







MADISON xTOOL Thermostat module with 3 valves - Brushed Dark Platinum

MADISON

ST 060 112 1360



- cover plate Ø 124 mm
- rosette Ø 55 mm
- temperature control handle with safety limit stop at 38°C
- thermostat cartridge
- 3x head part with cut-to-length spindle and sleeve

	Brushed Dark Platinum	ST 060 112 1360-99
	Chrome	ST 060 112 1360-00
	Brushed Platinum	ST 060 112 1360-06
	Platinum	ST 060 112 1360-08
	Durabass (23kt Gold)	ST 060 112 1360-09
	Brushed Durabass (23kt Gold)	ST 060 112 1360-28

Individual components of this set

You need the following components for this set

1x 36 503 977-99



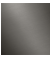





3x 36 607 361-99



ST 060 112 1360



- cover plate Ø 124 mm
- temperature control handle with safety limit stop at 38°C
- thermostat cartridge
- WRAS 2011026

	Brushed Dark Platinum	36 503 977-9
	Chrome	36 503 977-0
	Brushed Platinum	36 503 977-0
	Platinum	36 503 977-0
	Durabass (23kt Gold)	36 503 977-0
	Brushed Durabass (23kt Gold)	36 503 977-2

ST 060 112 1360

19
—
10
—
16
—
18
—
19
—
18
—

Required miscellaneous



xTOOL Concealed thermostat module without volume control -
•max. recess depth 110 mm
•min. recess depth 85 mm

35 503 970 90

Recommended miscellaneous



xGRID Attachment set for integrating in the dry wall construction -

12 340 970 90

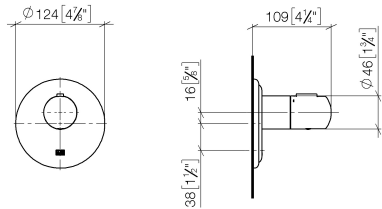
Required miscellaneous



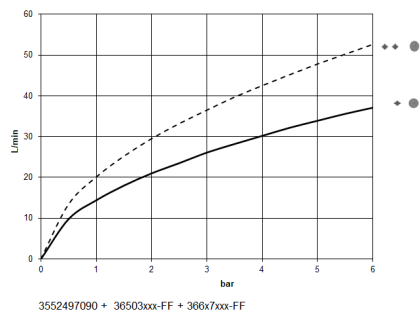
xGRID Installation track 555 mm - 12 360 970 90

ST 060 112 1360

mm [inches]



Flow rate chart



Certificates

LGA_29

LGA_29

DVGW_DW-
6512DN0

WRAS_2011



ST 060 112 1360

Codes & Standards

DIN 4109	EN 1111	ISO 3822	Scottish Water Byelaws
UK Water Supply Regulations	Ü-Zeichen		

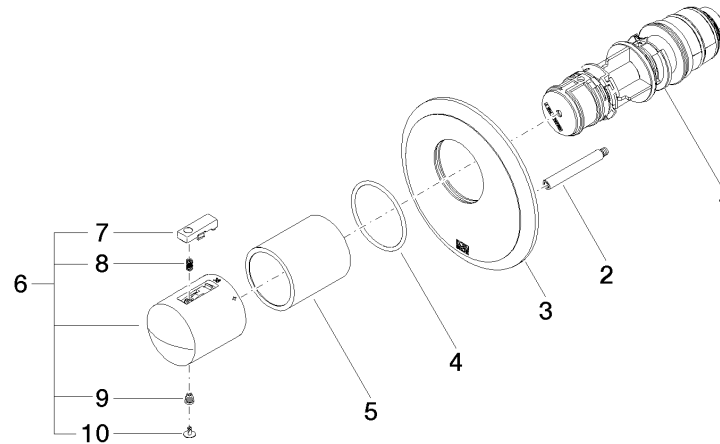
ST 060 112 1360

Product version up to 2/2/2021

Product version from 5/11/2021 to 11/25/2021

Product version from 1/1/2022

Product version from 6/30/2022 to 5/11/2021





MADISON xTOOL Thermostat module with 3 valves - Brushed Dark Platinum

MADISON

ST 060 112 1360

Spare parts list

- Product version up to 2/2/2021
- Product version from 5/11/2021 to 11/25/2021
- Product version from 1/1/2022


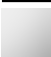
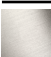



Product version from 6/30/2022 to 5/11/2021

No.	Item Number	Name	Quantity used	Delivery time
	90 15 02 063 00 90	cartridge	10	2

ST 060 112 1360




- rosette Ø 55 mm
- head part with cut-to-length spindle and sleeve
- 3x porcelain insert: HOT, COLD and NEUTRAL
- WRAS 2011026, 2010066

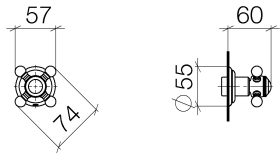
	Brushed Dark Platinum	36 607 361-9
	Chrome	36 607 361-0
	Brushed Platinum	36 607 361-0
	Platinum	36 607 361-0
	Durabrand (23kt Gold)	36 607 361-0
	Brushed Durabrand (23kt Gold)	36 607 361-2

ST 060 112 1360

19
—
10
—
16
—
18
—
19
—
18
—

Required miscellaneous

	Wall valve 1/2" - ●max. recess depth 145 mm ●min. recess depth 75 mm	35 607 970 90
---	---	---------------



Certificates

IAPMO_4976	DVGW_DW-6501DN0	WRAS_2010	LGA_29	LGA_29
DVGW_DW-6512DN0	WRAS_2011			

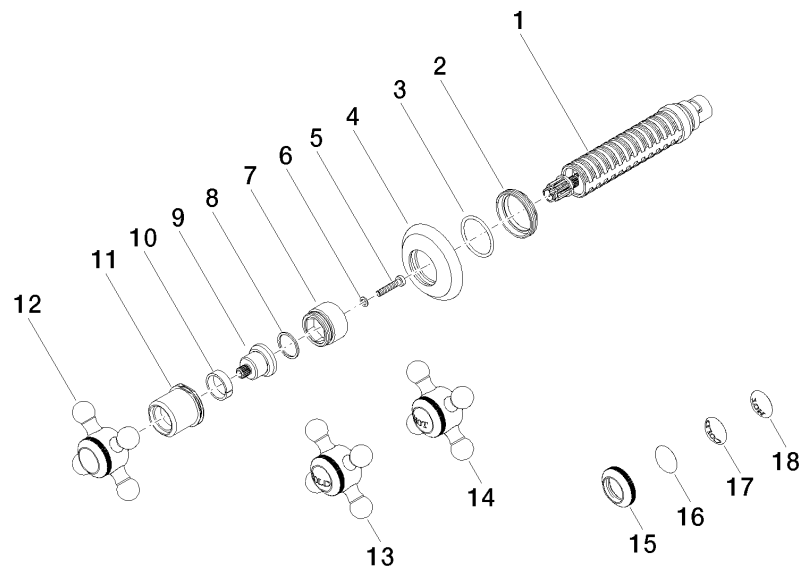


ST 060 112 1360

Codes & Standards

ASME A112.18.1	cUPC	DIN 4109	EN 1111
EN 200	ISO 3822	Scottish Water Byelaws	UK Water Supply Regulations

Ü-Zeichen





ST 060 112 1360

Spare parts list

No.	Item Number	Name	Quantity used	Delivery time
	90 90 03 143 00 90	top	18	2