

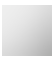


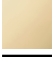



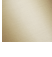


TARA Three-hole mixer with rinsing spray set - Brushed Chrome

TARA

ST 110 201 1892



- 235mm projection
- pivotable spout 360°
- air-enriched flow and spray flow
- height of mixer 370 mm
- height up to aerator 212 mm
- hole diameter spout 35 mm
- hole diameter valve 32 mm
- hole diameter rinsing spray 32mm
- fabric braided hose 1500 mm
- automatic spout/shower diverter
- sprayface with anti-scaling system
- max. flow 7 l/min at 3 bar flow pressure
- lead-free
- This product can help a building meet the requirements of Green Building Rating Systems, e.g. LEED®, BREEAM®, DGNB

Brushed Chrome	ST 110 201 1892-93
 Chrome	ST 110 201 1892-00
 Brushed Platinum	ST 110 201 1892-06
 Platinum	ST 110 201 1892-08
 Durabrand (23kt Gold)	ST 110 201 1892-09
 Dark Chrome	ST 110 201 1892-19
 Brushed Durabrand (23kt Gold)	ST 110 201 1892-28
 Matte Black	ST 110 201 1892-33
 Brushed Champagne (22kt Gold)	ST 110 201 1892-46
 Champagne (22kt Gold)	ST 110 201 1892-47
 Brushed Dark Platinum	ST 110 201 1892-99

Individual components of this set

You need the following components for this set



1x 20 815 892-93



1x 27 721 970-93

TARA Three-hole mixer with rinsing spray set - Brushed Chrome

TARA

ST 110 201 1892



- 235mm projection
- pivotable spout 360°
- air-enriched flow
- height of mixer 370 mm
- height up to aerator 212 mm
- hole diameter spout 35 mm
- hole diameter valve 32 mm
- max. flow 7 l/min at 3 bar flow pressure
- lead-free
- This product can help a building meet the requirements of Green Building Rating Systems, e.g. LEED®, BREEAM®, DGNB
- WRAS 2107052

Brushed Chrome		20 815 892-9
	Chrome	20 815 892-0
	Brushed Platinum	20 815 892-0
	Platinum	20 815 892-0
	Durabronze (23kt Gold)	20 815 892-0
	Dark Chrome	20 815 892-1
	Brushed Durabronze (23kt Gold)	20 815 892-2
	Matte Black	20 815 892-3
	Brushed Champagne (22kt Gold)	20 815 892-4
	Champagne (22kt Gold)	20 815 892-4
	Brushed Dark Platinum	20 815 892-9

ST 110 201 1892

3
—
0
—
6
—
8
—
9
—
9
—
8
—
3
—
6
—
7
—
9
—

Recommended miscellaneous

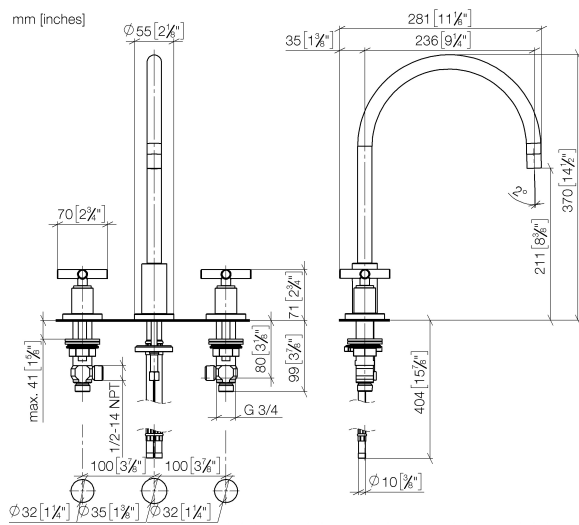
Strainer waste with control handle 10 710 970-93
- Brushed Chrome



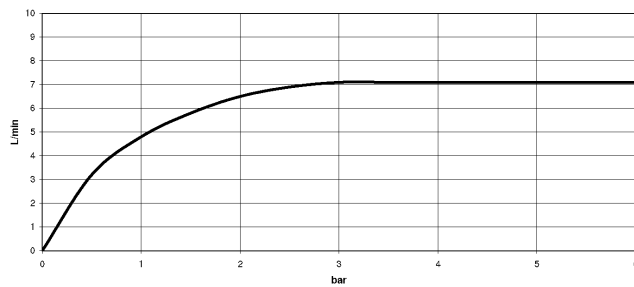
Recommended miscellaneous

Dispenser with rosette - Brushed 82 444 970-93
Chrome





Flow rate chart



Certificates

GDV_0400



TARA Three-hole mixer with rinsing spray set - Brushed Chrome

TARA

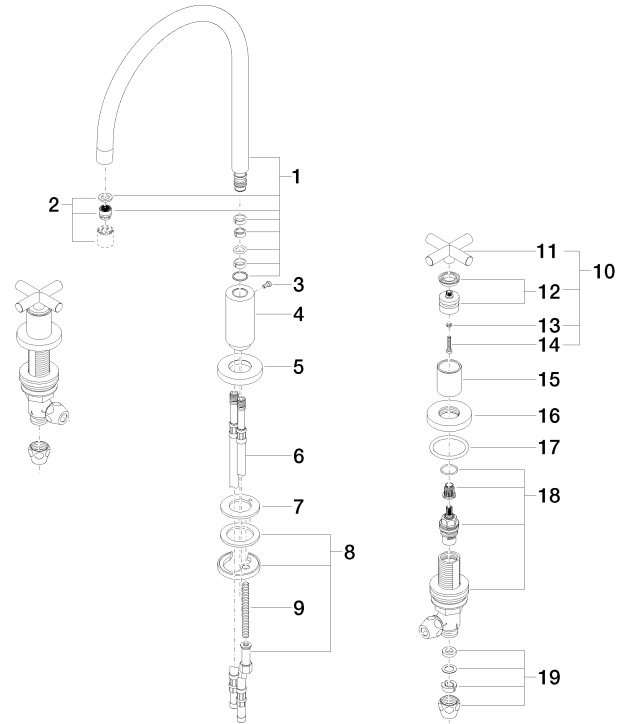
ST 110 201 1892

Codes & Standards

Executive Order
no. 1007

Product version from 6/30/2009

Parts for other
finishes can be found
here: [Chrome](#)



Spare parts list

Product version from 6/30/2009



Fits: ELIO, TARA, TARA ULTRA

- with round rosette
- spray flow
- automatic spout/shower diverter
- height of mixer 191 mm
- hole diameter rinsing spray 32mm
- fabric braided hose 1500 mm
- sprayface with anti-scaling system
- lead-free

Can only be combined with 33826790, 32800790, 33826888, 32815888, 20815892, 33826875.
Intrinsic protection against back flow.

Brushed Chrome	27 721 970-9
 Chrome	27 721 970-0
 Brushed Platinum	27 721 970-0
 Platinum	27 721 970-0
 Durabrand (23kt Gold)	27 721 970-0
 Dark Chrome	27 721 970-1
 Brushed Durabrand (23kt Gold)	27 721 970-2
 Matte Black	27 721 970-3
 Brushed Champagne (22kt Gold)	27 721 970-4
 Champagne (22kt Gold)	27 721 970-4
 Brushed Dark Platinum	27 721 970-9



TARA Three-hole mixer with rinsing spray set - Brushed Chrome

TARA

ST 110 201 1892

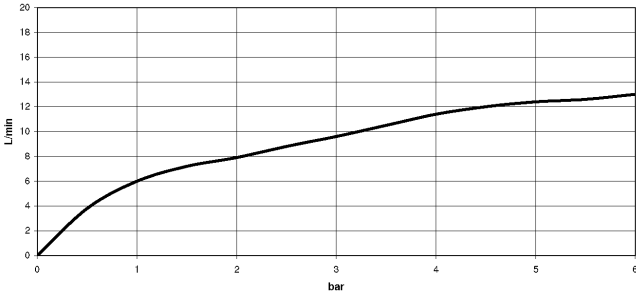
3
—
0
—
6
—
8
—
9
—
9
—
8
—
3
—
6
—
.7
—
9
—

ST 110 201 1892

mm [inches]



Flow rate chart



Certificates

LGA_29 IAPMO_N-4976 IAPMO_6 LGA_18



TARA Three-hole mixer with rinsing spray set - Brushed Chrome

TARA

ST 110 201 1892

Codes & Standards

DIN 4109

ISO 3822

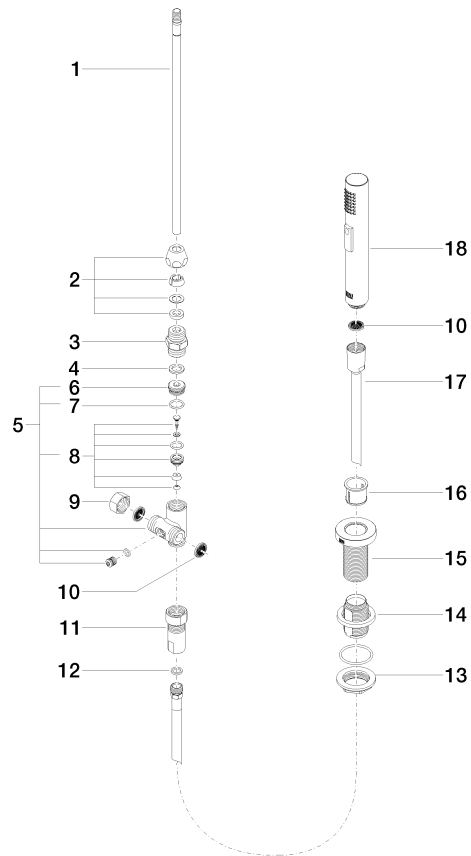
NSF372

NSF61

Ü-Zeichen

Product version from 10/27/2020

Parts for other
finishes can be found
here: [Chrome](#)





TARA Three-hole mixer with rinsing spray set - Brushed Chrome

TARA

ST 110 201 1892

Spare parts list

Product version from 10/27/2020

No.	Item Number	Name	Quantity used	Delivery time
	04 24 02 046 01-07	pipe	19	10