

**Rosette for tap hole cover - Dark Chrome**

IMO

12 730 970



- rosette Ø 52 mm

For combination with exposed trim parts 33800875-FF / 33805875-FF / 33816875-FF / 33818875-FF / 33826875-FF / 13700845-FF / 13700846-FF / 20713845-FF / 20713846-FF /

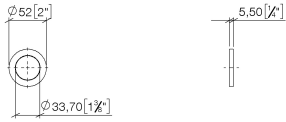
33500845-FF / 33506845-FF / 33521845-FF / 33526845-FF / 33526845-FF / 33500670-FF / 33521670-FF / 33537670-FF / 33600670-FF / 33800760-FF / 33800790-FF / 33826790-FF only.

Fits: IMO, LULU, MADISON, MEM, TARA, CL.1, LISSÉ, VAIA, META, CYO

|   |                                     |               |
|---|-------------------------------------|---------------|
|    | Dark Chrome                         | 12 730 970-19 |
|    | Chrome                              | 12 730 970-00 |
|    | Brushed Platinum                    | 12 730 970-06 |
|    | Platinum                            | 12 730 970-08 |
|    | Light Gold                          | 12 730 970-26 |
|    | Brushed Light Gold                  | 12 730 970-27 |
|    | Brushed Durabronze<br>(23kt Gold)   | 12 730 970-28 |
|    | Matte Black                         | 12 730 970-33 |
|    | Brushed Bronze                      | 12 730 970-42 |
|   | Brushed<br>Champagne (22kt<br>Gold) | 12 730 970-46 |
|  | Champagne (22kt<br>Gold)            | 12 730 970-47 |
|  | Brushed Chrome                      | 12 730 970-93 |
|  | Brushed Dark<br>Platinum            | 12 730 970-99 |

12 730 970

mm [inches]



12 730 970

Parts for other  
finishes can be found  
here: [Chrome](#)

