

WATER FALL Cascade spout for wall mounting - Chrome

SERIES-VARIOUS

13 420 979

Product version from 4/1/2023




- CASCADE, max. flow rate 26.5 l/min (at 3 bar)
- Function from: l/min

Technical data:


- cover plate 240 x 60 mm
- 120mm projection
- 1/2" connection
- plug-link mounting

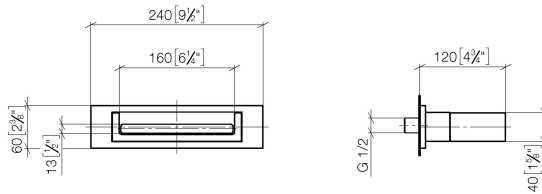
	Chrome	13 420 979-00
	Brushed Platinum	13 420 979-06
	Platinum	13 420 979-08
	Dark Chrome	13 420 979-19
	Light Gold	13 420 979-26
	Brushed Light Gold	13 420 979-27
	Brushed Durabronze (23kt Gold)	13 420 979-28
	Matte Black	13 420 979-33
	Brushed Dark Brass	13 420 979-39
	Brushed Bronze	13 420 979-42
	Brushed Champagne (22kt Gold)	13 420 979-46
	Champagne (22kt Gold)	13 420 979-47
	Brushed Chrome	13 420 979-93

Recommended miscellaneous

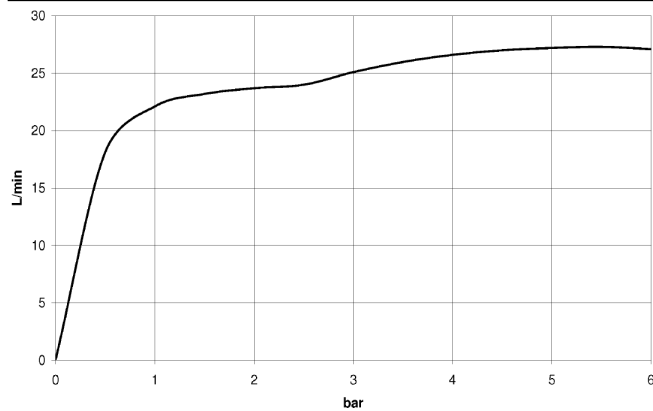
	Concealed wall elbow - •max. recess depth 163 mm •min. recess depth 90 mm	35 085 970 90
---	--	---------------

Recommended miscellaneous

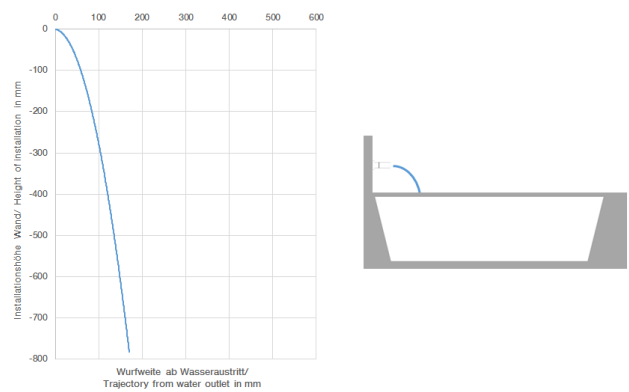
	Concealed wall elbow - •max. recess depth 163 mm •min. recess depth 90 mm	35 085 970 90
---	--	---------------



Flow rate chart



Trajectory diagram



Codes & Standards

ASME A112.18.1

cUPC

DIN 4109

ISO 3822

Scottish Water
Byelaws

UK Water Supply
Regulations

Ü-Zeichen



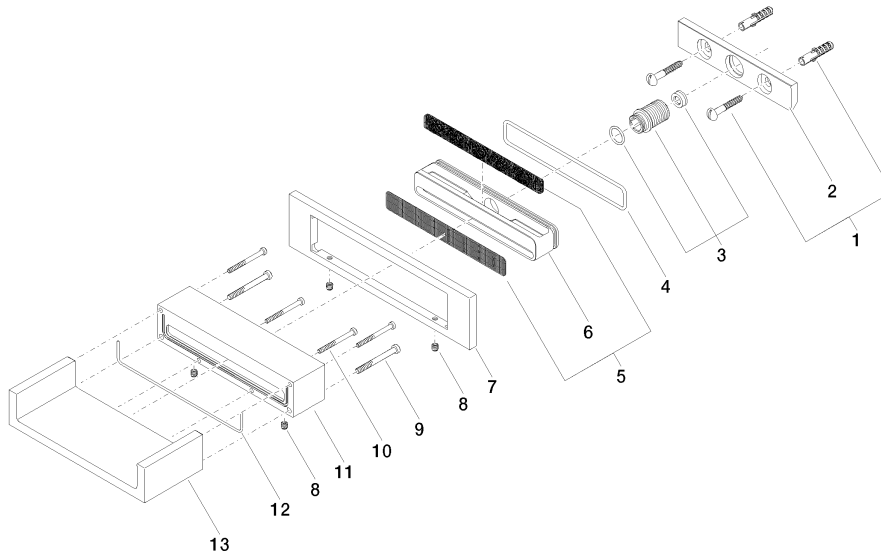
WATER FALL Cascade spout for wall mounting - Chrome

SERIES-VARIOUS

13 420 979 Product version from 4/1/2023

Certificates and sustainability

LGA_18	IAPMO_4976	WRAS_2111
--------	------------	-----------



Spare parts list

No.	Item Number	Name	Quantity used	Delivery time
	10 09 30 30 086 90	screw	4.00	2
	6 09 17 11 044 20 90	distributor	1.00	2
	5 90 29 30 040 00 90	insert	1.00	2
	4 09 14 10 504 90	seal	1.00	2
	3 90 24 05 008 00 90	nipple set	1.00	2
	2 09 17 97 056 90	holder	1.00	2
	8 09 31 11 049 90	pin	4.00	2
	13 09 11 94 046-00	spout	1.00	10
	9 09 30 30 147 90	screw	2.00	2
	1 04 30 31 024 01 90	fixing set	1.00	2
	12 09 14 03 504 90	seal	1.00	2
	7 09 27 97 034-00	rosette	1.00	10
	11 09 30 01 104-00	casing	1.00	10