

MEM Bath cascade spout without diverter for deck mounting - Chrome

MEM

13 630 740



- 235mm projection
- cascade
- height of mixer 100 mm
- height up to aerator 80 mm
- hole diameter 32 mm
- 1/2" connection
- max. flow 26.5 l/min at 3 bar flow pressure
- WRAS

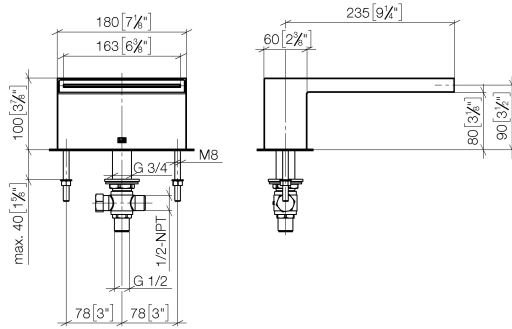
| | | |
|---|-------------------------------|---------------|
|  | Chrome | 13 630 740-00 |
|  | Brushed Platinum | 13 630 740-06 |
|  | Platinum | 13 630 740-08 |
|  | Dark Chrome | 13 630 740-19 |
|  | Brushed Durabrass (23kt Gold) | 13 630 740-28 |
|  | Brushed Champagne (22kt Gold) | 13 630 740-46 |
|  | Champagne (22kt Gold) | 13 630 740-47 |
|  | Brushed Dark Platinum | 13 630 740-99 |

MEM Bath cascade spout without diverter for deck mounting - Chrome

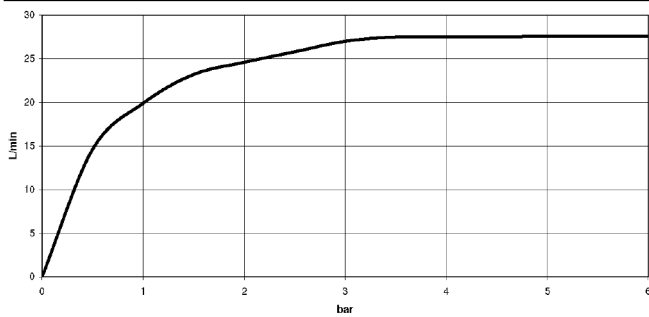
MEM

13 630 740

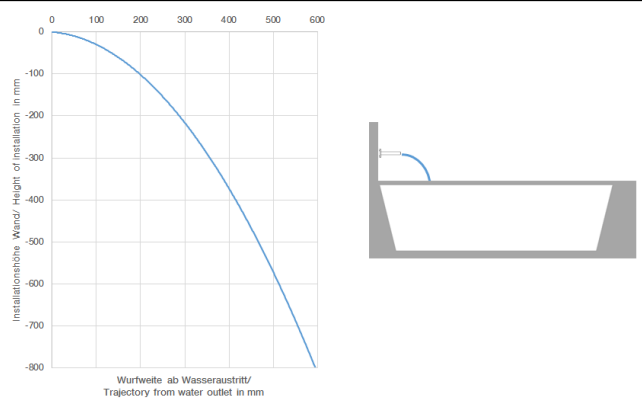
mm [inches]



Flow rate chart



Trajectory diagram



Codes & Standards

| | | | |
|------------------------|-----------------------------|-----------|----------|
| ASME A112.18.1 | cUPC | DIN 4109 | ISO 3822 |
| Scottish Water Byelaws | UK Water Supply Regulations | Ü-Zeichen | |



MEM Bath cascade spout without diverter for deck mounting - Chrome

MEM

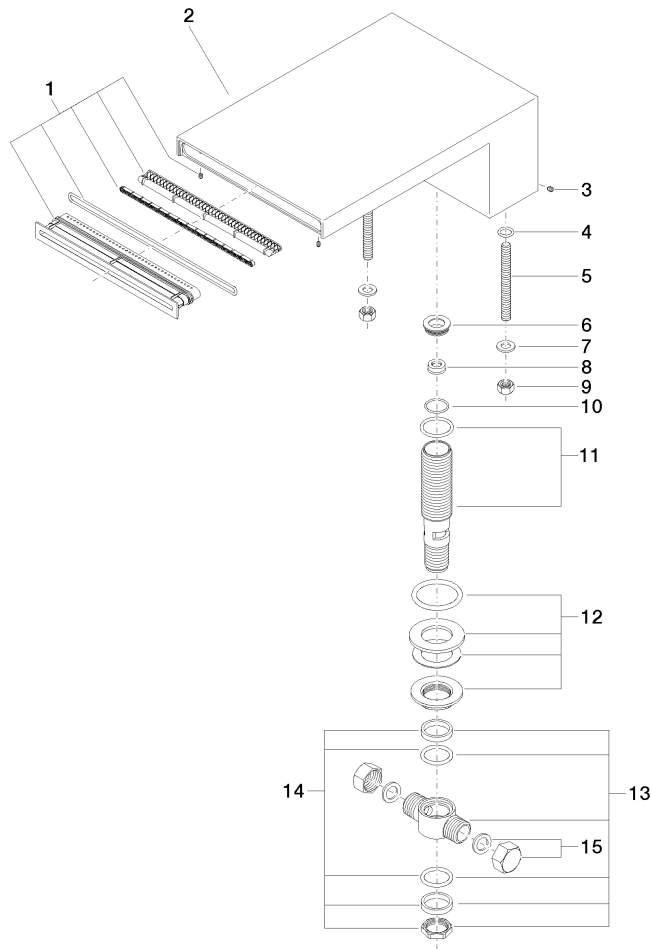
13 630 740

Certificates and sustainability

| | | |
|------------|--------|-------------|
| IAPMO_4976 | LGA_19 | WRAS_240502 |
|------------|--------|-------------|

13 630 740

Parts for other
finishes can be found
here: Brushed
Platinum



Spare parts list

| No. | Item Number | Name | Quantity used | Delivery time |
|-----|-----------------------|--------------|---------------|---------------|
| | 8 09 23 01 057 90 | flow reducer | 1.00 | 2 |
| | 7 09 30 11 045 90 | disc | 2.00 | 2 |
| | 6 09 24 04 246 20 90 | nipple | 1.00 | 2 |
| | 1 90 29 03 059 00 90 | insert | 1.00 | 2 |
| | 11 90 30 01 033 00 90 | base | 1.00 | 2 |
| | 4 09 14 10 008 90 | seal | 2.00 | 2 |
| | 2 09 11 74 040-00 | spout | 1.00 | 10 |
| | 9 09 23 10 023 90 | nut | 2.00 | 2 |
| | 5 09 31 11 011 90 | pin | 2.00 | 2 |
| | 3 09 31 11 044 90 | pin | 1.00 | 2 |
| | 12 04 23 10 004 04 90 | fixing set | 1.00 | 2 |
| | 14 90 23 10 012 00 90 | gasket kit | 1.00 | 2 |
| | 15 04 21 02 006 00 92 | cap | 2.00 | 2 |
| | 10 09 14 10 140 90 | seal | 1.00 | 2 |
| | 13 90 17 11 020 10 90 | distributor | 1.00 | 2 |