

**MEM Bath cascade spout without diverter for deck mounting - Dark Chrome** MEM

13 630 740

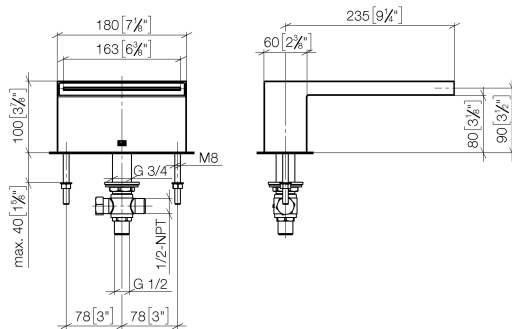


- 235mm projection
- cascade
- height of mixer 100 mm
- height up to aerator 80 mm
- hole diameter 32 mm
- 1/2" connection
- max. flow 26.5 l/min at 3 bar flow pressure
- WRAS

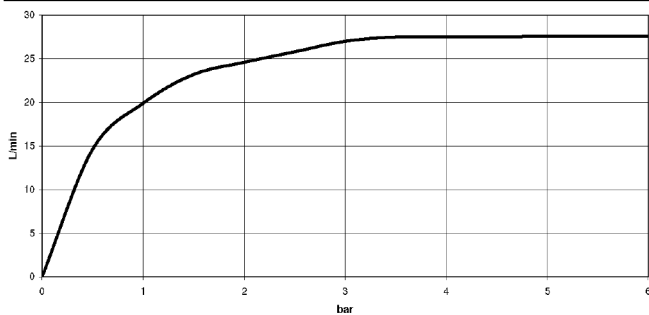
|   |                                     |               |
|---|-------------------------------------|---------------|
|  | Dark Chrome                         | 13 630 740-19 |
|  | Chrome                              | 13 630 740-00 |
|  | Brushed Platinum                    | 13 630 740-06 |
|  | Platinum                            | 13 630 740-08 |
|  | Brushed Durabronze<br>(23kt Gold)   | 13 630 740-28 |
|  | Brushed<br>Champagne (22kt<br>Gold) | 13 630 740-46 |
|  | Champagne (22kt<br>Gold)            | 13 630 740-47 |
|  | Brushed Dark<br>Platinum            | 13 630 740-99 |

13 630 740

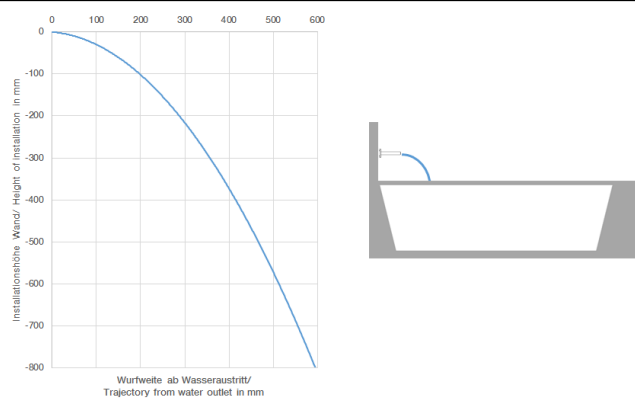
mm [inches]



**Flow rate chart**



**Trajectory diagram**



**Codes & Standards**

|                        |                             |           |          |
|------------------------|-----------------------------|-----------|----------|
| ASME A112.18.1         | cUPC                        | DIN 4109  | ISO 3822 |
| Scottish Water Byelaws | UK Water Supply Regulations | Ü-Zeichen |          |



MEM Bath cascade spout without diverter for deck mounting - Dark Chrome

MEM

13 630 740

Certificates and sustainability

IAPMO\_4976

LGA\_19

WRAS\_240502

13 630 740

Parts for other  
finishes can be found  
here: [Chrome](#)

