

Wall-mounted basin spout without pop-up waste - Dark Chrome

SERIES SPECIFIC

13 800 882



- 190mm projection
- fixed spout
- circular, air-enriched flow
- hole diameter 40 mm
- rosette Ø 60 mm
- 1/2" connection
- plug-link mounting
- max. flow 7 l/min
- lead-free
- This product can help a building meet the requirements of Green Building Rating Systems, e.g. LEED®, BREEAM®, DGNB
- WRAS

For Touchfree control please order eSet Touchfree with temperature adjustment

	Dark Chrome	13 800 882-19
	Chrome	13 800 882-00
	Brushed Durabrass (23kt Gold)	13 800 882-28
	Brushed Bronze	13 800 882-42
	Brushed Champagne (22kt Gold)	13 800 882-46
	Champagne (22kt Gold)	13 800 882-47
	Brushed Chrome	13 800 882-93
	Brushed Dark Platinum	13 800 882-99

Recommended miscellaneous



- Concealed wall elbow -

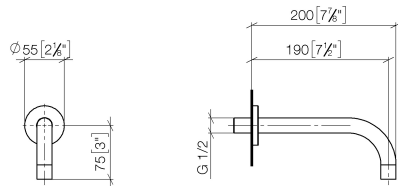
•max. recess depth 163 mm

•min. recess depth 90 mm

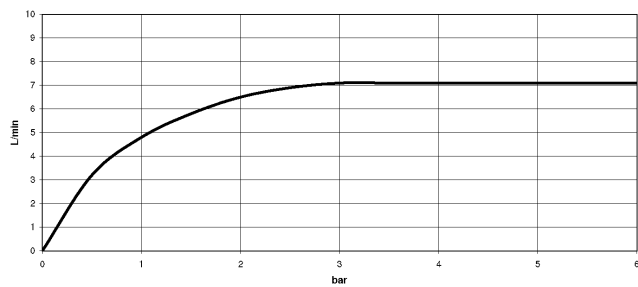
35 085 970 90

13 800 882

mm [inches]



Flow rate chart



Codes & Standards

DIN 4109

ISO 3822

Scottish Water
Byelaws

UK Water Supply
Regulations

Ü-Zeichen



Wall-mounted basin spout without pop-up waste - Dark Chrome

SERIES SPECIFIC

13 800 882

Certificates and sustainability

LGA_29

WRAS_240602

