





Wall-mounted basin spout without pop-up waste - Brushed Champagne (22kt Gold) SERIES SPECIFIC

13 800 882 Product version from 3/13/2017



- 190mm projection
- fixed spout
- circular, air-enriched flow
- hole diameter 40 mm
- rosette Ø 60 mm
- 1/2" connection
- plug-link mounting
- max. flow 7 l/min
- lead-free
- This product can help a building meet the requirements of Green Building Rating Systems, e.g. LEED®, BREEAM®, DGNB
- WRAS

For Touchfree control please order eSet Touchfree with temperature adjustment

| | | |
|-----------------------------------------------------------------------------------|--------------------------------|---------------|
|  | Brushed Champagne (22kt Gold) | 13 800 882-46 |
|  | Chrome | 13 800 882-00 |
|  | Dark Chrome | 13 800 882-19 |
|  | Brushed Durabronze (23kt Gold) | 13 800 882-28 |
|  | Brushed Bronze | 13 800 882-42 |
|  | Champagne (22kt Gold) | 13 800 882-47 |
|  | Brushed Chrome | 13 800 882-93 |
|  | Brushed Dark Platinum | 13 800 882-99 |

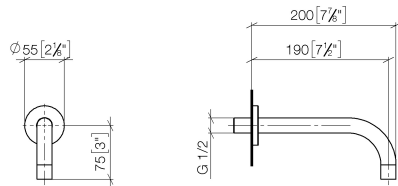
Recommended miscellaneous



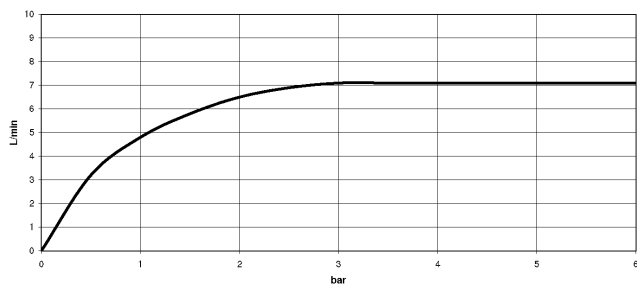
- Concealed wall elbow -** 35 085 970 90
- max. recess depth 163 mm
 - min. recess depth 90 mm

Wall-mounted basin spout without pop-up waste - Brushed Champagne (22kt Gold) SERIES SPECIFIC

13 800 882 Product version from 3/13/2017
mm [inches]



Flow rate chart



Codes & Standards

DIN 4109

ISO 3822

Scottish Water
Byelaws

UK Water Supply
Regulations

Ü-Zeichen



Wall-mounted basin spout without pop-up waste - Brushed Champagne (22kt Gold) SERIES SPECIFIC

13 800 882 Product version from 3/13/2017

Certificates and sustainability

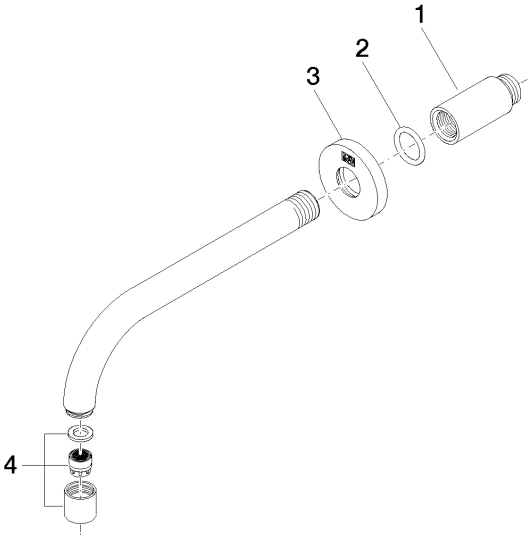
LGA_29

WRAS_240602

Wall-mounted basin spout without pop-up waste - Brushed Champagne (22kt Gold)

SERIES SPECIFIC

13 800 882
 Product version from 3/13/2017



Spare parts list

| No. | Item Number | Name | Quantity used | Delivery time |
|-----|--------------------|-----------|---------------|---------------|
| 4 | 90 23 01 019 00-46 | aerator | 1.00 | 30 |
| 1 | 09 24 03 081 10 90 | extension | 1.00 | 2 |
| 3 | 09 27 22 503-46 | rosette | 1.00 | 30 |
| 2 | 90 14 10 026 00 90 | seal | 1.00 | 2 |