

TARA Deck valve anti-clockwise closing - Platinum

TARA

20 000 883

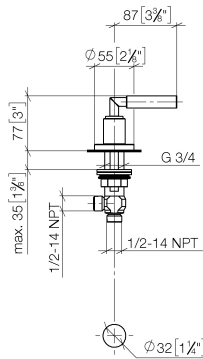


- hole diameter 32 mm
- rosette Ø 55 mm
- WRAS

	Platinum	20 000 883-08
	Dark Chrome	20 000 883-19
	Brushed Dark Brass	20 000 883-39
	Brushed Bronze	20 000 883-42
	Brushed Champagne (22kt Gold)	20 000 883-46
	Champagne (22kt Gold)	20 000 883-47

20 000 883

mm [inches]



Flow rate chart



Codes & Standards

ASME A112.18.1

cUPC

Scottish Water  
Byelaws

UK Water Supply  
Regulations



## TARA Deck valve anti-clockwise closing - Platinum

---

TARA

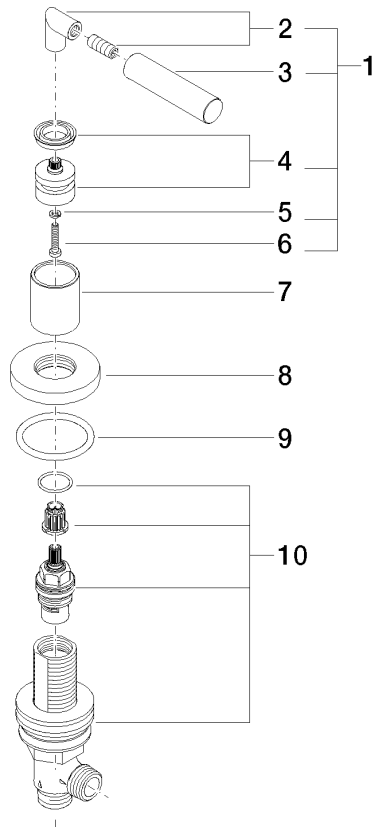
20 000 883

Certificates and sustainability

---

WRAS\_2112

IAPMO\_4976



## Spare parts list

No.	Item Number	Name	Quantity used	Delivery time
1	04 20 88 052 00-08	handle	1.00	40
8	09 27 89 105-08	rosette	1.00	40
2	04 18 20 022 00-08	angle	1.00	-
Spare part can no longer be ordered, please order the replacement item				
3	09 20 88 052-08	handle	1.00	40
4	90 12 12 007 00-08	base	1.00	40
10	90 17 11 040 30 90	side panel	1.00	2
7	09 21 02 140-08	sleeve	1.00	40
5	90 30 11 029 00 90	disc	1.00	2
6	90 30 30 075 00 90	screw	1.00	2
9	90 14 10 043 00 90	seal	1.00	2