
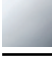
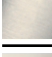





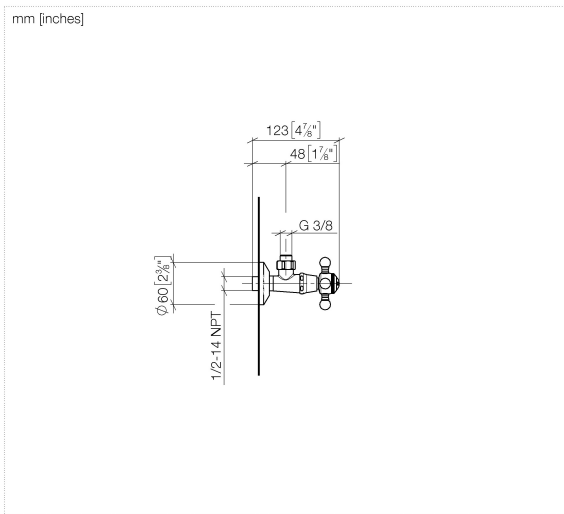
22 900 360

- rosette Ø 60 mm
- porcelain insert COLD

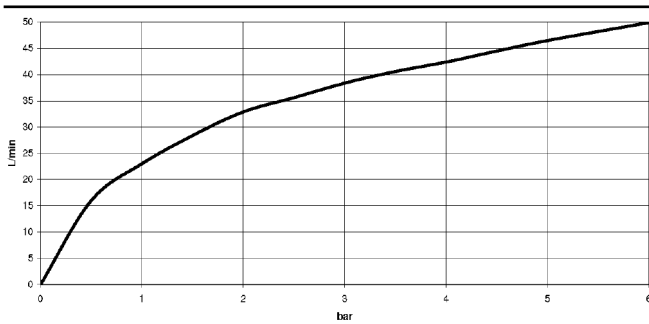


| | | |
|---|-------------------------------|---------------|
|  | Durabronz (23kt Gold) | 22 900 360-09 |
|  | Chrome | 22 900 360-00 |
|  | Brushed Platinum | 22 900 360-06 |
|  | Platinum | 22 900 360-08 |
|  | Brushed Durabronz (23kt Gold) | 22 900 360-28 |
|  | Brushed Dark Platinum | 22 900 360-99 |

22 900 360

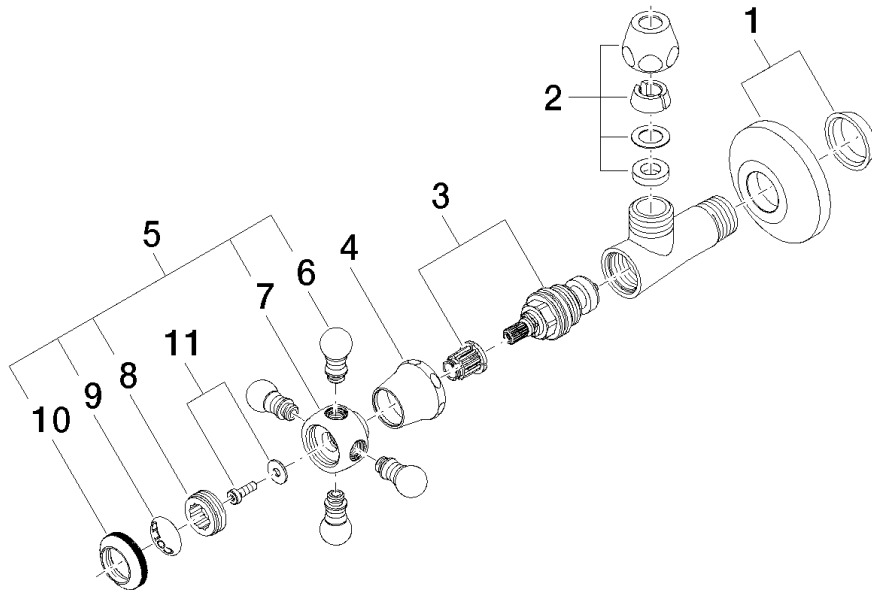


Flow rate chart



22 900 360

Parts for other finishes can be found here: [Chrome](#)



Spare parts list

| No. | Item Number | Name | Quantity used | Delivery time |
|-----|--------------------|--------------------|---------------|---------------|
| 1 | 04 27 01 003 00-09 | rosette | 1 | 40 |
| 2 | 90 23 30 040 00-09 | threaded connector | 1 | 40 |
| 3 | 90 90 03 023 01 90 | top | 1 | 2 |
| 4 | 09 21 02 055-09 | cover | 1 | 40 |
| 5 | 04 20 36 002 06-09 | handle (cold) | 1 | 40 |
| 6 | 09 20 36 004-09 | handle | 4 | 40 |
| 7 | 09 20 36 002-09 | handle | 1 | 40 |
| 8 | 09 20 83 006 90 | handle | 1 | 2 |
| 9 | 09 26 01 010 90 | accessories | 1 | 2 |
| 10 | 09 20 36 005-09 | handle | 1 | 40 |
| 11 | 04 30 30 029 00 90 | fixing set | 1 | 2 |