

## CYO Five-hole bath mixer for bath rim or tile edge installation - Brushed Platinum






CYO

27 523 811 Product version from 7/1/2023



- 167mm projection
- rectangular, air-enriched flow
- height of mixer 198 mm
- height up to aerator 133 mm
- Hand shower: COMPACT RAIN, max. flow rate 6.8 l/min (at 3 bar)
- complete hand shower set with anti-scale system
- hole diameter spout 32 mm
- hole diameter valve 32 mm
- rosette for complete hand shower set 60 x 60mm
- handle Ø 60mm
- metal shower hose 1750mm with integrated anti-twist protection
- max. flow 23.8 l/min at 3 bar flow pressure
- WRAS

NOTE: The handle inserts must be ordered separately from the fittings!

	Brushed Platinum	27 523 811-06
	Chrome	27 523 811-00
	Dark Chrome	27 523 811-19
	Brushed Durabrass (23kt Gold)	27 523 811-28
	Brushed Dark Platinum	27 523 811-99

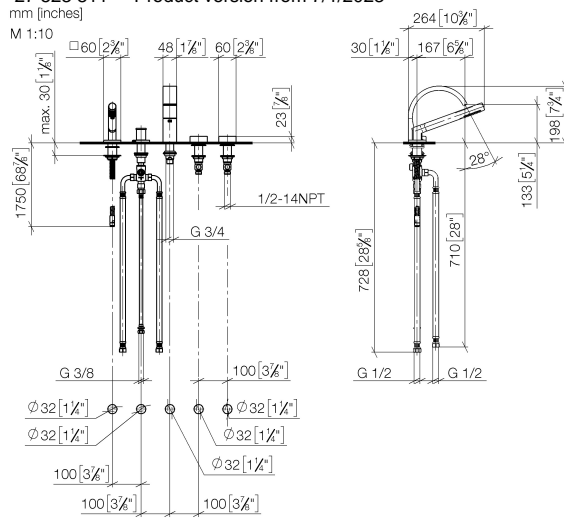
CYO Five-hole bath mixer for bath rim or tile edge installation - Brushed Platinum

CYO

27 523 811 Product version from 7/1/2023

mm [inches]

M 1:10



### Flow rate chart



## Codes & Standards

ASME A112.18.1	cUPC	DIN 4109	EN 1717
ISO 3822	Scottish Water Byelaws	UK Water Supply Regulations	Ü-Zeichen



CYO Five-hole bath mixer for bath rim or tile edge installation - Brushed Platinum

CYO

27 523 811    Product version from 7/1/2023

Certificates and sustainability

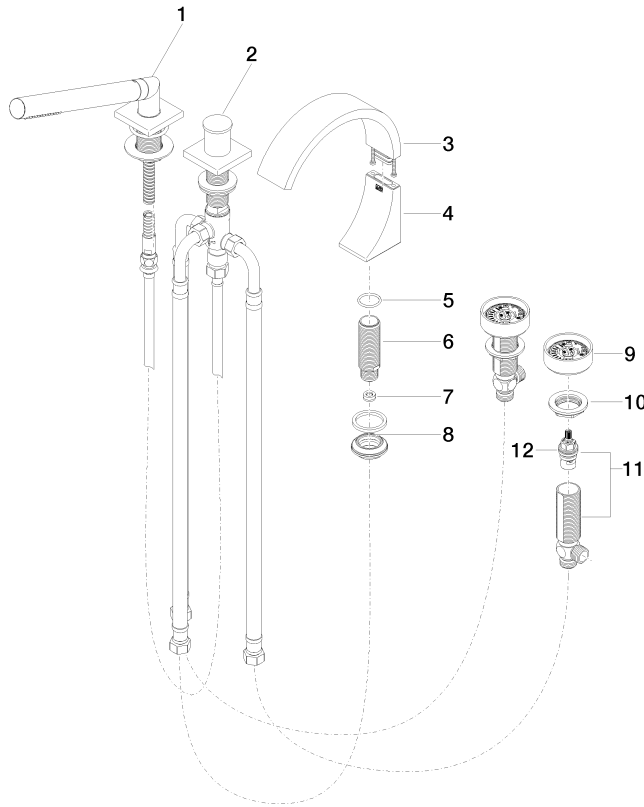
IAPMO_4976	WRAS_2204	LGA_38	Belgaqua_21-380-2
------------	-----------	--------	-------------------

## CYO Five-hole bath mixer for bath rim or tile edge installation - Brushed Platinum

CYO

27 523 811 Product version from 7/1/2023

Parts for other  
finishes can be found  
here: [Chrome](#)



### Spare parts list

No.	Item Number	Name	Quantity used	Delivery time
6	09 30 01 117 90	connection	1.00	2
1	27 702 980-06	Hand shower set for bath rim or tile edge installation - Brushed Platinum	1.00	10
2	29 140 670-06	Two-way diverter for bath rim or tile edge installation - Brushed Platinum	1.00	10
11	04 17 11 055 41 90	side panel	2.00	2
5	09 14 10 009 90	seal	1.00	2
12	90 90 03 239 00 90	top	2.00	2
10	04 30 11 038 68 90	fixing set	1.00	2
4	90 19 70 011 00-06	connection	1.00	10
9	90 18 40 291 01-06	handle	2.00	10
8	04 23 10 044 09 90	fixing set	1.00	2
3	90 11 70 013 00-06	spout	1.00	10
7	09 23 01 057 90	flow reducer	1.00	2