

MADISON Hand shower set for bath rim or tile edge installation - Durabronze (23kt Gold)

27 703 360 Product version from 5/15/2020



- spray head Ø 64mm
- normal flow
- with anti-scale system
- rosette Ø 55 mm
- hole diameter 32 mm
- metal shower hose 1750mm with integrated anti-twist protection
- max. flow 6.8 l/min
- WRAS

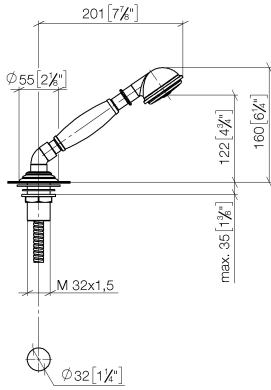
Two-piece design allows hose to later be changed without dismantling the fitting.

Intrinsic protection against back flow.

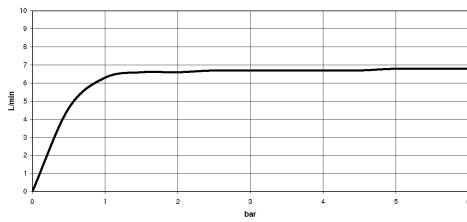


MADISON Hand shower set for bath rim or tile edge installation - Durabronze (23kt Gold)

27 703 360 Product version from 5/15/2020
mm [inches]



Flow rate chart



Codes & Standards

ASME A112.18.1

cUPC

EN 1717

Scottish Water
Byelaws

UK Water Supply
Regulations



MADISON Hand shower set for bath rim or tile edge installation - Durabrass (23kt Gold)

27 703 360 Product version from 5/15/2020

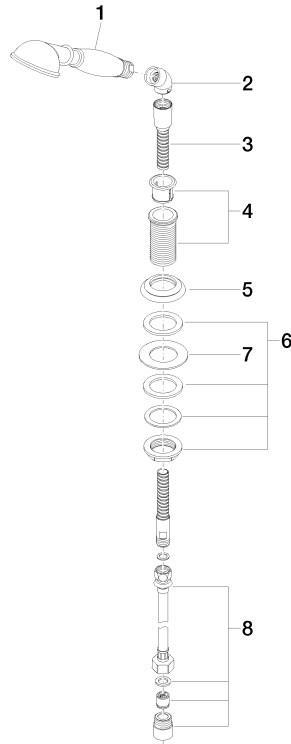
Certificates

IAPMO_4976

Belgaqua_21-383-2 WRAS_1809

**MADISON Hand shower set for bath rim or tile edge installation - Durabronz
(23kt Gold)**

27 703 360 Product version from 5/15/2020



Spare parts list

No.	Item Number	Name	Quantity used	Delivery time
1	28 002 970-09 0010	MADISON Metal hand shower with porcelain insert (white) FlowReduce - Durabronz (23kt Gold)	1	40
2	90 24 04 019 00-09	angle	1	40
3	28 322 970-09	Metal shower hose 1/2" x 3/8" x 1750 mm - Durabronz (23kt Gold)	1	40
4	04 24 04 018 00-09	sleeve	1	40
5	09 27 35 002-09	rosette	1	40
6	04 23 10 009 00 90	fixing set	1	2
7	09 30 11 060 90	disc	1	2
8	12 505 970 90	High pressure hose 1/2" x 3/8" x 500 mm -	1	2