

28 002 970



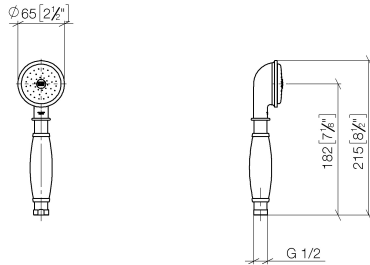
- COMPACT RAIN, max. flow rate 9 l/min (at 3 bar)
- Function from: 6 l/min
- spray head Ø 64mm
- 1/2" connection
- WRAS 240502026, 1809019

Intrinsic protection against back flow.

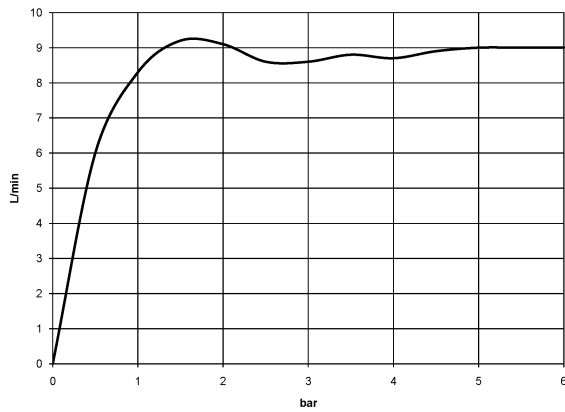
| | | |
|---|-------------------------------|--------------------|
|  | Brushed Chrome | 28 002 970-93 |
|  | Chrome | 28 002 970-00 |
|  | Chrome | 28 002 970-00 0010 |
|  | Gold (23.9kt) | 28 002 970-01 |
|  | Brushed Platinum | 28 002 970-06 |
|  | Brushed Platinum | 28 002 970-06 0010 |
|  | Platinum | 28 002 970-08 |
|  | Platinum | 28 002 970-08 0010 |
|  | Durabrand (23kt Gold) | 28 002 970-09 |
|  | Durabrand (23kt Gold) | 28 002 970-09 0010 |
|  | Brushed Durabrand (23kt Gold) | 28 002 970-28 |
|  | Brushed Durabrand (23kt Gold) | 28 002 970-28 0010 |
|  | Brushed Chrome | 28 002 970-93 0010 |
|  | Brushed Dark Platinum | 28 002 970-99 |
|  | Brushed Dark Platinum | 28 002 970-99 0010 |

28 002 970

mm [inches]



Flow rate chart



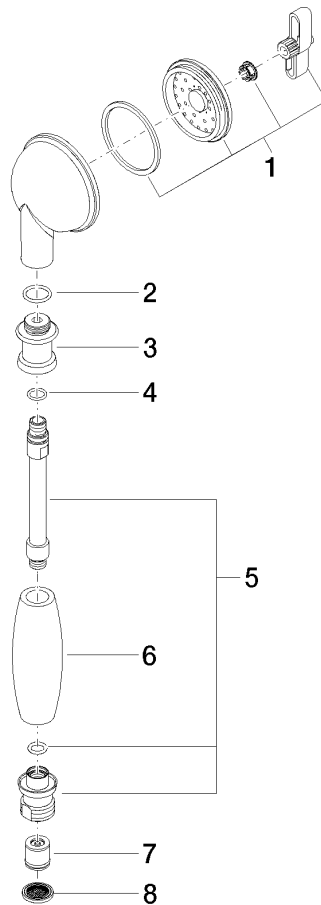
Certificates

LGA_8492.

WRAS_240502026.

28 002 970

Parts for other finishes can be found here: [Chrome](#)



Spare parts list

| No. | Item Number | Name | Quantity used | Delivery time |
|-----|--------------------|--------------|---------------|---------------|
| 1 | 90 12 01 010 00 90 | set | 1 | 2 |
| 2 | 09 14 10 069 90 | seal | 1 | 2 |
| 3 | 09 24 04 059 20-93 | nipple | 1 | 20 |
| 4 | 09 14 10 042 90 | seal | 1 | 2 |
| 5 | 90 28 22 033 00-93 | insert | 1 | 20 |
| 6 | 11 167 820 60 | handle | 1 | 2 |
| 7 | 09 23 01 077 90 | flow reducer | 1 | 2 |
| 8 | 09 23 01 039 90 | sieve | 1 | 2 |