

## Rain shower with wall fixing 220 mm - Brushed Platinum














TARA

28 649 970



- 450mm projection
- rain shower Ø 220 mm
- PURE RAIN, max. flow rate 14 l/min (at 3 bar)
- Function from: 7 l/min
- rosette Ø 60 mm
- 1/2" connection
- with anti-scale system
- quick clearing
- WRAS 1707033

Fits: TARA, LISSÉ, VAIA, META

|                                                                                     |                                     |               |
|-------------------------------------------------------------------------------------|-------------------------------------|---------------|
|    | Brushed Platinum                    | 28 649 970-06 |
|    | Chrome                              | 28 649 970-00 |
|    | Platinum                            | 28 649 970-08 |
|    | Dark Chrome                         | 28 649 970-19 |
|    | Light Gold                          | 28 649 970-26 |
|    | Brushed Light Gold                  | 28 649 970-27 |
|    | Brushed Durabrass<br>(23kt Gold)    | 28 649 970-28 |
|    | Matte Black                         | 28 649 970-33 |
|    | Brushed Bronze                      | 28 649 970-42 |
|  | Brushed<br>Champagne (22kt<br>Gold) | 28 649 970-46 |
|  | Champagne (22kt<br>Gold)            | 28 649 970-47 |
|  | Brushed Chrome                      | 28 649 970-93 |
|  | Brushed Dark<br>Platinum            | 28 649 970-99 |

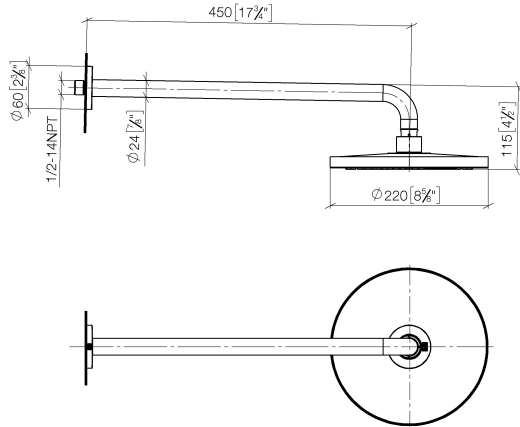
### Recommended miscellaneous



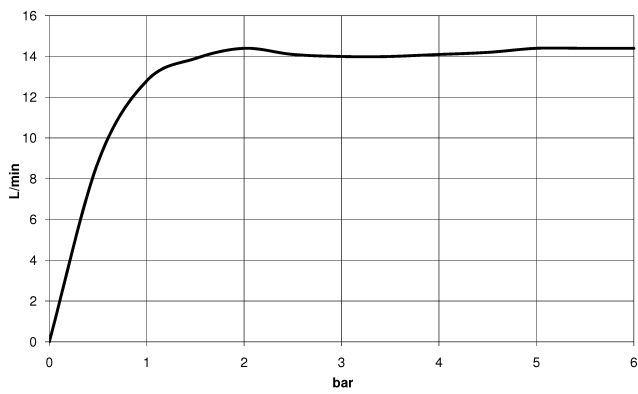
- Concealed wall elbow -** 35 085 970 90
- max. recess depth 163 mm
  - min. recess depth 90 mm

28 649 970

mm [inches]



Flow rate chart



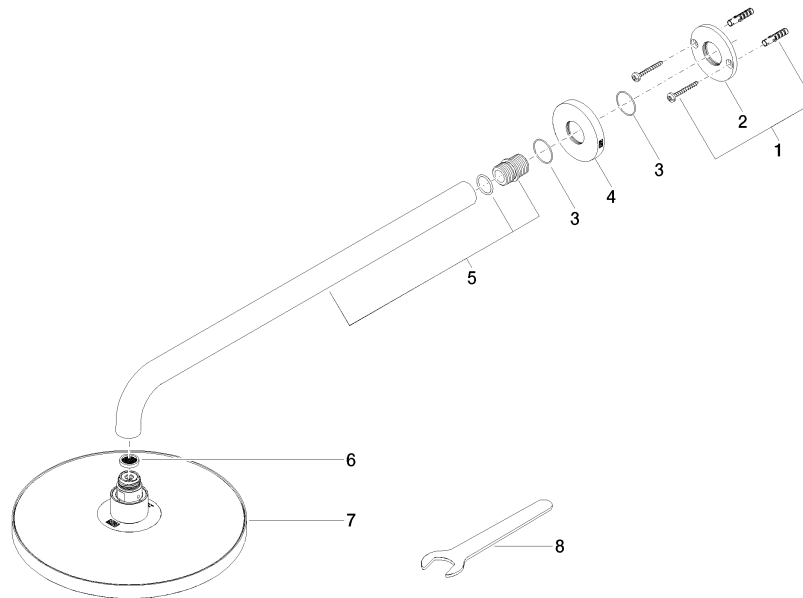
Certificates

WRAS\_2212012.

DVGW\_DW-  
6517DN0118.

LGA\_38655.

28 649 970



### Spare parts list

| No. | Item Number        | Name       | Quantity used | Delivery time |
|-----|--------------------|------------|---------------|---------------|
| 1   | 04 30 31 032 00 90 | fixing set | 1             | 2             |
| 2   | 09 17 20 120 90    | holder     | 1             | 2             |
| 3   | 09 14 10 150 90    | seal       | 2             | 2             |
| 4   | 09 27 97 015-06    | rosette    | 1             | 10            |
| 5   | 90 11 03 070 00-06 | pipe       | 1             | 10            |
| 6   | 09 23 01 075 90    | insert     | 1             | 2             |
| 7   | 04 12 05 092 00-06 | shower     | 1             | 10            |
| 8   | 90 30 09 069 00 90 | key        | 1             | 2             |