

Two-way diverter for bath rim or tile edge installation - Brushed Platinum

SERIES SPECIFIC

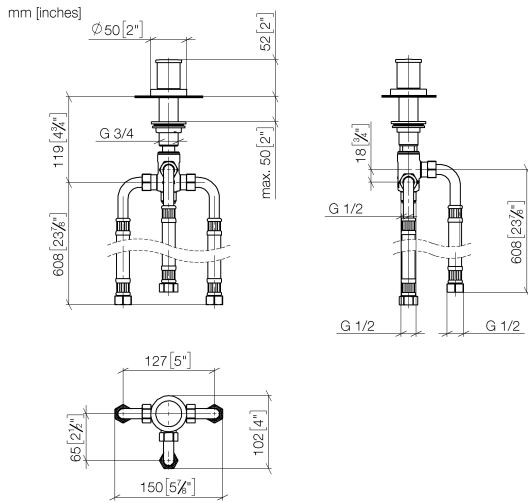
29 140 979 Product version from 6/30/2015



- automatic bath/shower diverter
- hole diameter 32 mm
- rosette Ø 50 mm
- 1/2" connection
- max. flow 64.9 l/min at 3 bar flow pressure
- WRAS

| | | |
|---|-------------------------------------|---------------|
|  | Brushed Platinum | 29 140 979-06 |
|  | Chrome | 29 140 979-00 |
|  | Platinum | 29 140 979-08 |
|  | Dark Chrome | 29 140 979-19 |
|  | Brushed Durabrass (23kt Gold) | 29 140 979-28 |
|  | Matte Black | 29 140 979-33 |
|  | Brushed Dark Brass | 29 140 979-39 |
|  | Brushed Bronze | 29 140 979-42 |
|  | Brushed Champagne (22kt Gold) | 29 140 979-46 |
|  | Champagne (22kt Gold) | 29 140 979-47 |
|  | Brushed Chrome | 29 140 979-93 |
|  | Brushed Dark Platinum | 29 140 979-99 |

29 140 979 Product version from 6/30/2015



Flow rate chart



Codes & Standards

DIN 4109

ISO 3822

Scottish Water
Byelaws

UK Water Supply
Regulations

Ü-Zeichen



Two-way diverter for bath rim or tile edge installation - Brushed Platinum

SERIES SPECIFIC

29 140 979 Product version from 6/30/2015

Certificates and sustainability

WRAS_1911

LGA_29

Two-way diverter for bath rim or tile edge installation - Brushed Platinum

SERIES SPECIFIC

29 140 979 Product version from 6/30/2015

Parts for other
finishes can be found
here: [Chrome](#)



Spare parts list

| No. | Item Number | Name | Quantity used | Delivery time |
|-----|--------------------|----------|---------------|---------------|
| 9 | 09 23 10 004 90 | nut | 1.00 | 2 |
| 7 | 09 14 05 014 90 | seal | 1.00 | 2 |
| 4 | 09 16 01 012-06 | ring | 1.00 | 10 |
| 3 | 09 20 71 002-06 | handle | 1.00 | 10 |
| 2 | 90 30 30 014 00 90 | screw | 1.00 | 2 |
| 1 | 09 20 71 003-06 | handle | 1.00 | 10 |
| 8 | 09 14 40 002 90 | seal | 1.00 | 2 |
| 10 | 90 17 09 051 00 90 | diverter | 1.00 | 2 |
| 5 | 09 27 97 013-06 | rosette | 1.00 | 10 |
| 6 | 09 14 10 030 90 | seal | 1.00 | 2 |