

CYO Two-hole basin mixer without pop-up waste - Durabron / Brushed Durabron (23kt Gold)






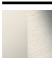
CYO

29 217 811



- 133mm projection
- fixed spout
- rectangular, air-enriched flow
- height of mixer 180 mm
- height up to aerator 128 mm
- hole diameter spout 35 mm
- hole diameter valve 32 mm
- handle Ø 60mm
- 2x screw-in M 8 x 1 pressure hose, leak-tested
- 1x screw-in M 10 x 1 pressure hose, leak-tested
- max. flow 4.5 l/min
- progressive cartridge
- lead-free
- This product can help a building meet the requirements of Green Building Rating Systems, e.g. LEED®, BREEAM®, DGNB
- WRAS

NOTE: The handle inserts must be ordered separately from the fittings!

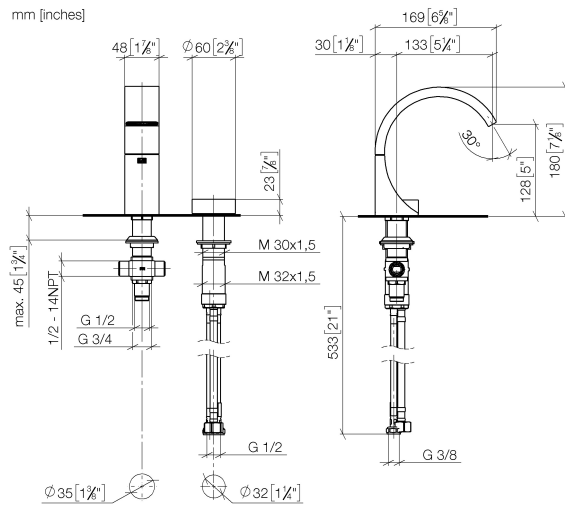
| | | |
|---|--|---------------|
|  | Durabron / Brushed Durabron (23kt Gold) | 29 217 811-38 |
|  | Chrome | 29 217 811-00 |
|  | Brushed Platinum | 29 217 811-06 |
|  | Dark Chrome | 29 217 811-19 |
|  | Brushed Durabron (23kt Gold) | 29 217 811-28 |
|  | Platinum / Brushed Platinum | 29 217 811-36 |
|  | Brushed Dark Platinum | 29 217 811-99 |

CYO Two-hole basin mixer without pop-up waste - Durabron / Brushed Durabron (23kt Gold)

CYO

29 217 811

mm [inches]



Flow rate chart



Codes & Standards

DIN 4109

ISO 3822

Scottish Water
Byelaws

UK Water Supply
Regulations

Ü-Zeichen



CYO Two-hole basin mixer without pop-up waste - Durabrass / Brushed
Durabrass (23kt Gold)

CYO

29 217 811

Certificates and sustainability

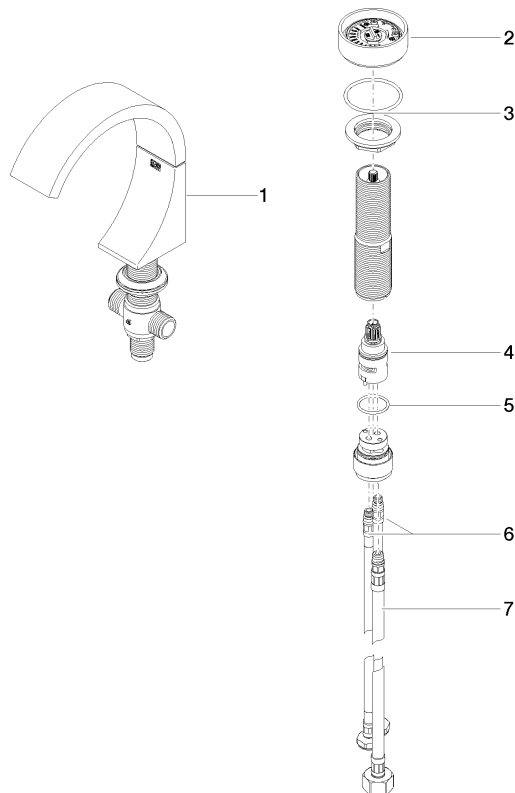
WRAS_2201

LGA_38

CYO Two-hole basin mixer without pop-up waste - Durabron / Brushed Durabron (23kt Gold)

CYO

29 217 811
Parts for other
finishes can be found
here: Chrome



Spare parts list

| No. | Item Number | Name | Quantity used | Delivery time |
|-----|--------------------|--|---------------|---------------|
| 5 | 09 14 10 112 90 | seal | 1.00 | 2 |
| 1 | 13 715 811-38 | CYO Deck-mounted basin spout without pop-up waste - Durabron / Brushed Durabron (23kt Gold) | 1.00 | 20 |
| 2 | 90 18 40 290 00-38 | handle | 1.00 | 20 |
| 6 | 04 30 04 100 00 90 | hose | 2.00 | 2 |
| 4 | 90 90 03 169 00 90 | top | 1.00 | 2 |
| 3 | 04 30 11 038 67 90 | fixing set | 1.00 | 2 |
| 7 | 04 30 04 019 00 90 | hose | 1.00 | 2 |