

CYO Two-hole basin mixer without pop-up waste - Brushed Platinum








CYO

29 218 811

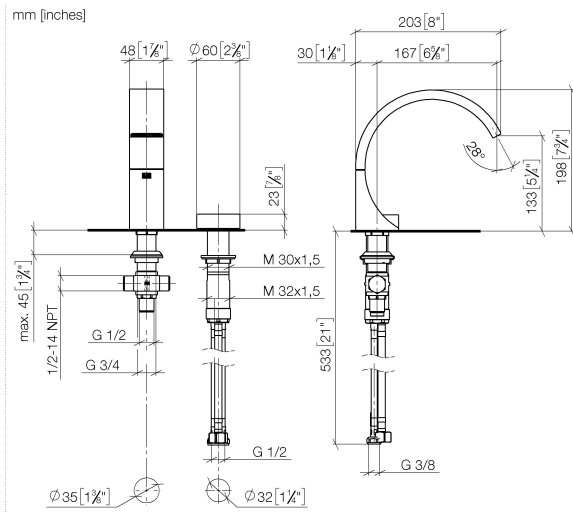


- 167mm projection
- fixed spout
- rectangular, air-enriched flow
- height of mixer 198 mm
- height up to aerator 133 mm
- hole diameter spout 35 mm
- hole diameter valve 32 mm
- handle Ø 60mm
- 2x screw-in M 8 x 1 pressure hose, leak-tested
- 1x screw-in M 10 x 1 pressure hose, leak-tested
- max. flow 4.5 l/min
- progressive cartridge
- lead-free
- This product can help a building meet the requirements of Green Building Rating Systems, e.g. LEED®, BREEAM®, DGNB
- WRAS

NOTE: The handle inserts must be ordered separately from the fittings!

| | | |
|---|---|---------------|
|  | Brushed Platinum | 29 218 811-06 |
|  | Chrome | 29 218 811-00 |
|  | Dark Chrome | 29 218 811-19 |
|  | Brushed Durabronze (23kt Gold) | 29 218 811-28 |
|  | Platinum / Brushed Platinum | 29 218 811-36 |
|  | Durabronze / Brushed Durabronze (23kt Gold) | 29 218 811-38 |
|  | Brushed Dark Platinum | 29 218 811-99 |

29 218 811



Flow rate chart



Codes & Standards

DIN 4109

ISO 3822

Scottish Water
Byelaws

UK Water Supply
Regulations

Ü-Zeichen



CYO Two-hole basin mixer without pop-up waste - Brushed Platinum

CYO

29 218 811

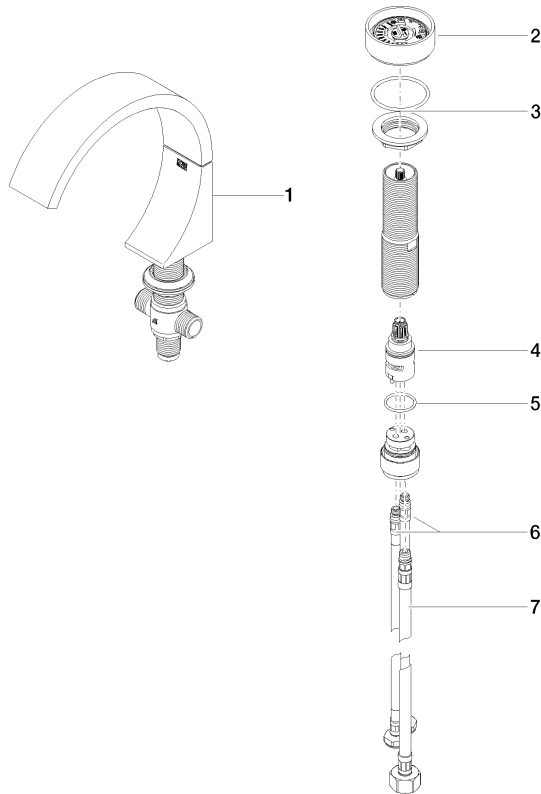
Certificates and sustainability

WRAS_2201

LGA_38

29 218 811

Parts for other
finishes can be found
here: [Chrome](#)



Spare parts list

| No. | Item Number | Name | Quantity used | Delivery time |
|-----|--------------------|---|---------------|---------------|
| 3 | 04 30 11 038 67 90 | fixing set | 1.00 | 2 |
| 6 | 04 30 04 100 00 90 | hose | 2.00 | 2 |
| 5 | 09 14 10 112 90 | seal | 1.00 | 2 |
| 4 | 90 90 03 169 00 90 | top | 1.00 | 2 |
| 1 | 13 717 811-06 | CYO Deck-mounted basin spout without pop-up waste - Brushed Platinum | 1.00 | 10 |
| 7 | 04 30 04 019 00 90 | hose | 1.00 | 2 |
| 2 | 90 18 40 290 00-06 | handle | 1.00 | 10 |