

**CYO Two-hole basin mixer without pop-up waste - Durabronss / Brushed  
Durabronss (23kt Gold)**



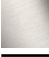




CYO

29 218 811



- 167mm projection
- fixed spout
- rectangular, air-enriched flow
- height of mixer 198 mm
- height up to aerator 133 mm
- hole diameter spout 35 mm
- hole diameter valve 32 mm
- handle Ø 60mm
- 2x screw-in M 8 x 1 pressure hose, leak-tested
- 1x screw-in M 10 x 1 pressure hose, leak-tested
- max. flow 4.5 l/min
- progressive cartridge
- lead-free
- This product can help a building meet the requirements of Green Building Rating Systems, e.g. LEED®, BREEAM®, DGNB
- WRAS 2201012

NOTE: The handle inserts must be ordered separately from the fittings!

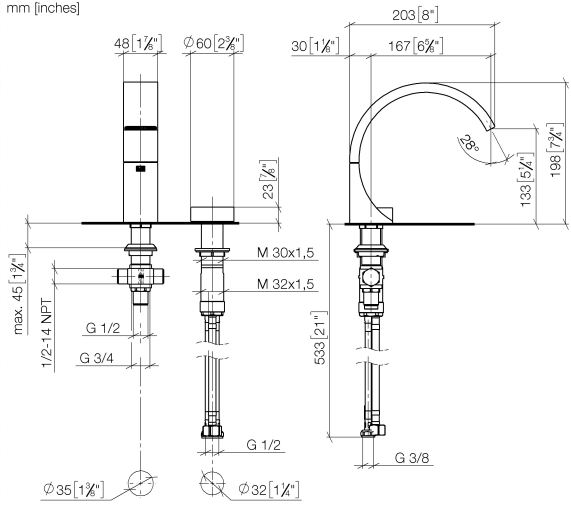
	Durabronss / Brushed Durabronss (23kt Gold)	29 218 811-38
	Chrome	29 218 811-00
	Brushed Platinum	29 218 811-06
	Dark Chrome	29 218 811-19
	Brushed Durabronss (23kt Gold)	29 218 811-28
	Platinum / Brushed Platinum	29 218 811-36
	Brushed Dark Platinum	29 218 811-99

**CYO Two-hole basin mixer without pop-up waste - Durabronz / Brushed  
Durabronz (23kt Gold)**

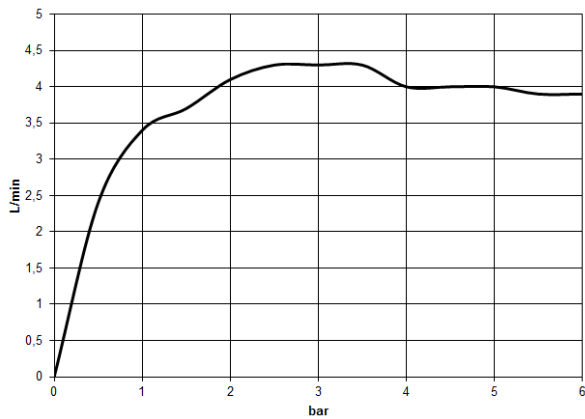
CYO

29 218 811

mm [inches]



**Flow rate chart**



**Codes & Standards**

DIN 4109

ISO 3822

Scottish Water  
Byelaws

UK Water Supply  
Regulations

**Ü-Zeichen**



CYO Two-hole basin mixer without pop-up waste - Durabron / Brushed  
Durabron (23kt Gold)

---

CYO

29 218 811  
Certificates

---

LGA\_38

WRAS\_2201

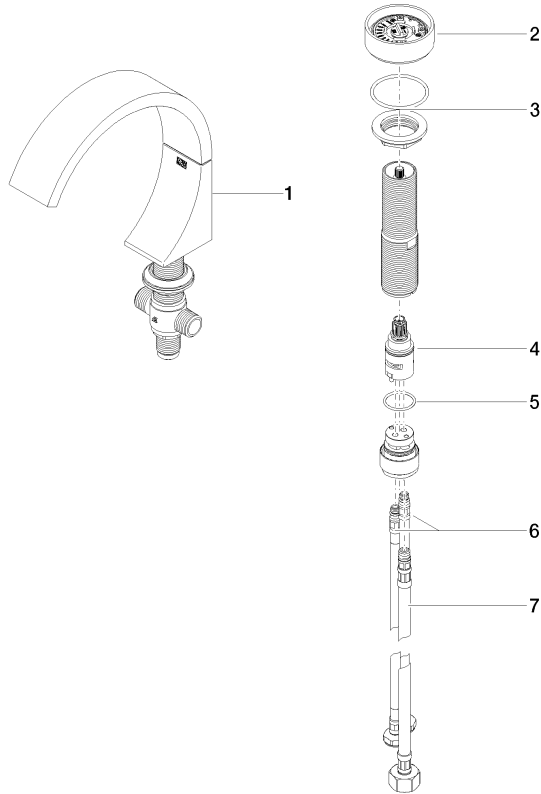


# CYO Two-hole basin mixer without pop-up waste - Durabronz / Brushed Durabronz (23kt Gold)

CYO

29 218 811

Parts for other finishes can be found here: [Chrome](#)





CYO Two-hole basin mixer without pop-up waste - Durabronss / Brushed  
Durabronss (23kt Gold)

CYO

29 218 811

**Spare parts list**

No.	Item Number	Name	Quantity used	Delivery time
	13 717 811-38	CYO Deck-mounted basin spout without pop-up waste - Durabronss / Brushed Durabronss (23kt Gold)	8	20