

VAIA Single-lever basin mixer with raised base without pop-up waste - Champagne (22kt Gold)

VAIA

33 534 809 Product version from 3/13/2017



- 201mm projection
- pivotable spout 360°
- circular, air-enriched flow
- height of mixer 414 mm
- height up to aerator 316 mm
- hole diameter 35 mm
- max. flow 5.7 l/min
- 2x screw-in M 8 x 1 pressure hose, leak-tested
- This product can help a building meet the requirements of Green Building Rating Systems, e.g. LEED®, BREEAM®, DGNB
- lead-free
- WRAS

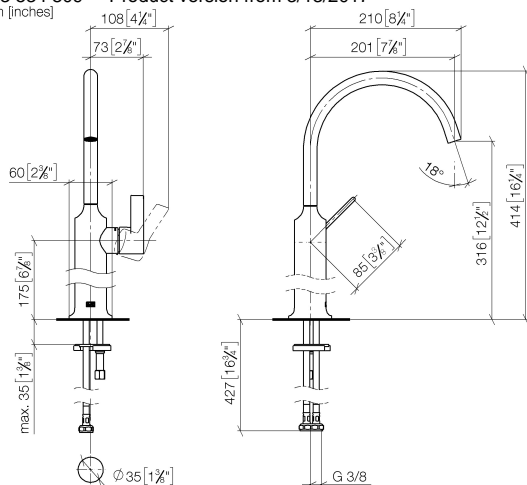
for use on countertop bowls

	Champagne (22kt Gold)	33 534 809-47
	Chrome	33 534 809-00
	Brushed Platinum	33 534 809-06
	Platinum	33 534 809-08
	Dark Chrome	33 534 809-19
	Brushed Durabronze (23kt Gold)	33 534 809-28
	Brushed Dark Brass	33 534 809-39
	Brushed Bronze	33 534 809-42
	Brushed Champagne (22kt Gold)	33 534 809-46
	Brushed Dark Platinum	33 534 809-99

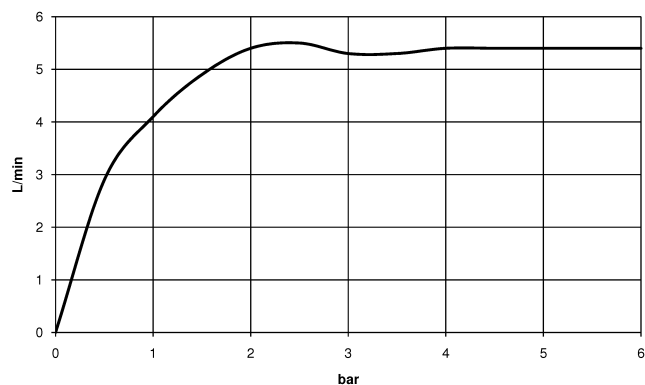
VAIA Single-lever basin mixer with raised base without pop-up waste - Champagne (22kt Gold)

VAIA

33 534 809 Product version from 3/13/2017
mm [inches]



Flow rate chart



Codes & Standards

DIN 4109

Executive Order
no. 1007

ISO 3822

Scottish Water
Byelaws

UK Water Supply
Regulations

Ü-Zeichen



VAIA Single-lever basin mixer with raised base without pop-up waste -
Champagne (22kt Gold)

VAIA

33 534 809 Product version from 3/13/2017

Certificates and sustainability

LGA_29

GDV_0400

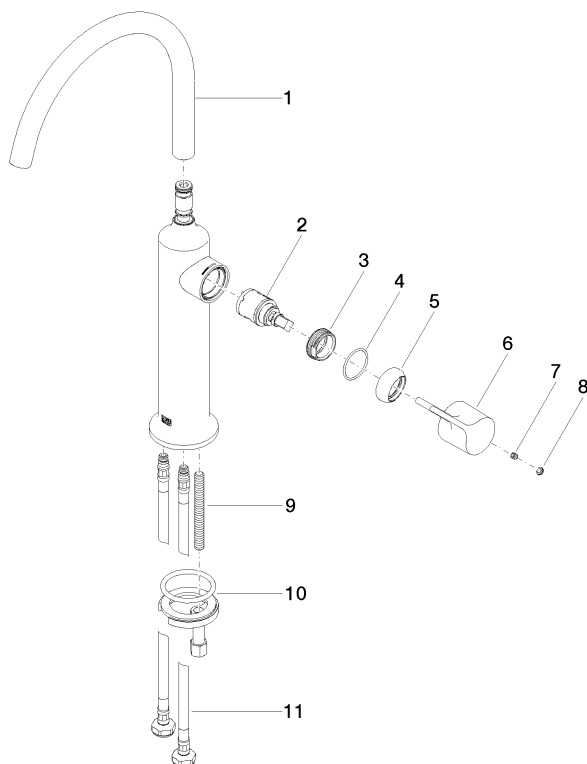
WRAS_240702

VAIA Single-lever basin mixer with raised base without pop-up waste - Champagne (22kt Gold)

VAIA

33 534 809 Product version from 3/13/2017

Parts for other
finishes can be found
here: [Chrome](#)



Spare parts list

No.	Item Number	Name	Quantity used	Delivery time
3	09 24 04 266 90	nut	1.00	2
10	04 30 11 038 00 90	fixing set	1.00	2
2	90 15 05 042 00 90	cartridge	1.00	2
6	09 20 80 020-47	handle	1.00	60
11	04 30 04 100 00 90	hose	2.00	2
1	90 28 22 313 00-47	spout	1.00	30
8	90 31 20 087 00-47	plug	1.00	30
9	09 31 11 011 90	pin	1.00	2
4	09 14 10 091 90	seal	1.00	2
5	09 28 30 021-47	cover	1.00	60
7	90 31 11 030 00 90	pin	1.00	2