

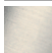




33 600 845

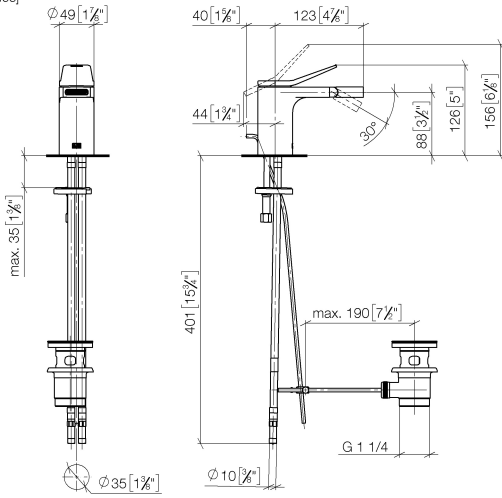


- 123mm projection
- ball-joint pivotable through 30°
- rectangular, air-enriched flow
- height of mixer 127 mm
- height up to aerator 83 mm
- hole diameter 35 mm
- 2x screw-in M 8 x 1 pressure hose, leak-tested
- max. flow 6 l/min
- WRAS 240202012

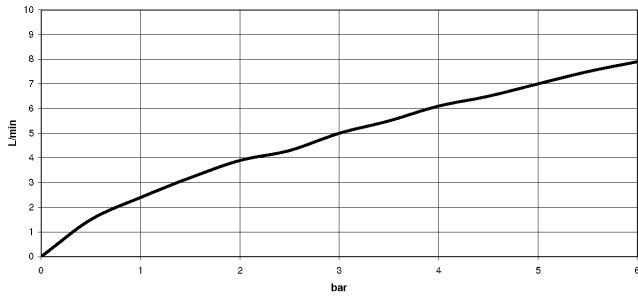
|   |                       |               |
|---|-----------------------|---------------|
|  | Dark Chrome           | 33 600 845-19 |
|  | Chrome                | 33 600 845-00 |
|  | Brushed Platinum      | 33 600 845-06 |
|  | Brushed Chrome        | 33 600 845-93 |
|  | Brushed Dark Platinum | 33 600 845-99 |

33 600 845

mm [inches]



**Flow rate chart**



**Certificates**

LGA\_29009.

WRAS\_240202012.

33 600 845

Parts for other finishes can be found here: [Chrome](#)

