

ENO Single-lever mixer - Platinum


ENO

33 800 760 Product version up to 5/15/2020



- 220mm projection
- pivotable spout 130°
- air-enriched flow
- height of mixer 167 mm
- height up to aerator 145 mm
- hole diameter 35 mm
- max. flow 8 l/min at 3 bar flow pressure
- lead-free
- This product can help a building meet the requirements of Green Building Rating Systems, e.g. LEED®, BREEAM®, DGNB
- WRAS

Recommended miscellaneous




Strainer waste with control handle

- Platinum

10 712 970-08

Recommended miscellaneous

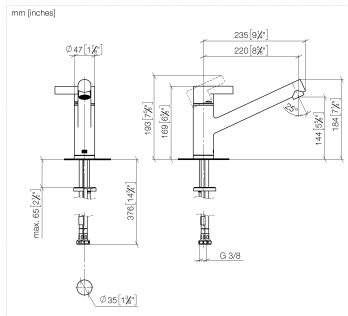


Dispenser without rosette -

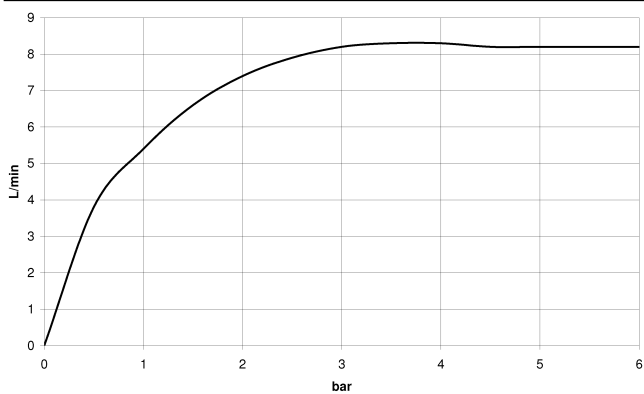
Platinum

82 424 970-08

33 800 760 Product version up to 5/15/2020



Flow rate chart



Codes & Standards

DIN 4109

EN 817

Executive Order
no. 1007

ISO 3822

Ü-Zeichen

VA-Zeichen



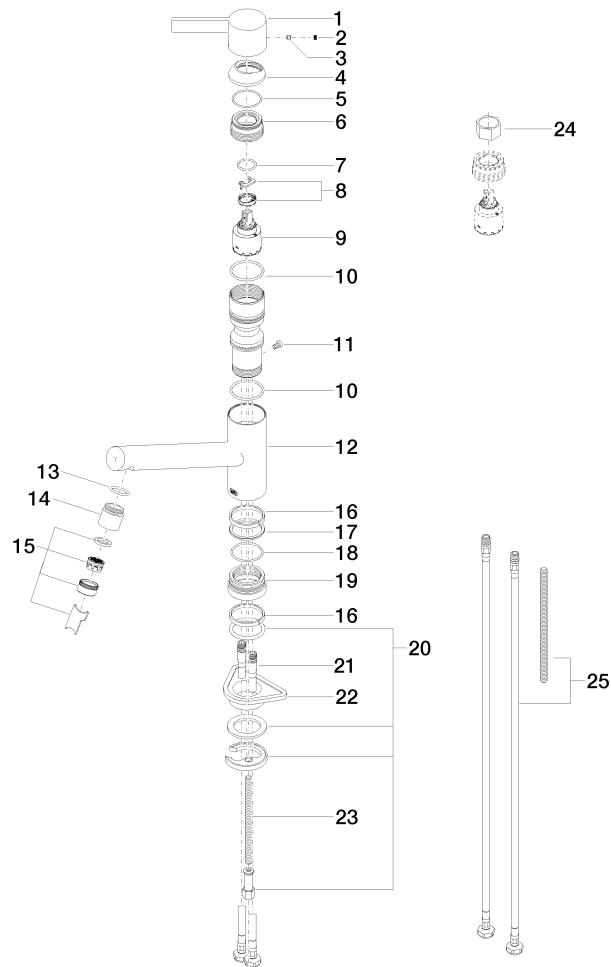
ENO Single-lever mixer - Platinum

ENO

33 800 760 Product version up to 5/15/2020

Certificates and sustainability

| | | |
|--------|----------|--------|
| ETA_20 | GDV_0400 | LGA_19 |
|--------|----------|--------|



Spare parts list

| No. | Item Number | Name | Quantity used | Delivery time |
|-----|--------------------|-------------|---------------|---------------|
| 18 | 09 14 10 034 90 | seal | 1.00 | 2 |
| 10 | 09 14 10 038 90 | seal | 1.00 | 2 |
| 19 | 09 27 76 001-08 | rosette | 1.00 | 40 |
| 12 | 09 19 76 002-08 | sleeve | 1.00 | 40 |
| 22 | 09 18 40 090 90 | sleeve | 1.00 | 2 |
| 21 | 04 30 04 104 00 90 | hose | 2.00 | 2 |
| 23 | 09 31 11 091 90 | pin | 1.00 | 2 |
| 9 | 90 15 05 064 00 90 | cartridge | 1.00 | 2 |
| 25 | 12 803 970 90 | extension | 1.00 | 60 |
| 17 | 09 28 10 144 90 | ring | 1.00 | 2 |
| 20 | 04 30 11 038 75 90 | fixing set | 1.00 | 2 |
| 11 | 09 30 30 112 90 | screw | 1.00 | 2 |
| 6 | 09 24 04 270 90 | nut | 1.00 | 2 |
| 13 | 09 14 10 100 90 | seal | 1.00 | 2 |
| 5 | 09 14 10 102 90 | seal | 1.00 | 2 |
| 4 | 09 28 30 012-08 | cover | 1.00 | 40 |
| 16 | 09 14 15 029 90 | ring | 2.00 | 2 |
| 14 | 09 24 04 164 10-08 | nipple | 1.00 | 40 |
| 7 | 09 14 10 031 90 | seal | 1.00 | 2 |
| 1 | 09 20 76 001-08 | handle | 1.00 | 40 |
| 15 | 90 23 01 026 07-08 | aerator | 1.00 | 40 |
| 3 | 90 31 11 030 00 90 | pin | 1.00 | 2 |
| 2 | 90 31 20 109 00 90 | plug | 1.00 | 2 |
| 24 | 90 30 09 031 00 90 | key | 1.00 | 2 |
| 8 | 90 28 10 148 00 90 | accessories | 1.00 | 2 |