

ENO Single-lever mixer - Champagne (22kt Gold)

ENO

33 800 760
Product version from 5/6/2021



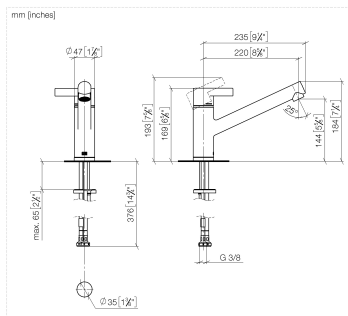
- 220mm projection
- pivotable spout 130°
- air-enriched flow
- height of mixer 167 mm
- height up to aerator 145 mm
- hole diameter 35 mm
- max. flow 8 l/min at 3 bar flow pressure
- lead-free
- This product can help a building meet the requirements of Green Building Rating Systems, e.g. LEED®, BREEAM®, DGNB
- WRAS

Recommended miscellaneous

	Dispenser without rosette - Champagne (22kt Gold)	82 424 970-47

Recommended miscellaneous

	Strainer waste with control handle - Champagne (22kt Gold)	10 712 970-47



Flow rate chart



Codes & Standards

DIN 4109

Executive Order
no. 1007

ISO 3822

Ü-Zeichen



ENO Single-lever mixer - Champagne (22kt Gold)

ENO

33 800 760 Product version from 5/6/2021

Certificates and sustainability

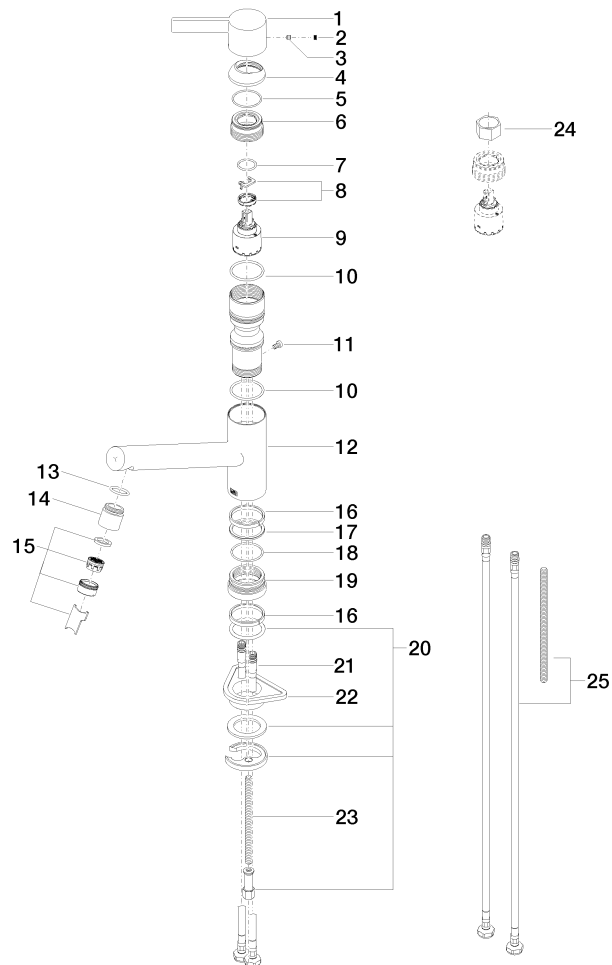
GDV_0400

LGA_19

ENO Single-lever mixer - Champagne (22kt Gold)

ENO

33 800 760 Product version from 5/6/2021





ENO Single-lever mixer - Champagne (22kt Gold)

ENO

33 800 760 Product version from 5/6/2021

Spare parts list

No.	Item Number	Name	Quantity used	Delivery time
6	09 24 04 270 90	nut	1.00	2
4	09 28 30 012-47	cover	1.00	30
18	09 14 10 034 90	seal	1.00	2
17	09 28 10 144 90	ring	1.00	2
19	09 27 76 001-47	rosette	1.00	30
21	04 30 04 104 00 90	hose	2.00	2
12	09 19 76 002-47	sleeve	1.00	30
10	09 14 10 038 90	seal	1.00	2
25	12 803 970 90	extension	1.00	60
23	09 31 11 091 90	pin	1.00	2
15	90 23 01 026 07-47	aerator	1.00	30
5	09 14 10 102 90	seal	1.00	2
9	90 15 05 064 00 90	cartridge	1.00	2
22	09 18 40 090 90	sleeve	1.00	2
13	09 14 10 100 90	seal	1.00	2
1	09 20 76 001-47	handle	1.00	30
11	09 30 30 112 90	screw	1.00	2
20	04 30 11 038 75 90	fixing set	1.00	2
16	09 14 15 029 90	ring	2.00	2
14	09 24 04 164 10-47	nipple	1.00	30
7	09 14 10 031 90	seal	1.00	2
24	90 30 09 031 00 90	key	1.00	2
3	90 31 11 030 00 90	pin	1.00	2
8	90 28 10 148 00 90	accessories	1.00	2
2	90 31 20 109 00 90	plug	1.00	2