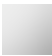




33 845 110



- 237mm projection
  - pivotable spout 120°
  - air-enriched flow and spray flow
  - fabric braided hose 1500 mm
  - max. flow 8.8 l/min at 3 bar flow pressure
- Intrinsic protection against back flow.

|   |                |               |
|---|----------------|---------------|
|  | Chrome         | 33 845 110-00 |
|  | Soft Black     | 33 845 110-69 |
|  | Brushed Nickel | 33 845 110-70 |

33 845 110

mm [inches]



### Flow rate chart



### Codes & Standards

DIN 4109

EN 1717

EN 817

ISO 3822

Ü-Zeichen

XP P 41-280



DORNBRACHT LYV Single-lever mixer Pull-out - Chrome

DORNBRACHT  
LYV

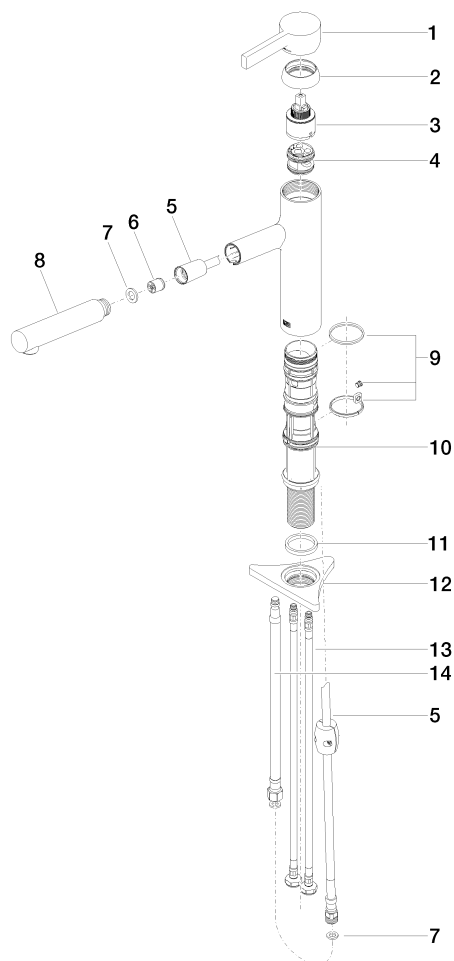
33 845 110

Certificates and sustainability

|                   |               |        |                 |
|-------------------|---------------|--------|-----------------|
| Belgaqua_23-012-2 | ACS_23 ACC NY | AbP_10 | DVGW_DW-6506DN0 |
|-------------------|---------------|--------|-----------------|

33 845 110

Parts for other  
finishes can be found  
here: [Soft Black](#)



## Spare parts list

| No. | Item Number        | Name         | Quantity used | Delivery time |
|-----|--------------------|--------------|---------------|---------------|
| 1   | 90 20 81 001 00-00 | handle       | 1.00          | 2             |
| 8   | 90 12 11 180 00-00 | shower       | 1.00          | 2             |
| 7   | 90 14 05 081 00 90 | seal         | 1.00          | 2             |
| 10  | 90 30 01 211 00 90 | shaft        | 1.00          | 2             |
| 3   | 90 15 05 067 00 90 | cartridge    | 1.00          | 2             |
| 13  | 04 30 04 100 00 90 | hose         | 2.00          | 2             |
| 4   | 90 18 40 227 00 90 | insert       | 1.00          | 2             |
| 11  | 90 14 05 080 00 90 | seal         | 1.00          | 2             |
| 6   | 90 23 01 051 00 90 | flow reducer | 1.00          | 2             |
| 12  | 90 23 10 003 00 90 | fixing set   | 1.00          | 2             |
| 5   | 90 30 02 101 00 90 | hose         | 1.00          | 2             |
| 14  | 90 30 04 110 00 90 | hose         | 1.00          | 2             |
| 9   | 90 14 15 062 00 90 | gasket kit   | 1.00          | 2             |
| 2   | 90 28 30 010 00-00 | cover        | 1.00          | 2             |