

TARA ULTRA Profi single-lever mixer - Platinum








TARA ULTRA

33 860 875

Product version up to 7/24/2018



- 240mm projection
 - pivotable 360°
 - air-enriched flow and spray flow
 - height of mixer 685 mm
 - height up to aerator 129 mm
 - hole diameter 35 mm
 - sprayface with anti-scaling system
 - max. flow 8 l/min at 3 bar flow pressure
 - lead-free
 - This product can help a building meet the requirements of Green Building Rating Systems, e.g. LEED®, BREEAM®, DGNB
- Intrinsic protection against back flow.

	Platinum	33 860 875-08
	Chrome	33 860 875-00
	Brushed Platinum	33 860 875-06
	Dark Chrome	33 860 875-19
	Brushed Bronze	33 860 875-42
	Brushed Chrome	33 860 875-93
	Brushed Dark Platinum	33 860 875-99

Recommended miscellaneous

	Strainer waste with control handle - Platinum	10 712 970-08
---	--	---------------

Recommended miscellaneous

	Dispenser without rosette - Platinum	82 424 970-08
---	---	---------------

33 860 875 Product version up to 7/24/2018



Flow rate chart



Codes & Standards

DIN 4109

EN 1717

ISO 3822

Ü-Zeichen



TARA ULTRA Profi single-lever mixer - Platinum

TARA ULTRA

33 860 875 Product version up to 7/24/2018

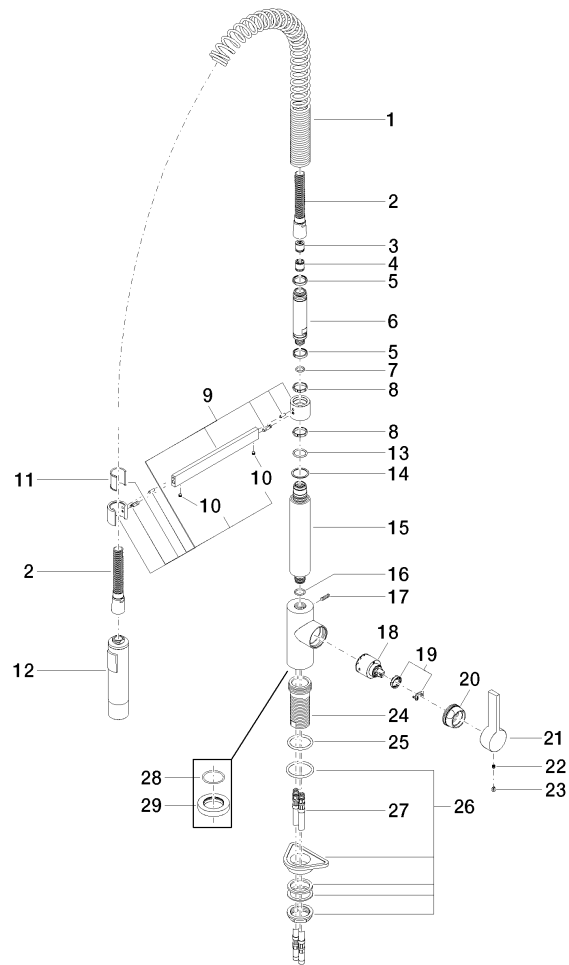
Certificates and sustainability

LGA_18

Belgaqua_22_277_2

33 860 875 Product version up to 7/24/2018

Parts for other
finishes can be found
here: [Chrome](#)



Spare parts list

No.	Item Number	Name	Quantity used	Delivery time
18	90 15 05 061 00 90	cartridge	1.00	60
3	09 23 01 046 90	back-flow preventer	1.00	2
15	09 11 10 072 10-08	connection	1.00	40
13	09 14 10 100 90	seal	1.00	2
1	09 16 02 035 90	spring	1.00	2
24	09 30 01 111 20 90	sleeve	1.00	2
17	04 31 11 113 00 90	pin	1.00	2
14	09 28 10 122 90	ring	1.00	2
12	04 12 11 092 10-08	shower	1.00	40
21	09 20 79 040-08	handle	1.00	40
28	09 14 10 149 90	seal	1.00	2
9	04 17 20 029 00-08	holder	1.00	40
23	09 31 20 017 90	plug	1.00	2
25	09 14 10 036 90	seal	1.00	2
27	04 30 04 016 00 90	hose	2.00	60
8	09 28 10 181 90	ring	2.00	2
20	09 24 04 107-08	nut	1.00	40
26	04 23 10 044 02 90	fixing set	1.00	2
11	09 18 40 118 90	sleeve	1.00	2
5	09 14 15 024 90	ring	2.00	2
29	09 28 10 035-08	rosette	1.00	60
6	09 30 01 067 10-08	adaptor	1.00	40
10	90 31 11 112 00 90	pin	2.00	2
4	90 23 01 141 00 90	back-flow preventer	1.00	2
22	90 31 11 030 00 90	pin	1.00	2
19	90 28 10 148 00 90	accessories	1.00	2
16	90 14 10 055 00 90	seal	1.00	2
2	90 30 02 065 00-08	hose	1.00	-
Spare part can no longer be ordered, please order the replacement item				
7	90 14 10 077 00 90	seal	1.00	2