

35 020 970 90



- lead-free, dezincification resistant
- 2x back flow preventer
- 3x outlet G 1/2"
- 2x female thread 1/2" connections
- 2x integrated supply stop
- dust cover
- anti-water packing
- sound and thermal insulation
- gauge 60 mm
- WRAS

Recommended miscellaneous

	<b>Extension 25 mm -</b>	12 191 970 90
	•for concealed single-lever shower and bath mixer 36 12X SSS-FF	

Recommended miscellaneous

	<b>Extension 25 mm -</b>	12 190 970 90
	•for concealed single-lever shower and bath mixer 36 02X SSS-FF	

Recommended miscellaneous

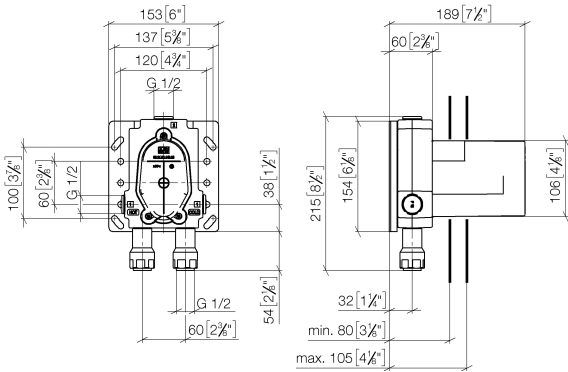
	<b>xGRID Attachment set for integrating in the dry wall construction -</b>	12 340 970 90

Required miscellaneous

	<b>xGRID Installation track 555 mm -</b>	12 360 970 90

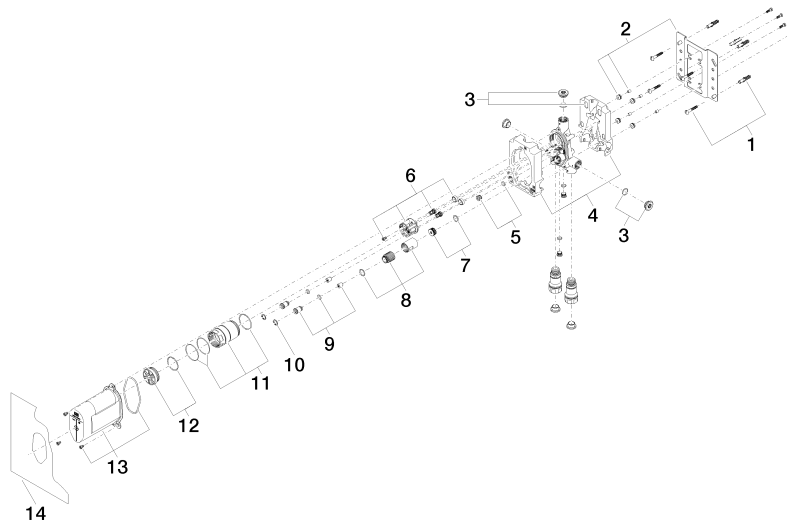
35 020 970 90

mm [inches]



Codes & Standards			
DIN 4109	EN 817	ISO 3822	Scottish Water Byelaws
UK Water Supply Regulations	Ü-Zeichen		

Certificates and sustainability		
DVGW_DW-6512DN0	LGA_19	WRAS_2207



## Spare parts list

No.	Item Number	Name	Quantity used	Delivery time
	4 09 11 11 058 90	accessories	1.00	2
	13 90 21 02 148 00 90	cap	1.00	2
	1 04 30 31 024 01 90	fixing set	2.00	2
	6 90 18 40 151 00 90	insert	1.00	2
	8 90 17 01 189 00 90	sleeve	1.00	2
	3 04 31 20 006 00 90	plug	2.00	2
	14 04 14 03 155 00 90	gasket kit	1.00	2
	7 90 31 20 098 00 90	plug	1.00	2
	11 90 17 01 187 00 90	sleeve	1.00	2
	9 04 24 03 223 00 90	insert	2.00	2
	10 09 16 01 014 90	ring	2.00	2
	12 04 31 20 100 00 90	plug	1.00	2
	2 04 17 20 128 00 90	holder	1.00	2
	5 04 31 20 039 11 90	plug	1.00	2