

Concealed single-lever mixer with cover plate with integrated shower connection - Brushed Durabross (23kt Gold)



TARA

36 045 660




- cover plate Ø 78 mm
- Intrinsic protection against back flow.**
- Article cannot be extended, please check the depth of the installation location!**
- Intrinsic protection against back flow.
- Article cannot be extended, please check the depth of the installation location!

Fits: TARA, META

	Brushed Durabross (23kt Gold)	36 045 660-28
	Chrome	36 045 660-00
	Brushed Platinum	36 045 660-06
	Platinum	36 045 660-08
	Dark Chrome	36 045 660-19
	Light Gold	36 045 660-26
	Brushed Light Gold	36 045 660-27
	Matte Black	36 045 660-33
	Brushed Bronze	36 045 660-42
	Brushed Champagne (22kt Gold)	36 045 660-46
	Champagne (22kt Gold)	36 045 660-47
	Brushed Chrome	36 045 660-93
	Brushed Dark Platinum	36 045 660-99

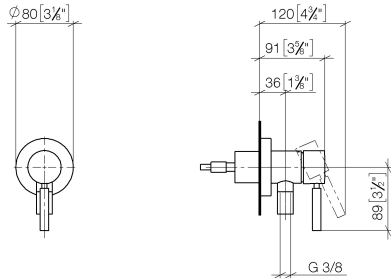
Required miscellaneous

	Concealed wall mounting - •max. recess depth 103 mm •min. recess depth 78 mm	35 003 970 90
---	---	---------------

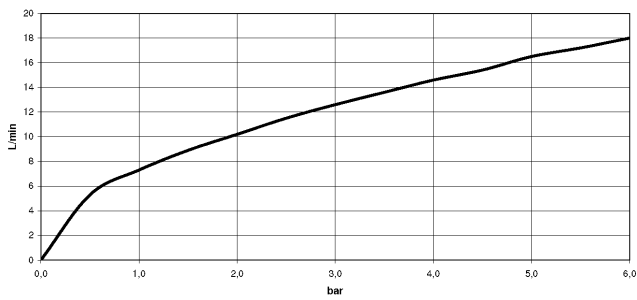
Concealed single-lever mixer with cover plate with integrated shower connection - Brushed Durabronz (23kt Gold)

TARA

36 045 660
mm [inches]



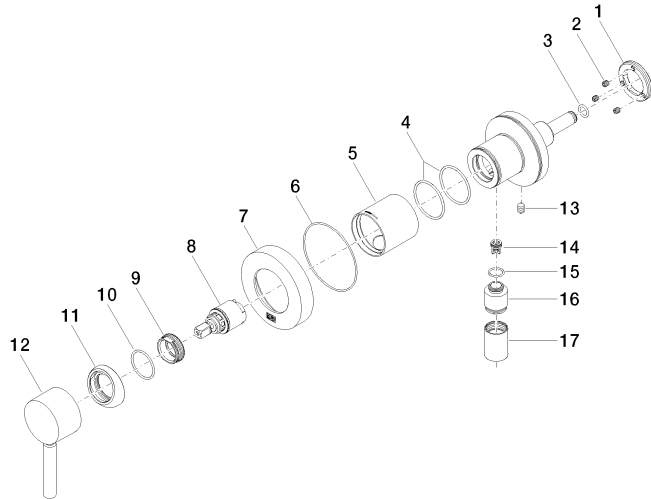
Flow rate chart



Certificates

Belgaqua_21-025- 27_1. LGA_29569. WRAS_2101023.

36 045 660



Spare parts list

No.	Item Number	Name	Quantity used	Delivery time
1	09 24 77 002 90	nut	1	2
2	90 31 11 030 00 90	pin	3	2
3	09 14 10 139 90	seal	1	2
4	09 14 10 111 90	seal	2	2
5	09 18 40 215-28	sleeve	1	20
6	09 14 10 518 90	seal	1	60
7	09 27 66 000-28	rosette	1	20
8	90 15 05 044 00 90	cartridge	1	2
9	09 24 04 266 90	nut	1	2
10	09 14 10 120 90	seal	1	2
11	09 28 30 041-28	cover	1	20
12	90 20 66 006 00-28	handle	1	20
13	09 31 11 144 90	pin	1	2
14	09 23 01 131 90	back-flow preventer	1	2
15	09 14 10 213 90	seal	1	2
16	09 24 03 281-28	nipple	1	20
17	90 21 02 069 00-28	cover	1	20