

**Concealed single-lever mixer with cover plate with integrated shower connection - Matte Black**

TARA

36 045 660



- cover plate Ø 78 mm
- WRAS 2101023

**Intrinsic protection against back flow.**

**Article cannot be extended, please check the depth of the installation location!**

Intrinsic protection against back flow.

Article cannot be extended, please check the depth of the installation location!

Fits: TARA, META

	Matte Black	36 045 660-33
	Chrome	36 045 660-00
	Brushed Platinum	36 045 660-06
	Platinum	36 045 660-08
	Dark Chrome	36 045 660-19
	Light Gold	36 045 660-26
	Brushed Light Gold	36 045 660-27
	Brushed Durabrass (23kt Gold)	36 045 660-28
	Brushed Bronze	36 045 660-42
	Brushed Champagne (22kt Gold)	36 045 660-46
	Champagne (22kt Gold)	36 045 660-47
	Brushed Chrome	36 045 660-93
	Brushed Dark Platinum	36 045 660-99

**Required miscellaneous**

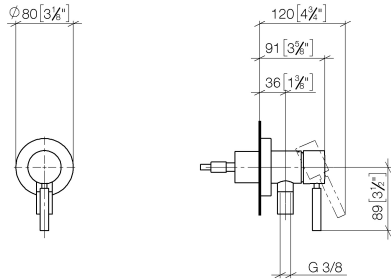
- Concealed wall mounting -** 35 003 970 90
  - max. recess depth 103 mm
  - min. recess depth 78 mm



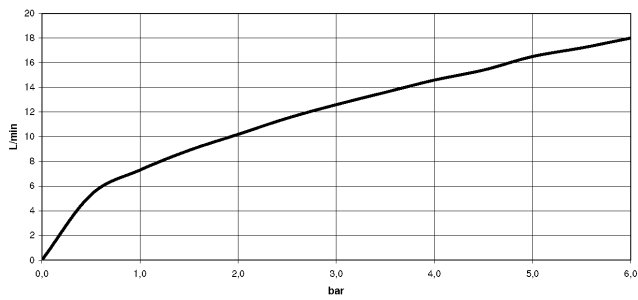
**Concealed single-lever mixer with cover plate with integrated shower connection - Matte Black**

TARA

36 045 660  
mm [inches]



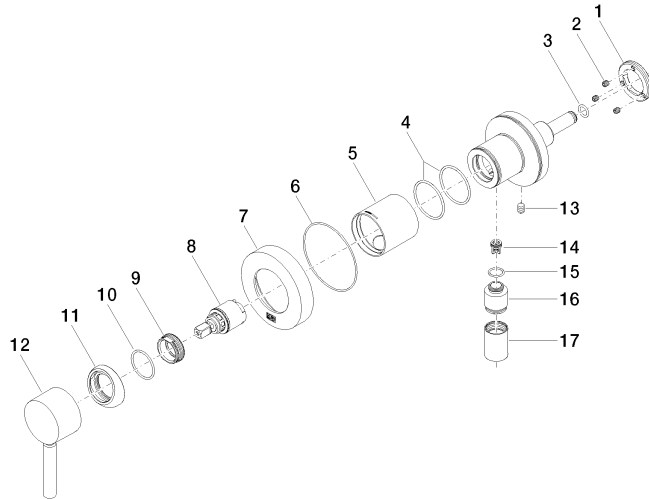
**Flow rate chart**



**Certificates**

Belgaqua\_21-025- 27\_1. LGA\_29569. WRAS\_2101023.

36 045 660



### Spare parts list

No.	Item Number	Name	Quantity used	Delivery time
1	09 24 77 002 90	nut	1	2
2	90 31 11 030 00 90	pin	3	2
3	09 14 10 139 90	seal	1	2
4	09 14 10 111 90	seal	2	2
5	09 18 40 215-33	sleeve	1	30
6	09 14 10 518 90	seal	1	60
7	09 27 66 000-33	rosette	1	30
8	90 15 05 044 00 90	cartridge	1	2
9	09 24 04 266 90	nut	1	2
10	09 14 10 120 90	seal	1	2
11	09 28 30 041-33	cover	1	30
12	90 20 66 006 00-33	handle	1	30
13	09 31 11 144 90	pin	1	2
14	09 23 01 131 90	back-flow preventer	1	2
15	09 14 10 213 90	seal	1	2
16	09 24 03 281-33	nipple	1	30
17	90 21 02 069 00-33	cover	1	30