






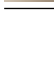
SYMETRICS Concealed two-way diverter - Brushed Dark Platinum

IMO

36 200 980



- rotary diverter
- rosette 60 x 60 mm
- WRAS 2307045

	Brushed Dark Platinum	36 200 980-99
	Chrome	36 200 980-00
	Brushed Platinum	36 200 980-06
	Brushed Light Gold	36 200 980-27
	Brushed Durabronze (23kt Gold)	36 200 980-28
	Brushed Champagne (22kt Gold)	36 200 980-46
	Champagne (22kt Gold)	36 200 980-47

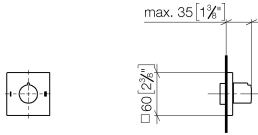
Required miscellaneous



- Concealed two-way diverter -** 35 202 970 90
- max. recess depth 160 mm
 - min. recess depth 85 mm

36 200 980

mm [inches]



Flow rate chart

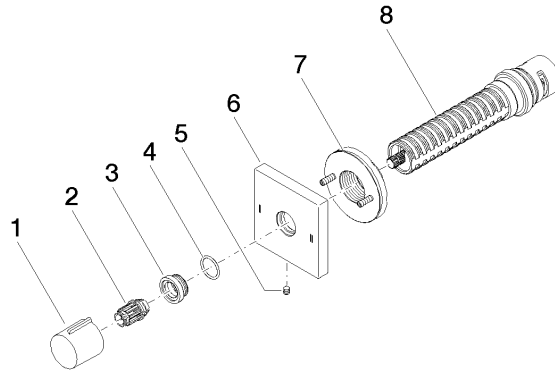


Certificates

LGA_38379.

WRAS_2307045.

36 200 980



Spare parts list

No.	Item Number	Name	Quantity used	Delivery time
1	09 20 98 001-99	handle	1	30
2	09 12 12 005 90	fixing cap	1	2
3	09 12 12 043-99	base	1	30
4	09 14 10 017 90	seal	1	2
5	09 31 11 294 90	pin	1	2
6	09 27 98 037-99	rosette	1	30
7	90 21 02 181 00 90	disc	1	2
8	90 90 03 304 10 90	diverter	1	2