





LULU Concealed thermostat with two function volume control - Brushed Platinum


LULU

36 426 710	Product version up to 8/24/2020		
	<ul style="list-style-type: none"> rotary diverter with volume control and shut-off function cover plate 150 x 90 mm temperature control handle with safety limit stop at 38°C hot water temperature limiter, can be preset WRAS 		Brushed Platinum
			36 426 710-06
			Chrome
			36 426 710-00


Required miscellaneous

	Concealed thermostat with built-in isolators - ●max. recess depth 136 mm ●min. recess depth 80 mm	35 426 970 90
---	--	---------------


Recommended miscellaneous

	xGRID Attachment set for integrating in the dry wall construction -	12 340 970 90
---	--	---------------

Required miscellaneous

	Concealed thermostat - ●max. recess depth 136 mm ●min. recess depth 80 mm	35 425 970 90
---	--	---------------

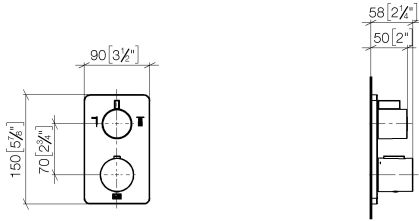
Required miscellaneous

	xGRID Installation track 555 mm -	12 360 970 90
--	--	---------------

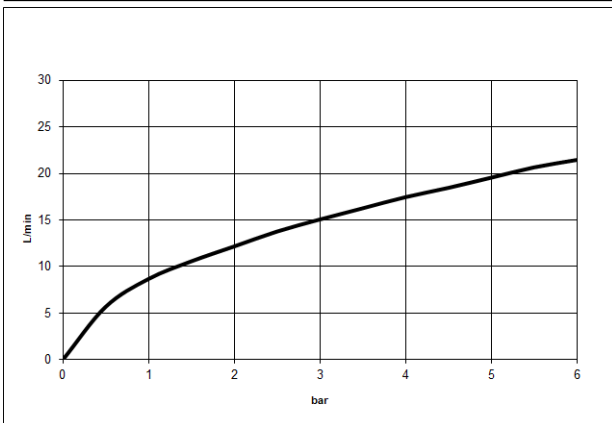
LULU Concealed thermostat with two function volume control - Brushed Platinum

LULU

36 426 710 Product version up to 8/24/2020
mm [inches]



Flow rate chart



Codes & Standards

DIN 4109	EN 1111	ISO 3822	Scottish Water Byelaws
UK Water Supply Regulations	Ü-Zeichen	VA-Zeichen	XP P 41-280



LULU Concealed thermostat with two function volume control - Brushed Platinum

LULU

36 426 710 Product version up to 8/24/2020

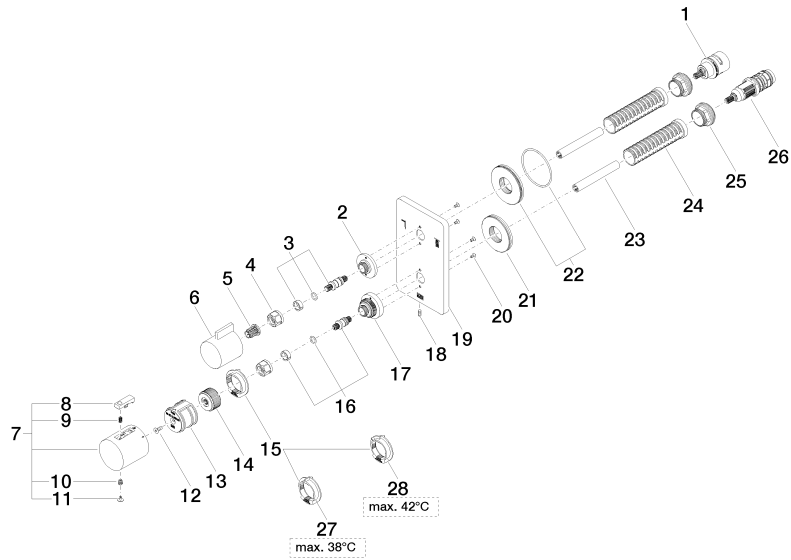
Certificates and sustainability

ACS_20 ACC LY	LGA_19	ETA_20	DVGW_DW-6512DN0	LGA_19
WRAS_250402				

LULU Concealed thermostat with two function volume control - Brushed Platinum

LULU

36 426 710 Product version up to 8/24/2020





LULU Concealed thermostat with two function volume control - Brushed Platinum

LULU

36 426 710 Product version up to 8/24/2020

Spare parts list

No.	Item Number	Name	Quantity used	Delivery time
7	90 17 33 004 00-06	handle	1.00	10
17	09 12 12 051-06	base	1.00	10
20	09 30 30 157 90	screw	4.00	2
15	09 28 10 143 90	regulator	1.00	60
5	90 12 12 002 00 90	fixing cap	1.00	2
19	09 11 02 247-06	plate	1.00	60
1	90 90 03 163 00 90	diverter	1.00	2
21	09 30 01 188 90	disc	1.00	60
25	09 24 04 257 90	nut	2.00	2
18	09 31 11 134 90	pin	1.00	2
6	09 20 67 006-06	handle	1.00	10
26	90 15 02 012 00 90	cartridge	1.00	60
27	09 28 10 150 90	regulator	1.00	60
2	09 12 12 053-06	base	1.00	10
28	09 28 10 151 90	regulator	1.00	60
14	09 12 12 054 90	base	1.00	2
22	90 30 01 190 00 90	disc	1.00	2
9	90 16 02 027 00 90	spring	1.00	2
16	04 29 06 024 01-00	spindle	1.00	10
10	90 30 30 136 00 90	screw	1.00	2
4	90 23 30 023 00 90	nut	2.00	2
11	90 31 20 049 00-13	plug	1.00	30
3	04 29 06 111 01-00	spindle	1.00	10
23	90 23 01 124 00 90	sleeve	2.00	2
24	90 18 40 077 01 90	spindle	2.00	2
13	90 12 12 052 00 90	base	1.00	2
12	90 30 30 124 00 90	screw	1.00	2
8	90 21 33 011 00-13	handle	1.00	2