

xTOOL Concealed thermostat without volume control 3/4" - Brushed Platinum

SERIES SPECIFIC

36 503 985
Product version up to 1/1/2022



- cover plate 120 x 120 mm
- temperature control handle with safety limit stop at 38°C
- thermostat cartridge
- WRAS

	Brushed Platinum	36 503 985-06
	Chrome	36 503 985-00
	Platinum	36 503 985-08
	Dark Chrome	36 503 985-19
	Brushed Light Gold	36 503 985-27
	Brushed Durabrass (23kt Gold)	36 503 985-28
	Matte Black	36 503 985-33
	Brushed Champagne (22kt Gold)	36 503 985-46
	Champagne (22kt Gold)	36 503 985-47
	Brushed Chrome	36 503 985-93
	Brushed Dark Platinum	36 503 985-99

Required miscellaneous



**xTOOL Concealed thermostat module without volume control -**
35 503 970 90

- max. recess depth 160 mm
- min. recess depth 95 mm

Required miscellaneous



**xGRID Installation track 555 mm -**
12 360 970 90

Recommended miscellaneous

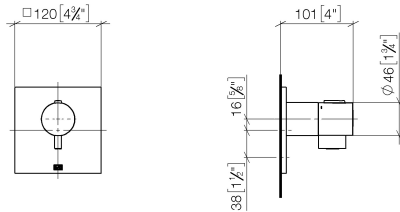


**xGRID Attachment set for integrating in the dry wall construction -**
12 340 970 90

**xTOOL Concealed thermostat without volume control 3/4" - Brushed Platinum** **SERIES SPECIFIC**

36 503 985 Product version up to 1/1/2022

mm [inches]



**Flow rate chart**



**Codes & Standards**

DIN 4109

EN 1111

ISO 3822

Scottish Water  
Byelaws

UK Water Supply  
Regulations

Ü-Zeichen



xTOOL Concealed thermostat without volume control 3/4" - Brushed Platinum

SERIES SPECIFIC

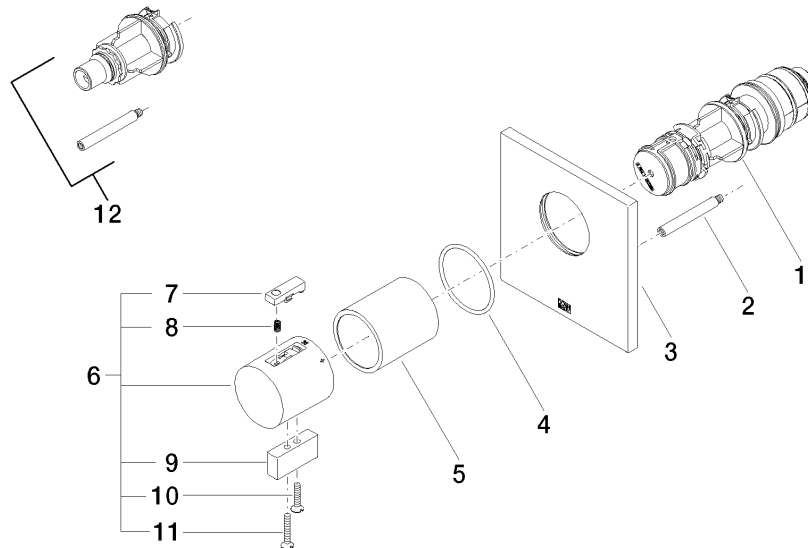
36 503 985    Product version up to 1/1/2022

Certificates and sustainability

WRAS_2011	DVGW_DW-6512DN0	LGA_29	LGA_29
-----------	-----------------	--------	--------

# xTOOL Concealed thermostat without volume control 3/4" - Brushed Platinum SERIES SPECIFIC

36 503 985 Product version up to 1/1/2022



## Spare parts list

No.	Item Number	Name	Quantity used	Delivery time
6	04 17 33 006 00-06	handle	1.00	60
11	09 30 30 160-06	screw	2.00	10
3	09 11 02 196-06	cover	1.00	60
10	09 30 30 159-06	screw	1.00	10
12	12 178 970 90	Extension 46 mm -	1.00	2
8	90 16 02 027 00 90	spring	1.00	2
9	09 20 33 006-06	handle	1.00	10
4	90 14 10 049 00 90	seal	1.00	2
2	90 31 09 095 00 90	bar	1.00	2
5	90 21 02 112 00-06	sleeve	1.00	10
7	90 21 33 011 00-13	handle	1.00	2
1	90 15 02 063 00 90	cartridge	1.00	2