

## WATER CURVE Concealed body spray - Champagne (22kt Gold)

SERIES-VARIOUS

36 514 979 Product version from 4/1/2024



- AQUAPRESSURE FLOW, max. flow rate 10 l/min (at 3 bar)
- water jet adjustable
- cover plate 120 x 60 mm
- 1/2" connection
- WRAS

|  |                               |               |
|--|-------------------------------|---------------|
|  | Champagne (22kt Gold)         | 36 514 979-47 |
|  | Chrome                        | 36 514 979-00 |
|  | Brushed Platinum              | 36 514 979-06 |
|  | Platinum                      | 36 514 979-08 |
|  | Dark Chrome                   | 36 514 979-19 |
|  | Light Gold                    | 36 514 979-26 |
|  | Brushed Light Gold            | 36 514 979-27 |
|  | Brushed Durabrass (23kt Gold) | 36 514 979-28 |
|  | Matte Black                   | 36 514 979-33 |
|  | Brushed Bronze                | 36 514 979-42 |
|  | Brushed Champagne (22kt Gold) | 36 514 979-46 |
|  | Brushed Chrome                | 36 514 979-93 |
|  | Brushed Dark Platinum         | 36 514 979-99 |

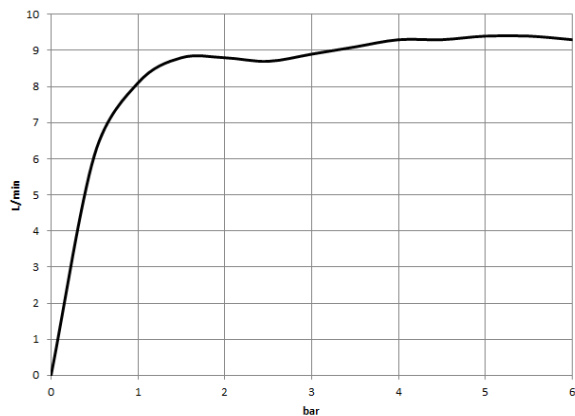
### Recommended miscellaneous

- Concealed wall elbow -** 35 085 970 90
- max. recess depth 163 mm
  - min. recess depth 90 mm





**Flow rate chart**



**Trajectory diagram**



**Codes & Standards**

|          |          |                           |                                |
|----------|----------|---------------------------|--------------------------------|
| DIN 4109 | ISO 3822 | Scottish Water<br>Byelaws | UK Water Supply<br>Regulations |
|----------|----------|---------------------------|--------------------------------|

Ü-Zeichen



## WATER CURVE Concealed body spray - Champagne (22kt Gold)

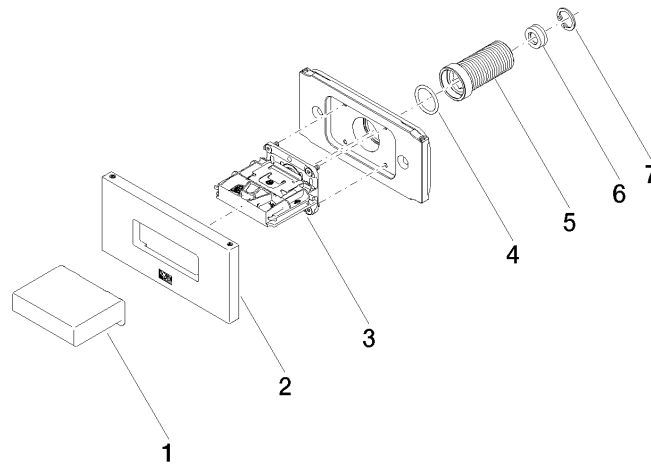
SERIES-VARIOUS

36 514 979 Product version from 4/1/2024

Certificates and sustainability

LGA\_29

WRAS\_250602



## Spare parts list

| No. | Item Number        | Name         | Quantity used | Delivery time |
|-----|--------------------|--------------|---------------|---------------|
| 3   | 90 29 03 088 00 90 | insert       | 1.00          | 2             |
| 1   | 09 17 01 230-47    | casing       | 1.00          | 30            |
| 2   | 90 27 97 041 00-47 | rosette      | 1.00          | 30            |
| 6   | 09 23 01 134 90    | flow reducer | 1.00          | 2             |
| 7   | 09 16 01 014 90    | ring         | 1.00          | 2             |
| 5   | 09 24 04 336 90    | nipple       | 1.00          | 2             |
| 4   | 90 14 10 010 00 90 | seal         | 1.00          | 2             |