






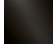
LISSÉ Wall-mounted single-lever basin mixer without pop-up waste - Brushed Platinum

LISSÉ


36 860 845



- 170mm projection
- fixed spout
- circular, air-enriched flow
- hole diameter spout 37 mm
- hole diameter single-lever mixer 57 mm
- rosette 78 x 78 mm
- max. flow 5.7 l/min
- lead-free
- This product can help a building meet the requirements of Green Building Rating Systems, e.g. LEED®, BREEAM®, DGNB


	Brushed Platinum	36 860 845-06
	Chrome	36 860 845-00
	Dark Chrome	36 860 845-19
	Matte Black	36 860 845-33
	Brushed Chrome	36 860 845-93
	Brushed Dark Platinum	36 860 845-99

Required miscellaneous

 **Concealed wall-mounted single-lever mixer mixer on right -** 35 816 970 90

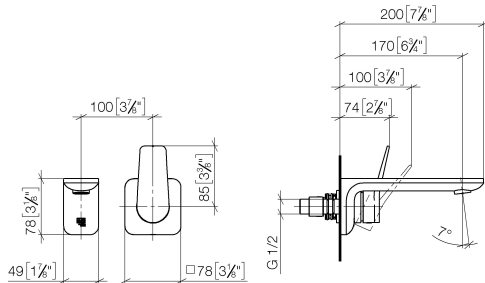
- NOTE:Not suitable for concealed installation.Connection by means of angle valves, mounted with screws to back wall.

Required miscellaneous

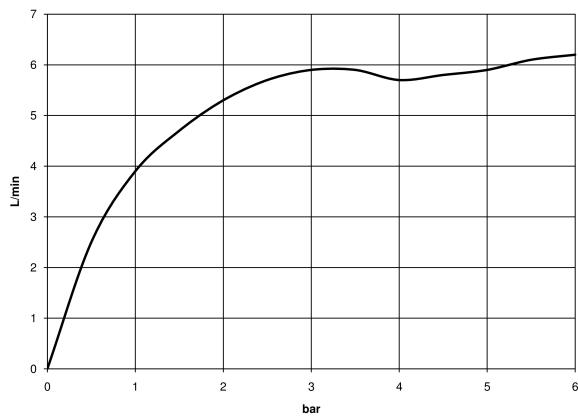
 **Concealed wall-mounted single-lever mixer -** 35 860 970 90

- max. recess depth 95 mm
- min. recess depth 80 mm

36 860 845
mm [inches]



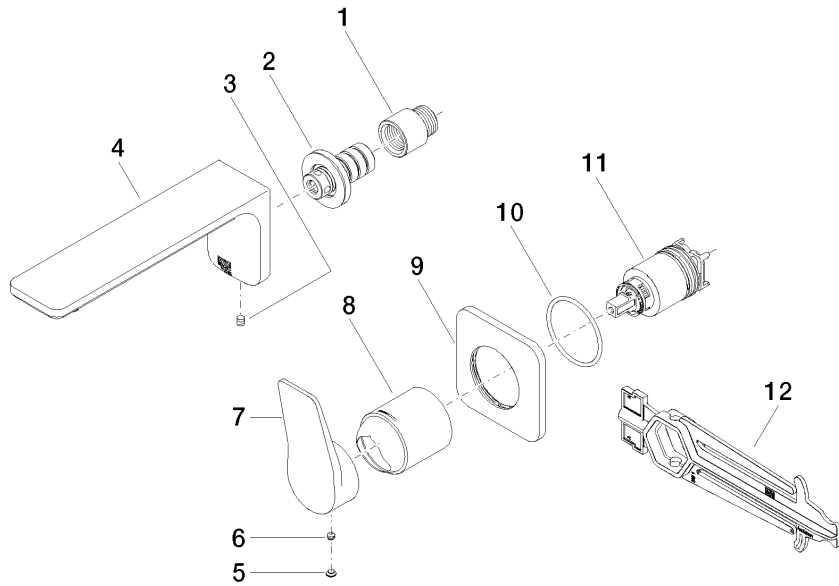
Flow rate chart



Certificates

IAPMO_N-4976 (2). DVGW_DW- IAPMO_8834 (2). IAPMO_6397 (2). IAPMO_4976 (1).
6512DN0435.
LGA_29900. WRAS_2107018.

36 860 845



Spare parts list

No.	Item Number	Name	Quantity used	Delivery time
1	09 24 03 072 10 90	nipple	1	2
2	90 24 03 108 00 90	nipple set	1	2
3	90 31 11 004 00 90	pin	1	2
4	90 11 84 021 00-06	spout	1	10
5	90 31 20 087 00-06	plug	1	10
6	90 31 11 063 00 90	pin	1	2
7	09 20 84 021-06	handle	1	10
8	09 11 02 288-06	cover	1	10
9	90 27 84 020 00-06	rosette	1	10
10	90 14 10 049 00 90	seal	1	2
11	90 15 05 064 01 90	cartridge	1	2
12	90 30 09 064 00 90	key	1	2