







**LISSÉ Wall-mounted single-lever basin mixer without pop-up waste - Brushed Dark Platinum**

LISSÉ


36 860 845




- 170mm projection
- fixed spout
- circular, air-enriched flow
- hole diameter spout 37 mm
- hole diameter single-lever mixer 57 mm
- rosette 78 x 78 mm
- max. flow 5.7 l/min
- lead-free
- This product can help a building meet the requirements of Green Building Rating Systems, e.g. LEED®, BREEAM®, DGNB

	Brushed Dark Platinum	36 860 845-99
	Chrome	36 860 845-00
	Brushed Platinum	36 860 845-06
	Dark Chrome	36 860 845-19
	Matte Black	36 860 845-33
	Brushed Chrome	36 860 845-93


**Required miscellaneous**

	<b>Concealed wall-mounted single-lever mixer mixer on right -</b>	35 816 970 90
	<ul style="list-style-type: none"> <li>•NOTE:Not suitable for concealed installation.Connection by means of angle valves, mounted with screws to back wall.</li> </ul>	

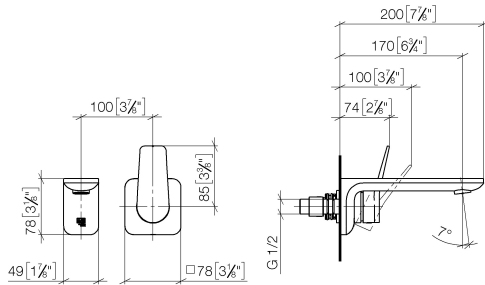
**Required miscellaneous**

	<b>Concealed wall-mounted single-lever mixer -</b>	35 860 970 90
	<ul style="list-style-type: none"> <li>•min. recess depth 80 mm</li> <li>•max. recess depth 95 mm</li> </ul>	

**Recommended miscellaneous**

	<b>Basin Waste with knob for deck mounting 1 1/4" - Brushed Dark Platinum</b>	10 200 970-99
---	---	---------------

36 860 845  
mm [inches]



**Flow rate chart**



**Certificates**

IAPMO\_N-4976 (2). DVGW\_DW-6512DN0435. IAPMO\_8834 (2). IAPMO\_6397 (2). WRAS\_2107018.

36 860 845

