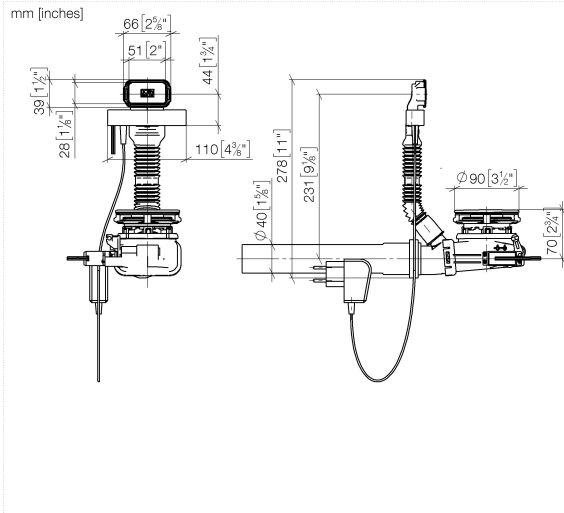
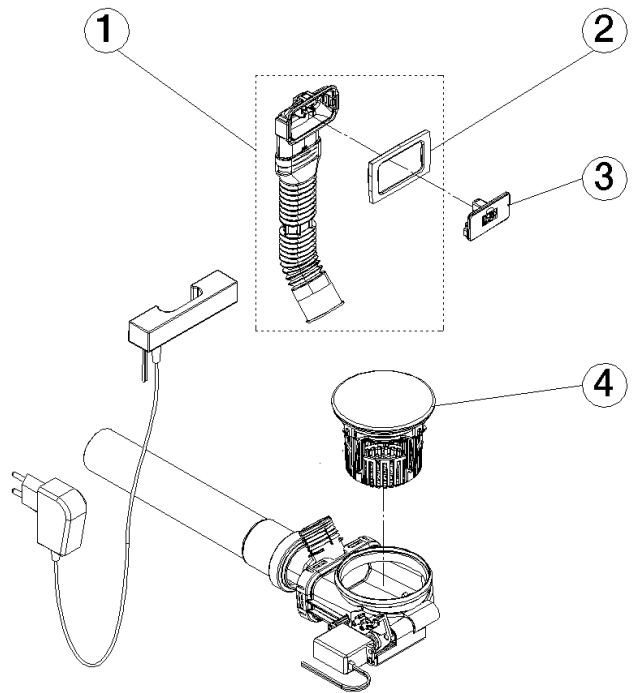




- 3 1/2" hidden drain valve with underlying strainer
- Electric drain valve with integrated button in the overflow
- Hidden, swivel overflow

Only suitable for combining with Brushed Stainless Steel kitchen sinks.





Spare parts list

| No. | Item Number | Name | Quantity used | Delivery time |
|-----|--------------------|--------------|---------------|---------------|
| 4 | 90 11 01 135 00-86 | strainer | 1.00 | 30 |
| 3 | 90 28 30 085 00-86 | cap | 1.00 | 30 |
| 2 | 90 11 01 125 00 90 | seal | 1.00 | 30 |
| 1 | 90 11 01 128 00 90 | pop-up waste | 1.00 | 30 |