

LULU Wall-mounted basin spout without pop-up waste - Chrome

13 800 710 Product version from 3/13/2017



- 200mm projection
- fixed spout
- circular, air-enriched flow
- hole diameter 40 mm
- 1/2" connection
- plug-link mounting
- max. flow 7 l/min
- lead-free
- This product can help a building meet the requirements of Green Building Rating Systems, e.g. LEED®, BREEAM®, DGNB
- WRAS

For Touchfree control please order eSet Touchfree with temperature adjustment

Recommended miscellaneous



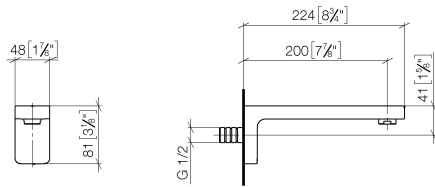
- Concealed wall elbow -**
- max. recess depth mm
 - min. recess depth mm

35 085 970 90

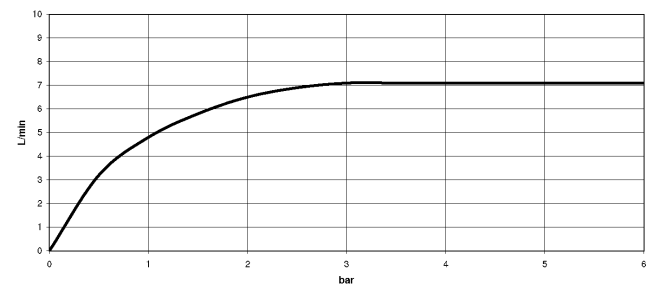
LULU Wall-mounted basin spout without pop-up waste - Chrome

13 800 710 Product version from 3/13/2017

mm [inches]



Flow rate chart



Codes & Standards

Scottish Water
Byelaws

UK Water Supply
Regulations



LULU Wall-mounted basin spout without pop-up waste - Chrome

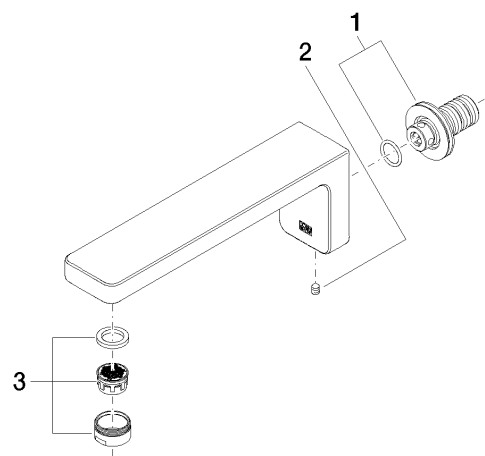
13 800 710 Product version from 3/13/2017

Certificates

WRAS_1906

LULU Wall-mounted basin spout without pop-up waste - Chrome

13 800 710 Product version from 3/13/2017



Spare parts list

No.	Item Number	Name	Quantity used	Delivery time
1	90 24 03 108 00 90	nipple set	1	2
2	90 31 11 004 00 90	pin	1	2
3	90 23 01 118 01-00	aerator	1	10