

TARA COLD WATER DISPENSER - Dark Chrome

TARA

17 872 888 Product version from 3/1/2025



- 146mm projection
- pivotable spout 360°
- laminar flow
- height of mixer 290 mm
- height up to laminar flow regulator 182 mm
- hole diameter 35 mm
- Provides filtered water
- max. flow 3.8 l/min at 3 bar flow pressure
- mechanical valve
- lead-free
- This product can help a building meet the requirements of Green Building Rating Systems, e.g. LEED®, BREEAM®, DGNB

The filter cartridge must be changed every six months. The installation instructions contain further information for guidance.

Detailed planning information and technical data can be found at www.dornbracht.com/professional

NOTE: Not compatible with reverse osmosis

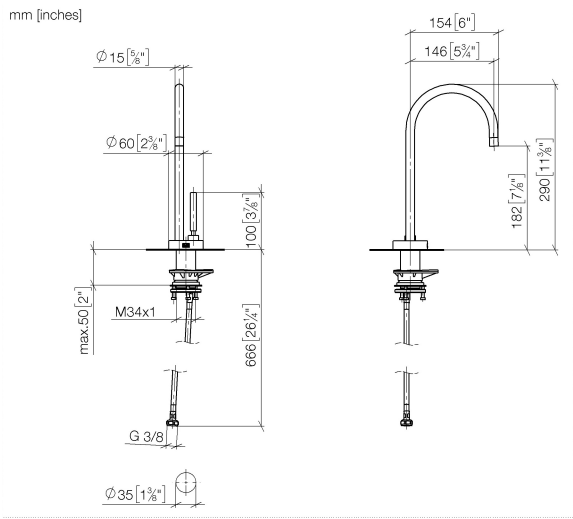
Not compatible with reverse osmosis filtration

	Dark Chrome	17 872 888-19
	Chrome	17 872 888-00
	Brushed Platinum	17 872 888-06
	Platinum	17 872 888-08
	Durabrand (23kt Gold)	17 872 888-09
	Brushed Durabrand (23kt Gold)	17 872 888-28
	Matte Black	17 872 888-33
	Brushed Bronze	17 872 888-42
	Brushed Champagne (22kt Gold)	17 872 888-46
	Champagne (22kt Gold)	17 872 888-47
	Brushed Chrome	17 872 888-93
	Brushed Dark Platinum	17 872 888-99

TARA COLD WATER DISPENSER - Dark Chrome

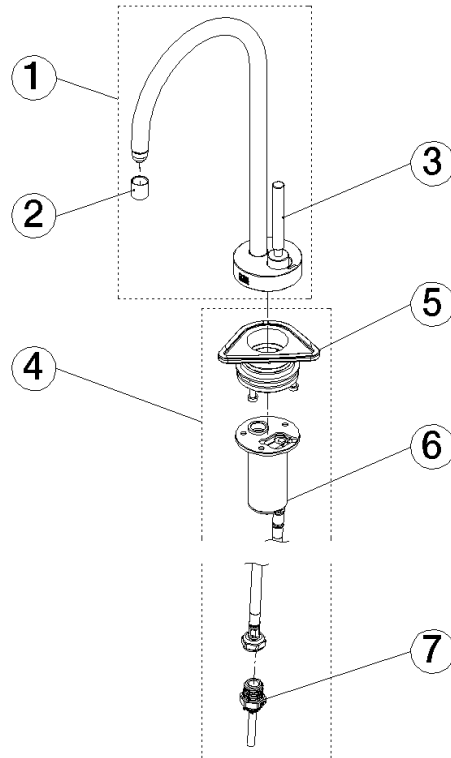
TARA

17 872 888 Product version from 3/1/2025



17 872 888 Product version from 3/1/2025

Parts for other
finishes can be found
here: [Chrome](#)



Spare parts list

No.	Item Number	Name	Quantity used	Delivery time
1	90 17 87 288 80-19	spout	1.00	20
7	90 24 04 293 02 90	adaptor	1.00	2
4	90 17 87 287 51 90	set	1.00	2
2	90 18 40 163 01-19	aerator	1.00	40
6	90 30 01 221 00 90	hose	1.00	2
5	90 30 10 057 00 90	fixing set	1.00	2
3	90 20 87 022 00-19	handle	1.00	20