

TARA Single-hole basin mixer with stand pipe without pop-up waste - Dark Chrome

22 585 892 Product version from 4/1/2024



- 201mm projection
- pivotable spout 360°
- circular, air-enriched flow
- total height 1095 - 1166 mm
- height up to aerator 1025 – 1095 mm
- rosette Ø 135 mm
- max. flow 5.7 l/min
- lead-free
- This product can help a building meet the requirements of Green Building Rating Systems, e.g. LEED®, BREEAM®, DGNB
- WRAS

| | | |
|---|--------------------------------|---------------|
|  | Dark Chrome | 22 585 892-19 |
|  | Chrome | 22 585 892-00 |
|  | Brushed Platinum | 22 585 892-06 |
|  | Platinum | 22 585 892-08 |
|  | Brushed Durabronze (23kt Gold) | 22 585 892-28 |
|  | Matte Black | 22 585 892-33 |
|  | Brushed Bronze | 22 585 892-42 |
|  | Brushed Champagne (22kt Gold) | 22 585 892-46 |
|  | Champagne (22kt Gold) | 22 585 892-47 |
|  | Brushed Chrome | 22 585 892-93 |
|  | Brushed Dark Platinum | 22 585 892-99 |

Required miscellaneous



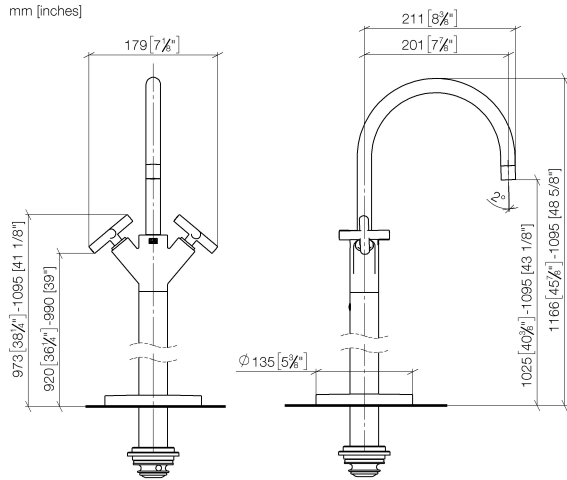
Concealed floor mounting -

35 945 970 90

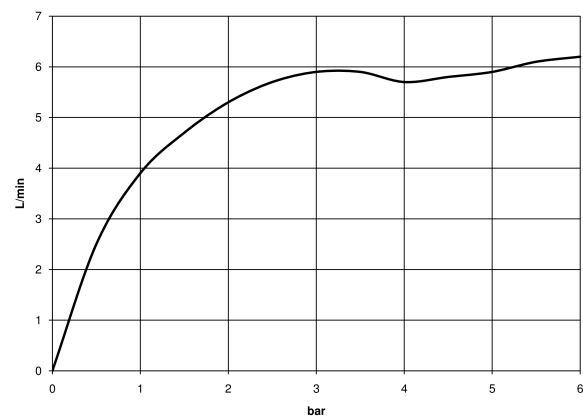
- max. recess depth mm
- min. recess depth mm

TARA Single-hole basin mixer with stand pipe without pop-up waste - Dark Chrome

22 585 892 Product version from 4/1/2024
mm [inches]



Flow rate chart



Codes & Standards

| | | | |
|----------|----------|------------------------|-----------------------------|
| DIN 4109 | ISO 3822 | Scottish Water Byelaws | UK Water Supply Regulations |
|----------|----------|------------------------|-----------------------------|

Ü-Zeichen



TARA Single-hole basin mixer with stand pipe without pop-up waste - Dark
Chrome

22 585 892 Product version from 4/1/2024

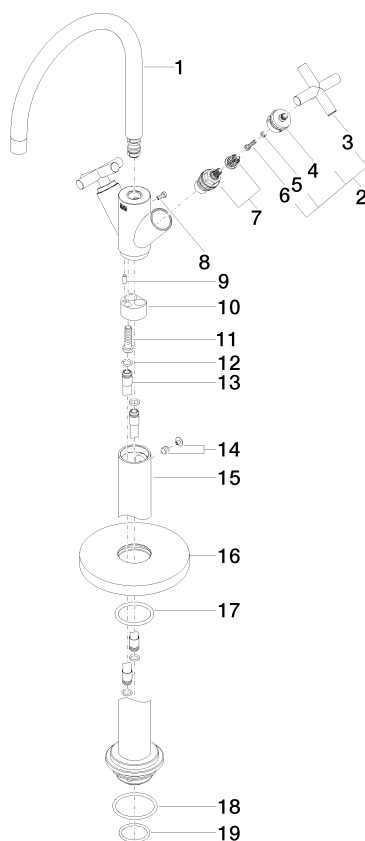
Certificates

LGA_38

WRAS_2304

TARA Single-hole basin mixer with stand pipe without pop-up waste - Dark Chrome

22 585 892 Product version from 4/1/2024



Spare parts list

| No. | Item Number | Name | Quantity used | Delivery time |
|-----|--------------------|------------|---------------|---------------|
| 1 | 90 28 22 214 02-19 | spout | 1 | 20 |
| 2 | 90 20 89 010 10-19 | handle | 2 | 20 |
| 3 | 09 20 89 010-19 | handle | 2 | 60 |
| 4 | 90 12 12 219 00-19 | base | 2 | 20 |
| 5 | 90 30 11 029 00 90 | disc | 2 | 2 |
| 6 | 90 30 30 075 00 90 | screw | 2 | 2 |
| 7 | 90 90 03 151 00 90 | top | 2 | 2 |
| 8 | 09 30 30 054 90 | screw | 1 | 2 |
| 9 | 09 31 11 040 90 | pin | 1 | 2 |
| 10 | 09 24 03 193 90 | adaptor | 1 | 2 |
| 11 | 09 30 30 047 90 | screw | 1 | 2 |
| 12 | 09 14 10 139 90 | seal | 4 | 2 |
| 13 | 04 28 22 022 10 90 | connection | 2 | 2 |
| 14 | 04 31 11 002 00 90 | pin | 1 | 2 |
| 15 | 04 28 22 028 00-19 | pipe | 1 | 60 |
| 16 | 09 27 88 011-19 | rosette | 1 | 60 |
| 17 | 90 14 10 043 00 90 | seal | 1 | 2 |
| 18 | 09 14 10 084 90 | seal | 1 | 2 |
| 19 | 09 14 10 018 90 | seal | 1 | 2 |