





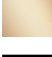


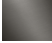
TARA Single-hole bidet mixer with pop-up waste - Brushed Platinum

TARA

24 510 892 Product version from 6/30/2009 to 5/27/2021

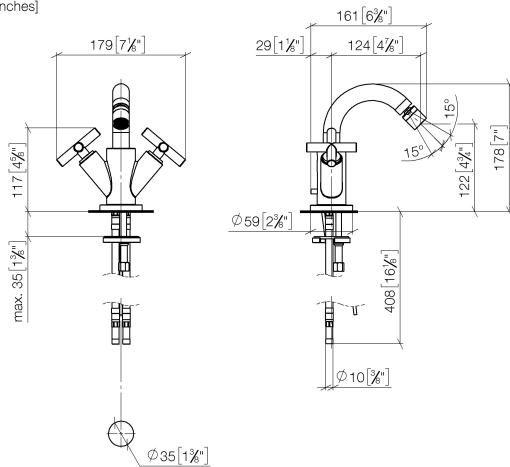


- 124mm projection
- ball-joint pivotable through 15° (in any direction)
- circular, air-enriched flow
- height of mixer 180 mm
- height up to aerator 123 mm
- hole diameter 35 mm
- rosette Ø 59 mm
- 2x screw-in M 10 x 1 pressure hose, leak-tested
- max. flow 7 l/min

	Brushed Platinum	24 510 892-06
	Chrome	24 510 892-00
	Platinum	24 510 892-08
	Dark Chrome	24 510 892-19
	Brushed Durabronze (23kt Gold)	24 510 892-28
	Matte Black	24 510 892-33
	Brushed Dark Brass	24 510 892-39
	Brushed Bronze	24 510 892-42
	Brushed Champagne (22kt Gold)	24 510 892-46
	Champagne (22kt Gold)	24 510 892-47
	Brushed Chrome	24 510 892-93
	Brushed Dark Platinum	24 510 892-99

24 510 892 Product version from 6/30/2009 to 5/27/2021

mm [inches]



Flow rate chart



Codes & Standards

ASME A112.18.1

cUPC

DIN 4109

ISO 3822

Ü-Zeichen



TARA Single-hole bidet mixer with pop-up waste - Brushed Platinum

TARA

24 510 892 Product version from 6/30/2009 to 5/27/2021

Certificates and sustainability

IAPMO_4976

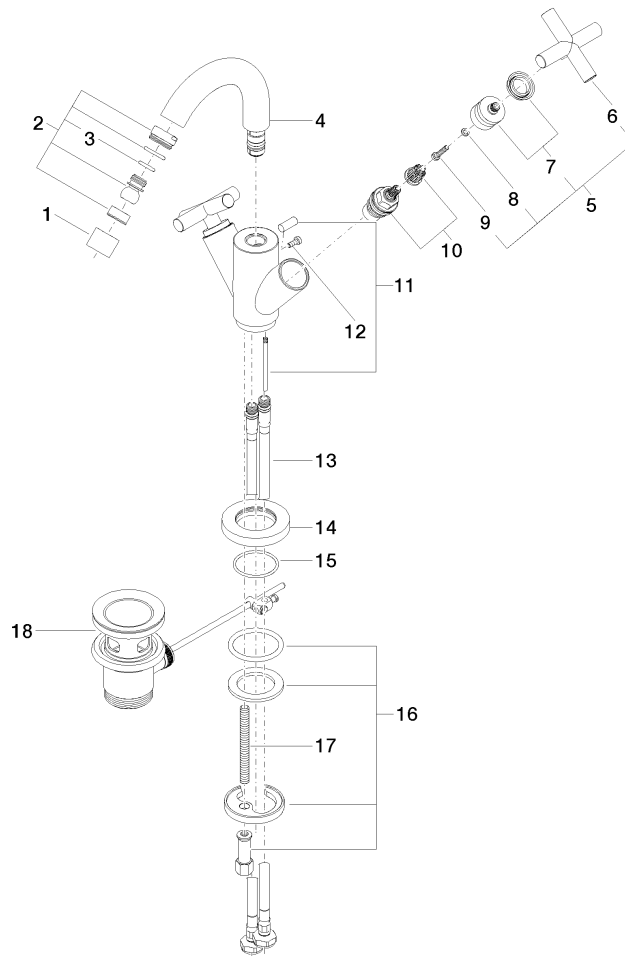
LGA_38

TARA Single-hole bidet mixer with pop-up waste - Brushed Platinum

TARA

24 510 892 Product version from 6/30/2009 to 5/27/2021

Parts for other
finishes can be found
here: [Chrome](#)



Spare parts list

No.	Item Number	Name	Quantity used	Delivery time
	17 09 31 11 011 90	pin	1.00	2
	10 90 90 03 151 00 90	top	2.00	2
	15 09 14 10 134 90	seal	1.00	2
	13 04 30 04 104 00 90	hose	2.00	2
	6 09 20 89 010-06	handle	2.00	60
	16 04 30 11 038 00 90	fixing set	1.00	2
	4 90 28 22 216 00-06	spout	1.00	-
Spare part can no longer be ordered, please order the replacement item				
	11 04 20 89 035 80-06	pull-rod	1.00	10
	14 09 28 10 132-06	ring	1.00	10
	7 90 12 12 007 00-06	base	2.00	10
	12 09 30 30 054 90	screw	1.00	2
	1 90 23 01 004 05-06	aerator	1.00	10
	2 04 21 40 007 00-06	joint	1.00	10
	18 90 11 01 001 00-06	pop-up waste	1.00	10
	5 90 20 89 010 10-06	handle	2.00	10
	9 90 30 30 075 00 90	screw	2.00	2
	8 90 30 11 029 00 90	disc	2.00	2
	3 90 14 10 011 00 90	seal	1.00	2