

## Shower set without hand shower - Brushed Chrome

IMO

26 413 979



Fits: IMO, LULU, MEM, TARA, CL.1, LISSÉ,  
VAIA, META, CYO

- slide bar
- Pipe diameter 18 mm
- gauge 853 mm
- metal shower hose 1750mm with integrated anti-twist protection
- shower hose connector 3/8"
- WRAS 2009048

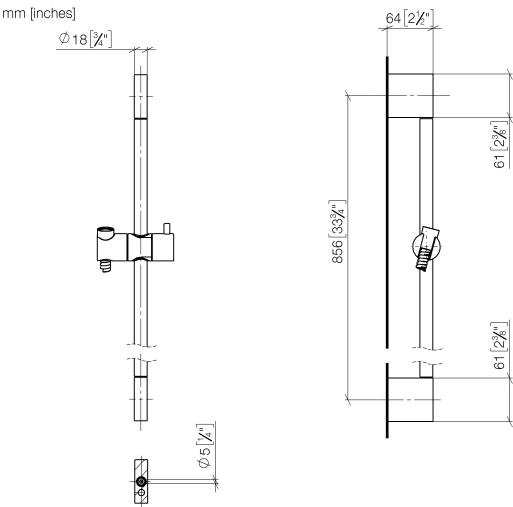
This article does not include a hand shower!

|  |                                |               |
|--|--------------------------------|---------------|
|    | Brushed Chrome                 | 26 413 979-93 |
|    | Chrome                         | 26 413 979-00 |
|    | Brushed Platinum               | 26 413 979-06 |
|    | Platinum                       | 26 413 979-08 |
|    | Dark Chrome                    | 26 413 979-19 |
|    | Light Gold                     | 26 413 979-26 |
|    | Brushed Light Gold             | 26 413 979-27 |
|    | Brushed Durabronze (23kt Gold) | 26 413 979-28 |
|    | Matte Black                    | 26 413 979-33 |
|    | Brushed Bronze                 | 26 413 979-42 |
|   | Brushed Champagne (22kt Gold)  | 26 413 979-46 |
|  | Champagne (22kt Gold)          | 26 413 979-47 |
|  | Brushed Dark Platinum          | 26 413 979-99 |

Shower set without hand shower - Brushed Chrome

IMO

26 413 979



Codes & Standards

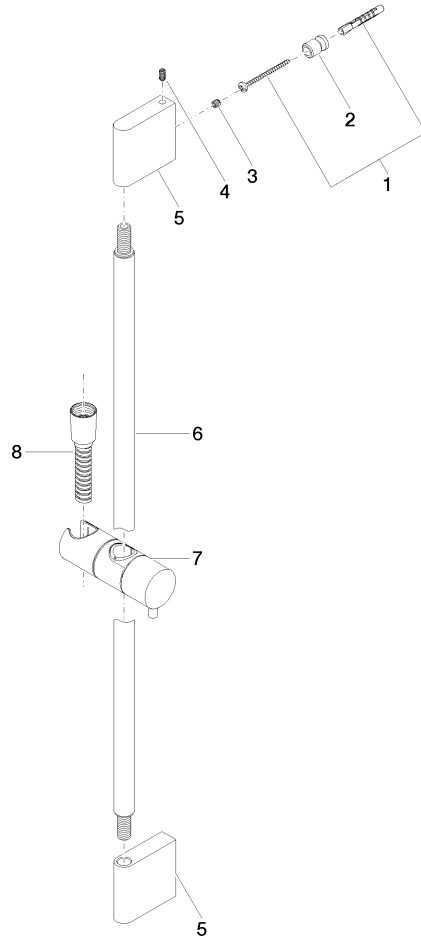
|                |      |                           |                                |
|----------------|------|---------------------------|--------------------------------|
| ASME A112.18.1 | cUPC | Scottish Water<br>Byelaws | UK Water Supply<br>Regulations |
| XP P 41-280    |      |                           |                                |

Certificates

|            |           |               |
|------------|-----------|---------------|
| IAPMO_4976 | WRAS_2009 | ACS_20 ACC LY |
|------------|-----------|---------------|

**Product version from 10/1/2023**

Parts for other  
finishes can be found  
here: [Chrome](#)





## Shower set without hand shower - Brushed Chrome

IMO

26 413 979

### Spare parts list

#### Product version from 10/1/2023

| No. | Item Number        | Name       | Quantity used | Delivery time |
|-----|--------------------|------------|---------------|---------------|
|     | 05 17 20 726 02 90 | fixing set | 13            | 2             |