

## TARA Showerpipe without hand shower FlowReduce 220 mm - Brushed Durabronze (23kt Gold)

TARA

26 633 892 Product version from 4/1/2024



### Rain shower:

- rain shower Ø 220 mm
- overhead shower: rain flow
- max. rainshower flow 7 l/min
- Function from: l/min

### hand shower:

### Control element:

- rotary diverter for fixed-riser shower/hand shower
- 1500 mm metal shower hose

### Technical data:

- shower with fixed riser projection 420mm
- height of fittings up to rain shower (bottom edge) 1007mm
- height of fittings up to top edge of elbow 1167mm
- rosette for wall mounting Ø 57mm
- rosette for shower holder Ø 55mm
- rosette for shower mixer Ø 65mm
- Pipe diameter 20 mm
- gauge 150 mm - 13 mm
- 1/2" connection

### Notes:

- This product can help a building meet the requirements of Green Building Rating Systems, e.g. LEED®, BREEAM®, DGNB

This article does not include a hand shower!

Intrinsic protection against back flow.

|   |                                |               |
|---|--------------------------------|---------------|
|    | Brushed Durabronze (23kt Gold) | 26 633 892-28 |
|    | Chrome                         | 26 633 892-00 |
|    | Brushed Platinum               | 26 633 892-06 |
|    | Platinum                       | 26 633 892-08 |
|    | Dark Chrome                    | 26 633 892-19 |
|    | Matte Black                    | 26 633 892-33 |
|    | Brushed Dark Brass             | 26 633 892-39 |
|    | Brushed Bronze                 | 26 633 892-42 |
|    | Brushed Champagne (22kt Gold)  | 26 633 892-46 |
|   | Champagne (22kt Gold)          | 26 633 892-47 |
|  | Brushed Chrome                 | 26 633 892-93 |
|  | Brushed Dark Platinum          | 26 633 892-99 |

TARA Showerpipe without hand shower FlowReduce 220 mm - Brushed Durabross (23kt Gold)

TARA

26 633 892    Product version from 4/1/2024

Required miscellaneous

|   |  |               |
|---|--|---------------|
|  | <b>Hand shower - Brushed Durabross (23kt Gold)</b> | 28 017 979-28 |
|---|--|---------------|


Required miscellaneous

|   |  |               |
|---|--|---------------|
|  | <b>Hand shower - Brushed Durabross (23kt Gold)</b> | 28 016 979-28 |
|---|--|---------------|

Required miscellaneous

|   |  |               |
|---|--|---------------|
|  | <b>Hand shower - Brushed Durabross (23kt Gold)</b> | 28 015 979-28 |
|---|--|---------------|

Required miscellaneous

|   |   |                       |
|---|---|-----------------------|
|  | <b>Hand shower FlowReduce - Brushed Durabross (23kt Gold)</b> | 28 012 979-28<br>0010 |
|---|---|-----------------------|

Required miscellaneous

|   |  |                       |
|---|--|-----------------------|
|  | <b>SERIES-VARIOUS Hand shower FlowReduce - Brushed Durabross (23kt Gold)</b> | 28 027 979-28<br>0010 |
|---|--|-----------------------|


Required miscellaneous

|   |  |                       |
|---|--|-----------------------|
|  | <b>SERIES-VARIOUS Hand shower FlowReduce - Brushed Durabross (23kt Gold)</b> | 28 025 979-28<br>0010 |
|---|--|-----------------------|

Required miscellaneous

|   |  |               |
|---|--|---------------|
|  | <b>Hand shower - Brushed Durabross (23kt Gold)</b> | 28 018 979-28 |
|---|--|---------------|


Required miscellaneous

|   |   |                       |
|---|---|-----------------------|
|  | <b>Hand shower FlowReduce - Brushed Durabross (23kt Gold)</b> | 28 016 979-28<br>0010 |
|---|---|-----------------------|

Required miscellaneous

|   |  |               |
|---|--|---------------|
|  | <b>Hand shower - Brushed Durabross (23kt Gold)</b> | 28 012 979-28 |
|---|--|---------------|

Required miscellaneous

|   |   |                       |
|---|---|-----------------------|
|  | <b>Hand shower FlowReduce - Brushed Durabross (23kt Gold)</b> | 28 018 979-28<br>0010 |
|---|---|-----------------------|

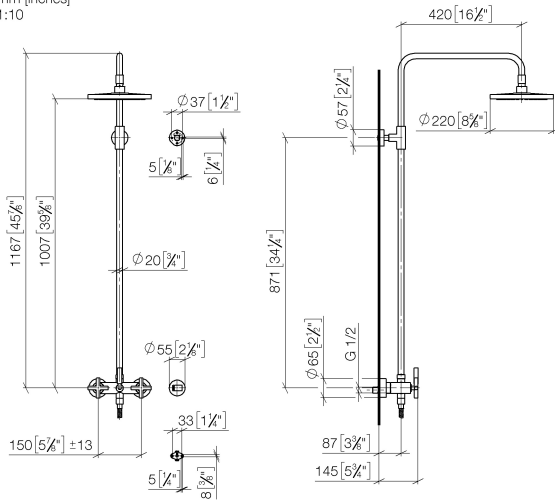
Required miscellaneous

|   |  |                       |
|---|--|-----------------------|
|  | <b>SERIES-VARIOUS Hand shower FlowReduce - Brushed Durabross (23kt Gold)</b> | 28 029 979-28<br>0010 |
|---|--|-----------------------|

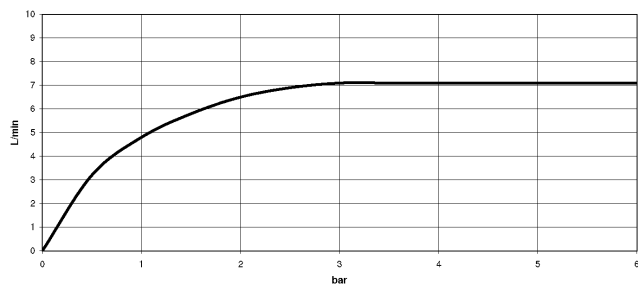
# TARA Showerpipe without hand shower FlowReduce 220 mm - Brushed Durabronz (23kt Gold)

TARA

26 633 892 Product version from 4/1/2024  
mm [inches]  
1:10



Flow rate chart



## Codes & Standards

DIN 4109

EN 1717

ISO 3822

Scottish Water  
Byelaws

UK Water Supply  
Regulations

Ü-Zeichen



## TARA Showerpipe without hand shower FlowReduce 220 mm - Brushed Durabrass (23kt Gold)

---

TARA

26 633 892 Product version from 4/1/2024

Certificates and sustainability

---

Belgaqua\_21-023-2 WRAS\_2204

LGA\_38

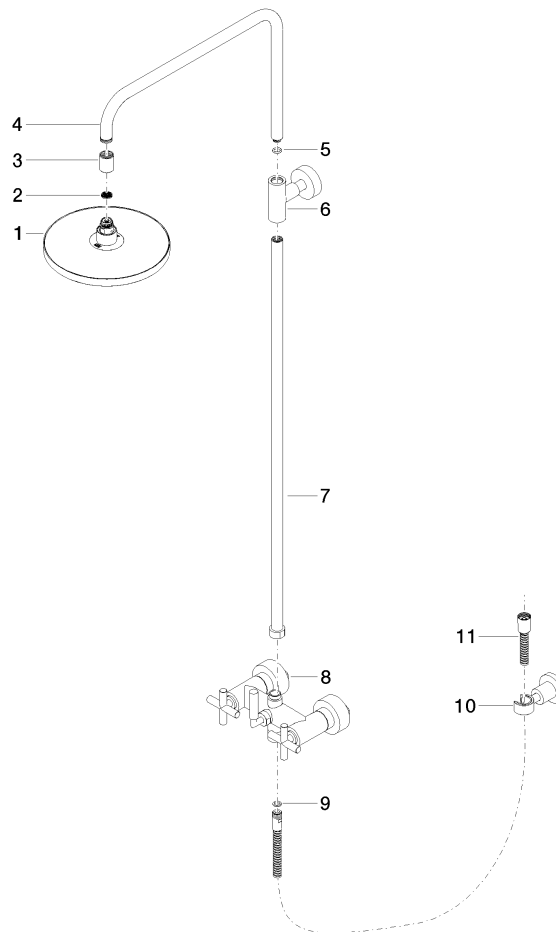


## TARA Showerpipe without hand shower FlowReduce 220 mm - Brushed Durabronz (23kt Gold)

TARA

26 633 892 Product version from 4/1/2024

Parts for other  
finishes can be found  
here: [Chrome](#)



### Spare parts list

| No. | Item Number        | Name  | Quantity used | Delivery time |
|-----|--------------------|---|---------------|---------------|
| 8   | 04 17 10 020 01-28 | fitting   | 1.00          | 20            |
| 6   | 90 17 11 037 00-28 | holder  | 1.00          | 20            |
| 7   | 90 28 22 096 00-28 | pipe  | 1.00          | 20            |
| 4   | 04 28 22 101 20-28 | spout   | 1.00          | 20            |
| 10  | 28 050 892-28      | TARA Wall bracket - Brushed Durabronz (23kt Gold)                       | 1.00          | 20            |
| 3   | 09 24 03 177 20-28 | adaptor   | 1.00          | 20            |
| 2   | 09 23 01 039 90    | sieve   | 1.00          | 2             |
| 11  | 28 304 970-28      | Metal shower hose 1/2" x 3/8" x 1500 mm - Brushed Durabronz (23kt Gold) | 1.00          | 20            |
| 9   | 90 14 20 026 00 90 | seal  | 1.00          | 2             |
| 5   | 90 14 10 011 00 90 | seal  | 1.00          | 2             |
| 1   | 90 12 05 092 20-28 | shower  | 1.00          | 20            |