

WATER TUBE Kneipp wall elbow with hose holder with individual rosettes -  
Matte Black

SERIES SPECIFIC

27 821 979

Product version from 3/6/2023



- LAMINAR FLOW, max. flow rate 15 l/min (at 3 bar)
- with volume control
- rosette 60 x 60 mm
- holder for Kneipp hose
- 1/2" wall elbow
- without hose

Intrinsic protection against back flow.

Product change as of 1.4.2023: max. flow 15 l/min

	Matte Black	27 821 979-33
	Chrome	27 821 979-00
	Brushed Platinum	27 821 979-06
	Platinum	27 821 979-08
	Dark Chrome	27 821 979-19
	Brushed Light Gold	27 821 979-27
	Brushed Durabrass (23kt Gold)	27 821 979-28
	Brushed Champagne (22kt Gold)	27 821 979-46
	Champagne (22kt Gold)	27 821 979-47
	Brushed Chrome	27 821 979-93
	Brushed Dark Platinum	27 821 979-99

## WATER TUBE Kneipp wall elbow with hose holder with individual rosettes - Matte Black

SERIES SPECIFIC

27 821 979 Product version from 3/6/2023  
mm [inches]



### Flow rate chart



### Codes & Standards

EN 1717



## WATER TUBE Kneipp wall elbow with hose holder with individual rosettes - Matte Black

SERIES SPECIFIC

---

27 821 979 Product version from 3/6/2023

Certificates and sustainability

---

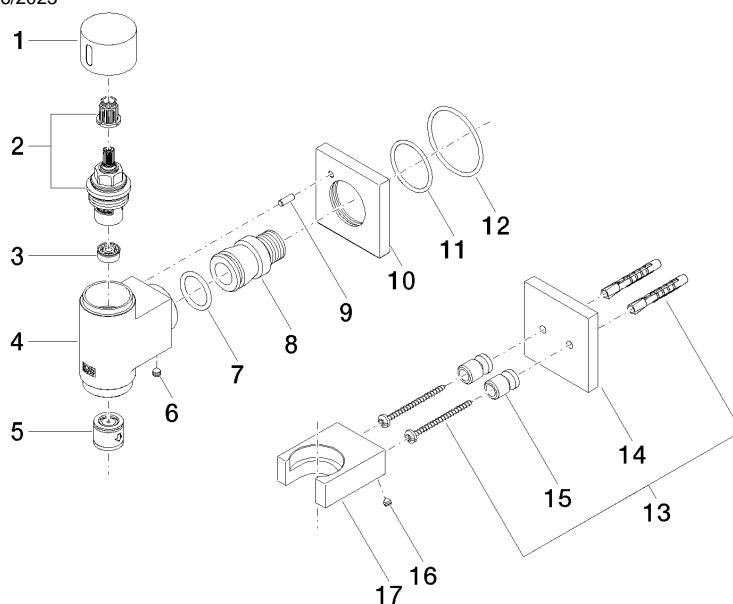
Belgaqua\_22\_280\_2

# WATER TUBE Kneipp wall elbow with hose holder with individual rosettes - Matte Black

SERIES SPECIFIC

27 821 979 Product version from 3/6/2023

Parts for other  
finishes can be found  
here: [Chrome](#)



## Spare parts list

No.	Item Number	Name	Quantity used	Delivery time
2	90 90 03 145 00 90	top	1.00	2
15	08 17 20 726 90	holder	2.00	2
16	09 31 11 148 90	pin	2.00	2
5	90 23 01 045 00 90	back-flow preventer	1.00	2
17	09 17 20 023-33	holder	1.00	30
8	09 24 03 151 90	nipple	1.00	2
3	90 23 01 146 00 90	flow reducer	1.00	2
7	09 14 10 081 90	seal	1.00	2
4	09 11 03 135-33	connection	1.00	60
12	90 14 10 049 00 90	seal	1.00	2
10	09 27 97 021-33	rosette	1.00	60
1	09 20 97 021-33	handle	1.00	60
13	05 30 31 025 00 90	fixing set	1.00	2
6	90 31 11 112 00 90	pin	1.00	2
9	09 31 11 040 90	pin	1.00	2
11	09 14 10 119 90	seal	1.00	2
14	09 27 97 022-33	rosette	1.00	60