



WATER TUBE Kneipp wall elbow with hose holder with individual rosettes -  
Brushed Dark Platinum

SERIES SPECIFIC

<div> <div>27 821 979</div> <div>Product version up to 3/12/2018</div> <div>  </div> </div>	<div> <ul style="list-style-type: none"> <li>• LAMINAR FLOW, max. flow rate 15 l/min (at 3 bar)</li> <li>• with volume control</li> <li>• rosette 60 x 60 mm</li> <li>• holder for Kneipp hose</li> <li>• 1/2" wall elbow</li> <li>• without hose</li> </ul> <div>Intrinsic protection against back flow.</div> <div>Product change as of 1.4.2023: max. flow 15 l/min</div> </div>	<div> <div>  <div>Brushed Dark Platinum</div> </div> <div>27 821 979-99</div> </div>

Required miscellaneous

<div>  </div>	<div> <div>WATER TUBE Kneipp hose black</div> <div>2000 mm - Brushed Dark Platinum</div> <ul style="list-style-type: none"> <li>•with holding ring</li> <li>•hose nozzle with sleeve M33</li> </ul> </div>	<div>28 286 979-99</div>

Required miscellaneous

<div>  </div>	<div> <div>WATER TUBE Kneipp hose white</div> <div>2000 mm - Brushed Dark Platinum</div> <ul style="list-style-type: none"> <li>•with holding ring</li> <li>•hose nozzle with sleeve M33</li> </ul> </div>	<div>28 285 979-99</div>

## WATER TUBE Kneipp wall elbow with hose holder with individual rosettes - Brushed Dark Platinum

SERIES SPECIFIC

27 821 979 Product version up to 3/12/2018  
mm [inches]



### Flow rate chart



### Codes & Standards

EN 1717



## WATER TUBE Kneipp wall elbow with hose holder with individual rosettes - Brushed Dark Platinum

---

SERIES SPECIFIC

27 821 979 Product version up to 3/12/2018

Certificates and sustainability

---

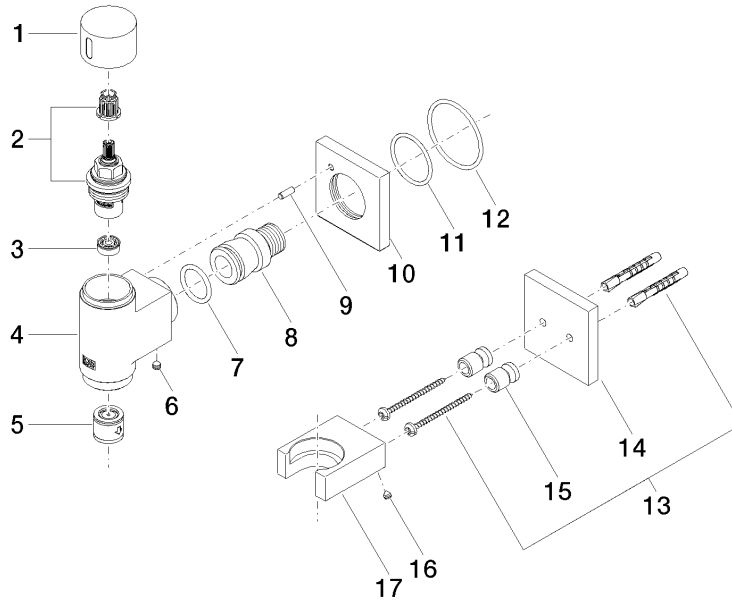
Belgaqua\_22\_280\_2

## WATER TUBE Kneipp wall elbow with hose holder with individual rosettes - Brushed Dark Platinum

SERIES SPECIFIC

27 821 979 Product version up to 3/12/2018

Parts for other  
finishes can be found  
here: [Chrome](#)



### Spare parts list

No.	Item Number	Name	Quantity used	Delivery time
	4 09 11 03 135-99	connection	1.00	60
	1 09 20 97 021-99	handle	1.00	60
	7 09 14 10 081 90	seal	1.00	2
	15 08 17 20 726 90	holder	2.00	2
	6 90 31 11 112 00 90	pin	1.00	2
	5 90 23 01 045 00 90	back-flow preventer	1.00	2
	13 05 30 31 025 00 90	fixing set	1.00	2
	11 09 14 10 119 90	seal	1.00	2
	10 09 27 97 021-99	rosette	1.00	60
	2 90 90 03 145 00 90	top	1.00	2
	14 09 27 97 022-99	rosette	1.00	60
	16 09 31 11 148 90	pin	2.00	2
	8 09 24 03 151 90	nipple	1.00	2
	12 90 14 10 049 00 90	seal	1.00	2
	17 09 17 20 023-99	holder	1.00	20
	3 90 23 01 146 00 90	flow reducer	1.00	2
	9 09 31 11 040 90	pin	1.00	2