

WATER TUBE Kneipp wall elbow with hose holder with individual rosettes - Brushed Durabass (23kt Gold)

SERIES-VARIOUS

27 823 979 Product version from 10/1/2023



- LAMINAR FLOW, max. flow rate 15 l/min (at 3 bar)
- with volume control
- rosette Ø 60 mm
- holder for Kneipp hose
- 1/2" wall elbow
- without hose

Intrinsic protection against back flow.

Product change as of 1.4.2023: max. flow 15 l/min

	Brushed Durabass (23kt Gold)	27 823 979-28
	Chrome	27 823 979-00
	Brushed Platinum	27 823 979-06
	Platinum	27 823 979-08
	Dark Chrome	27 823 979-19
	Light Gold	27 823 979-26
	Brushed Light Gold	27 823 979-27
	Matte Black	27 823 979-33
	Brushed Bronze	27 823 979-42
	Brushed Champagne (22kt Gold)	27 823 979-46
	Champagne (22kt Gold)	27 823 979-47
	Brushed Chrome	27 823 979-93
	Brushed Dark Platinum	27 823 979-99

Recommended miscellaneous



- Concealed wall elbow -** 35 085 970 90
- min. recess depth 90 mm
 - max. recess depth 163 mm

Required miscellaneous



- WATER TUBE Kneipp hose black 2000 mm - Brushed Durabass (23kt Gold)** 28 286 979-28
- hose nozzle with sleeve M33
 - with holding ring

Required miscellaneous

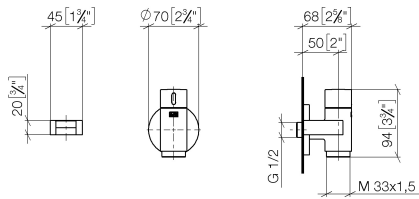


- WATER TUBE Kneipp hose white 2000 mm - Brushed Durabass (23kt Gold)** 28 285 979-28
- hose nozzle with sleeve M33
 - with holding ring

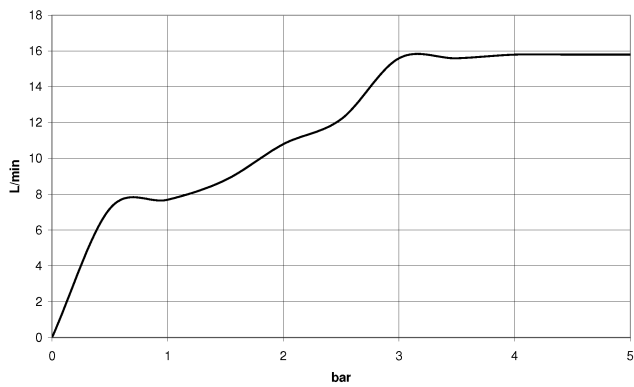
WATER TUBE Kneipp wall elbow with hose holder with individual rosettes - Brushed Durabron (23kt Gold)

SERIES-VARIOUS

27 823 979 Product version from 10/1/2023
mm [inches]



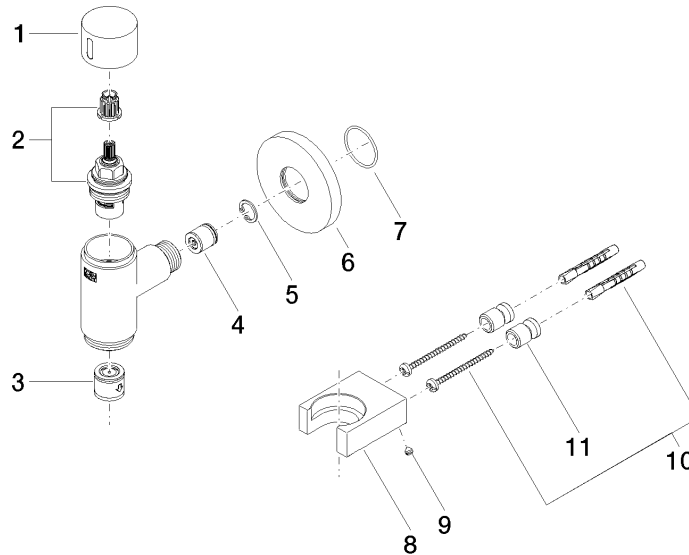
Flow rate chart



WATER TUBE Kneipp wall elbow with hose holder with individual rosettes - Brushed Durabronze (23kt Gold)

SERIES-VARIOUS

27 823 979 Product version from 10/1/2023



Spare parts list

No.	Item Number	Name	Quantity used	Delivery time
5	09 16 01 014 90	ring	1.00	2
7	09 14 10 135 90	seal	1.00	2
9	09 31 11 148 90	pin	1.00	2
4	09 23 01 046 90	back-flow preventer	1.00	2
10	05 17 20 726 02 90	fixing set	1.00	2
8	09 17 20 023-28	holder	1.00	20
6	09 27 97 020-28	rosette	1.00	20
2	90 90 03 145 00 90	top	1.00	2
1	09 20 97 021-28	handle	1.00	20
11	08 17 20 726 90	holder	1.00	2
3	90 23 01 045 00 90	back-flow preventer	1.00	2