








28 286 979

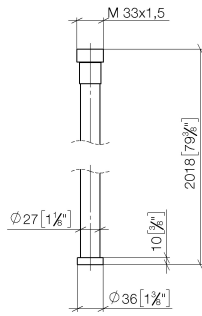


- hose nozzle with sleeve M33
- with holding ring

	Chrome	28 286 979-00
	Brushed Platinum	28 286 979-06
	Platinum	28 286 979-08
	Dark Chrome	28 286 979-19
	Brushed Durabrass (23kt Gold)	28 286 979-28
	Matte Black	28 286 979-33
	Brushed Champagne (22kt Gold)	28 286 979-46
	Champagne (22kt Gold)	28 286 979-47
	Brushed Chrome	28 286 979-93
	Brushed Dark Platinum	28 286 979-99

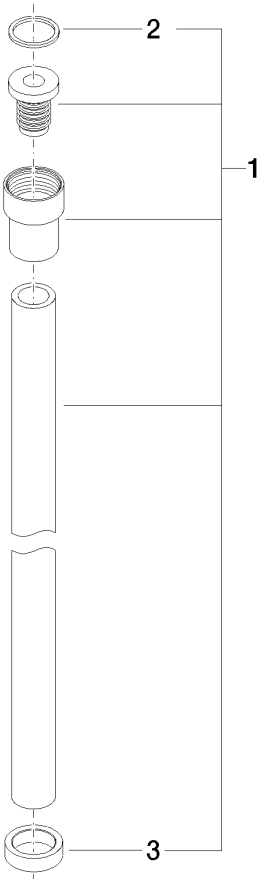
28 286 979

mm [inches]



Flow rate chart





Spare parts list

No.	Item Number	Name	Quantity used	Delivery time
2	09 14 20 003 90	seal	1.00	2
3	09 28 10 116-13	ring	1.00	30