



LULU Body spray without volume control FlowReduce - Chrome

LULU

28 518 710



- spray head Ø 55mm
- ball-joint pivotable through 25° (in any direction)
- rain flow
- anti-scale system
- rosette 78 x 55 mm
- 1/2" connection
- max. flow 5 l/min
- This product can help a building meet the requirements of Green Building Rating Systems, e.g. LEED®, BREEAM®, DGNB

	Chrome	28 518 710-00
	Brushed Platinum	28 518 710-06

Recommended miscellaneous

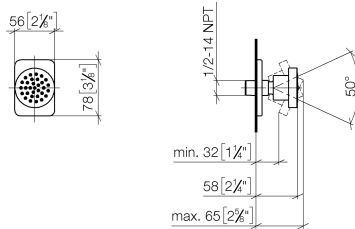


- Concealed wall elbow -**

35 085 970 90
- max. recess depth 163 mm
 - min. recess depth 90 mm

28 518 710

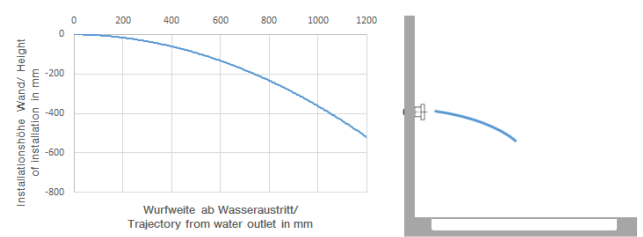
mm [inches]



Flow rate chart



Trajectory diagram



Codes & Standards

ASME A112.18.1

cUPC

DIN 4109

ISO 3822

Ü-Zeichen



LULU Body spray without volume control FlowReduce - Chrome

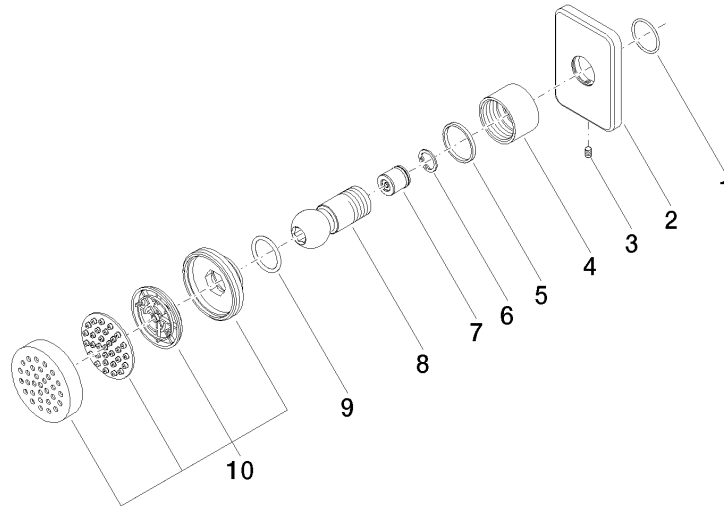
LULU

28 518 710

Certificates

LGA_38

IAPMO_4976





LULU Body spray without volume control FlowReduce - Chrome

LULU

28 518 710

Spare parts list

No.	Item Number	Name	Quantity used	Delivery time
	09 14 10 098 90	seal	10	2