

## Body spray without volume control FlowReduce - Brushed Light Gold

IMO

28 518 782



Fits: IMO, MEM, CL.1, CYO

- spray head Ø 55mm
- ball-joint pivotable through 25° (in any direction)
- rain flow
- anti-scale system
- rosette 60 x 60 mm
- 1/2" connection
- max. flow 5 l/min
- WRAS 1809018
- This product can help a building meet the requirements of Green Building Rating Systems, e.g. LEED®, BREEAM®, DGNB

|  |                                |               |
|--|--------------------------------|---------------|
|    | Brushed Light Gold             | 28 518 782-27 |
|    | Chrome                         | 28 518 782-00 |
|    | Brushed Platinum               | 28 518 782-06 |
|    | Platinum                       | 28 518 782-08 |
|    | Dark Chrome                    | 28 518 782-19 |
|    | Brushed Durabronze (23kt Gold) | 28 518 782-28 |
|    | Matte Black                    | 28 518 782-33 |
|    | Brushed Champagne (22kt Gold)  | 28 518 782-46 |
|    | Champagne (22kt Gold)          | 28 518 782-47 |
|   | Brushed Chrome                 | 28 518 782-93 |
|  | Brushed Dark Platinum          | 28 518 782-99 |

### Recommended miscellaneous

#### Concealed wall elbow -

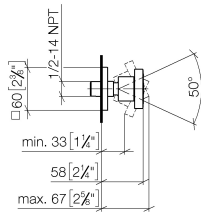
35 085 970 90



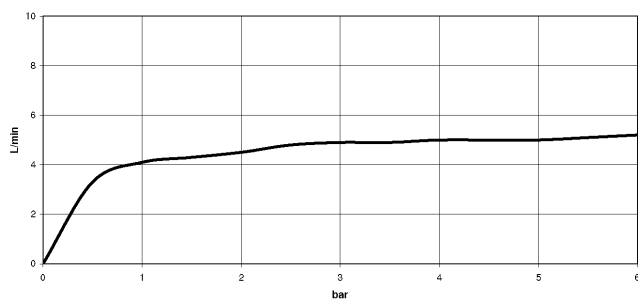
- min. recess depth 90 mm
- max. recess depth 163 mm

28 518 782

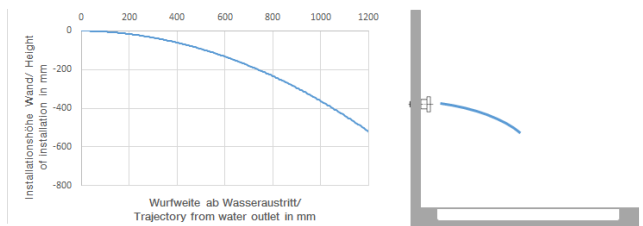
mm [inches]



Flow rate chart



Trajectory diagram



Codes & Standards

DIN 4109

ISO 3822

Ü-Zeichen



## Body spray without volume control FlowReduce - Brushed Light Gold

---

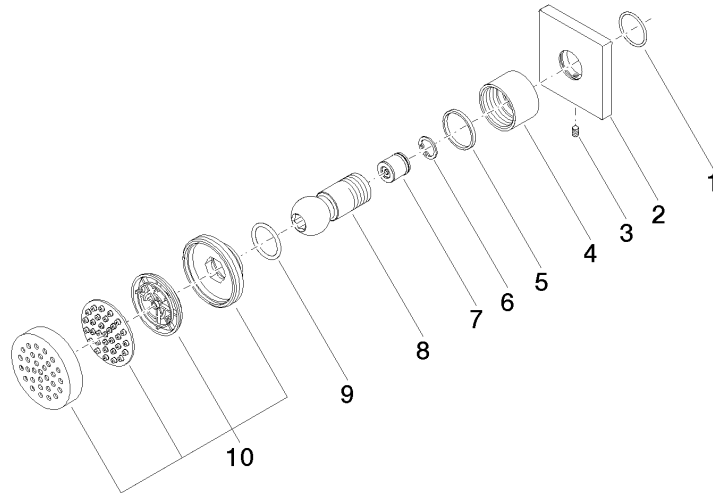
IMO

28 518 782

### Certificates

---

LGA\_38





## Spare parts list