

## Body spray without volume control FlowReduce - Matte Black

IMO

28 518 782



Fits: IMO, MEM, CL.1, CYO

- spray head Ø 55mm
- ball-joint pivotable through 25° (in any direction)
- rain flow
- anti-scale system
- rosette 60 x 60 mm
- 1/2" connection
- max. flow 5 l/min
- WRAS 1809018
- This product can help a building meet the requirements of Green Building Rating Systems, e.g. LEED®, BREEAM®, DGNB

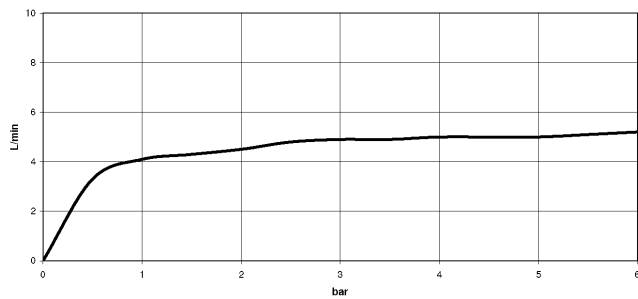
|   |                               |               |
|---|-------------------------------|---------------|
|   | Matte Black                   | 28 518 782-33 |
|   | Chrome                        | 28 518 782-00 |
|   | Brushed Platinum              | 28 518 782-06 |
|   | Platinum                      | 28 518 782-08 |
|   | Dark Chrome                   | 28 518 782-19 |
|   | Brushed Light Gold            | 28 518 782-27 |
|   | Brushed Durabrass (23kt Gold) | 28 518 782-28 |
|   | Brushed Champagne (22kt Gold) | 28 518 782-46 |
|   | Champagne (22kt Gold)         | 28 518 782-47 |
|   | Brushed Chrome                | 28 518 782-93 |
|  | Brushed Dark Platinum         | 28 518 782-99 |

28 518 782

mm [inches]



Flow rate chart



Trajectory diagram



## Codes & Standards

ASME A112.18.1

cUPC

DIN 4109

ISO 3822

## Ü-Zeichen



## Body spray without volume control FlowReduce - Matte Black

---

IMO

28 518 782

### Certificates

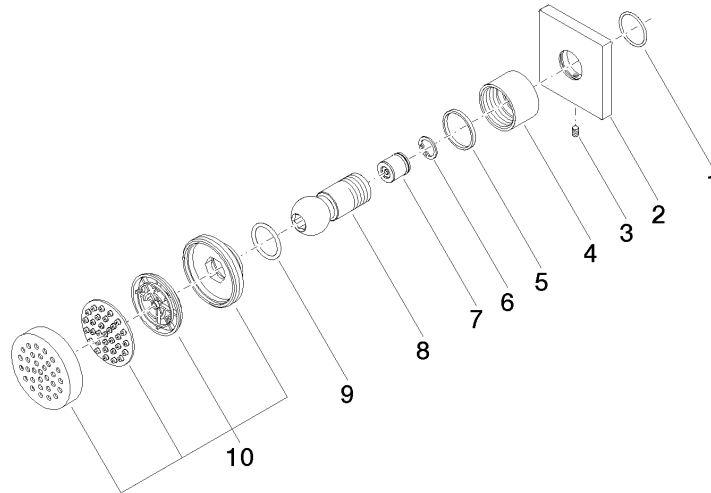
---

LGA\_38

IAPMO\_4976

28 518 782

Parts for other  
finishes can be found  
here: [Chrome](#)





## Body spray without volume control FlowReduce - Matte Black

IMO

28 518 782

### Spare parts list