

Body spray without volume control FlowReduce - Brushed Chrome




TARA

28 518 979



- spray head Ø 55mm
- ball-joint pivotable through 25° (in any direction)
- HORIZONTAL RAIN, max. flow rate 5 l/min (at 3 bar)
- with anti-scale system
- rosette Ø 55 mm
- 1/2" connection
- This product can help a building meet the requirements of Green Building Rating Systems, e.g. LEED®, BREEAM®, DGNB

Fits: TARA, LISSÉ, VAIA, META

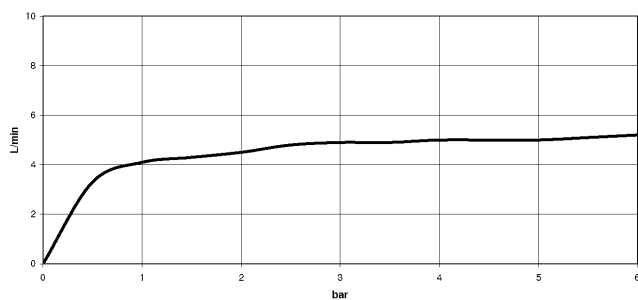
	Brushed Chrome	28 518 979-93
	Chrome	28 518 979-00
	Brushed Platinum	28 518 979-06
	Platinum	28 518 979-08
	Durabrand (23kt Gold)	28 518 979-09
	Dark Chrome	28 518 979-19
	Light Gold	28 518 979-26
	Brushed Light Gold	28 518 979-27
	Brushed Durabrand (23kt Gold)	28 518 979-28
	Matte Black	28 518 979-33
	Brushed Bronze	28 518 979-42
	Brushed Champagne (22kt Gold)	28 518 979-46
	Champagne (22kt Gold)	28 518 979-47
	Brushed Dark Platinum	28 518 979-99

28 518 979

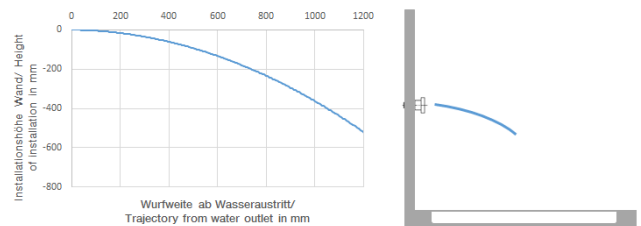
mm [inches]



Flow rate chart



Trajectory diagram



Codes & Standards

ASME A112.18.1

cUPC

DIN 4109

ISO 3822

Ü-Zeichen



Body spray without volume control FlowReduce - Brushed Chrome

TARA

28 518 979

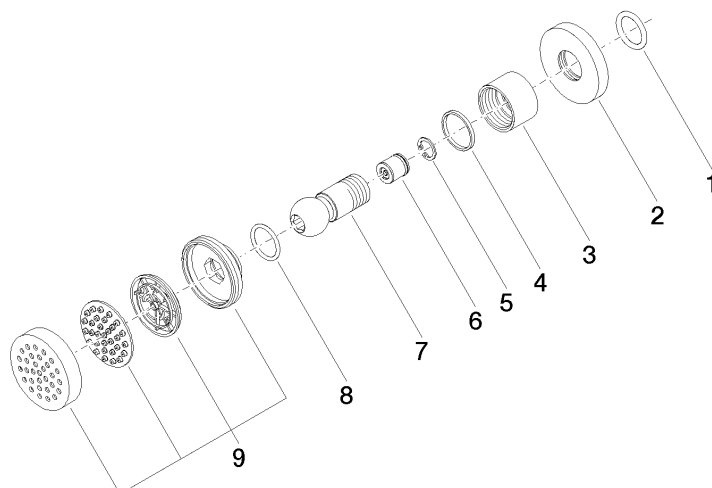
Certificates

IAPMO_4976

LGA_38

Product version from 4/1/2024

Parts for other
finishes can be found
here: [Chrome](#)





Body spray without volume control FlowReduce - Brushed Chrome

TARA

28 518 979

Spare parts list

Product version from 4/1/2024

No.	Item Number	Name	Quantity used	Delivery time
	90 14 10 026 00 90	seal	9	2