

## VAIA Wall-mounted valve cold water without pop-up waste - Brushed Durabronze (23kt Gold)

VAIA

30 010 809



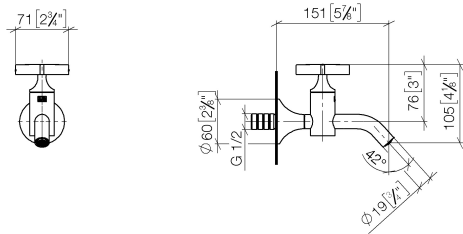
- 151mm projection
- fixed spout
- adapter with male thread 3/4"
- hole diameter 35 mm
- rosette Ø 60 mm
- max. flow 5.7 l/min
- lead-free
- This product can help a building meet the requirements of Green Building Rating Systems, e.g. LEED®, BREEAM®, DGNB
- WRAS 240102003

	Brushed Durabronze (23kt Gold)	30 010 809-28
	Chrome	30 010 809-00
	Brushed Platinum	30 010 809-06
	Platinum	30 010 809-08
	Dark Chrome	30 010 809-19
	Brushed Bronze	30 010 809-42
	Brushed Champagne (22kt Gold)	30 010 809-46
	Champagne (22kt Gold)	30 010 809-47
	Brushed Dark Platinum	30 010 809-99

VAIA Wall-mounted valve cold water without pop-up waste - Brushed  
Durabross (23kt Gold)

VAIA

30 010 809  
mm [inches]



Flow rate chart



Codes & Standards

DIN 4109	ISO 3822	Scottish Water Byelaws	UK Water Supply Regulations
----------	----------	---------------------------	--------------------------------

Ü-Zeichen



VAIA Wall-mounted valve cold water without pop-up waste - Brushed  
Durabross (23kt Gold)

---

VAIA

30 010 809

Certificates

---

WRAS\_240102

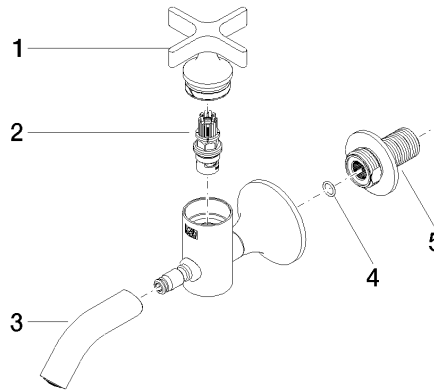
LGA\_18

**VAIA Wall-mounted valve cold water without pop-up waste - Brushed  
Durabronz (23kt Gold)**

VAIA

30 010 809

Parts for other  
finishes can be found  
here: [Chrome](#)





VAIA Wall-mounted valve cold water without pop-up waste - Brushed  
Durabross (23kt Gold)

VAIA

30 010 809

Spare parts list

No.	Item Number	Name	Quantity used	Delivery time
	90 20 66 025 00-28	handle	5	20