

## LOT Two-hole mixer with individual rosettes - Chrome

LOT

32 800 680



- 235mm projection
  - pivotable spout 360°
  - air-enriched flow
  - height of mixer 345 mm
  - height up to aerator 319 mm
  - individual rosette 55 x 55 mm
  - hole diameter spout 35 mm
  - single-lever mixer hole diameter 44 mm
  - max. flow 8 l/min at 3 bar flow pressure
  - lead-free
  - WRAS 1909073
  - This product can help a building meet the requirements of Green Building Rating Systems, e.g. LEED®, BREEAM®, DGNB
- Operating unit can be positioned freely.

	Chrome	32 800 680-00
	Brushed Platinum	32 800 680-06
	Platinum	32 800 680-08
	Dark Chrome	32 800 680-19
	Brushed Durabronze (23kt Gold)	32 800 680-28
	Brushed Champagne (22kt Gold)	32 800 680-46
	Champagne (22kt Gold)	32 800 680-47
	Brushed Dark Platinum	32 800 680-99

### Recommended miscellaneous

**Strainer waste with control handle - Chrome** 10 711 970-00



### Recommended miscellaneous

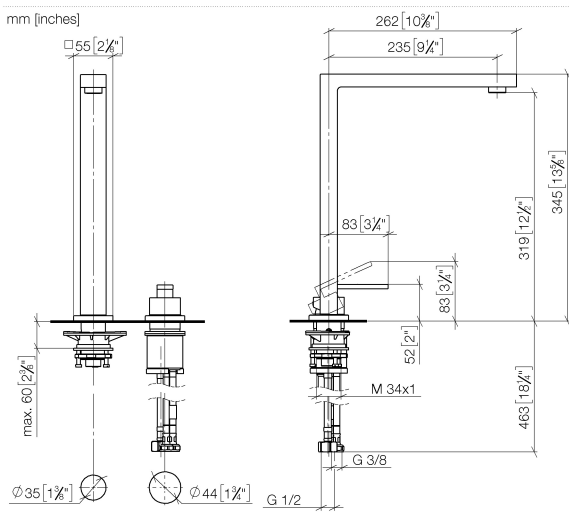
**Dispenser with rosette - Chrome** 82 439 970-00



## LOT Two-hole mixer with individual rosettes - Chrome

LOT

32 800 680



### Flow rate chart



## Codes & Standards

DIN 4109	EN 817	Executive Order no. 1007	ISO 3822
Scottish Water Byelaws	UK Water Supply Regulations	Ü-Zeichen	VA-Zeichen



LOT Two-hole mixer with individual rosettes - Chrome

LOT

32 800 680

Certificates

LGA_18	WRAS_1909	GDV_0400	LGA_18	ETA_18
--------	-----------	----------	--------	--------

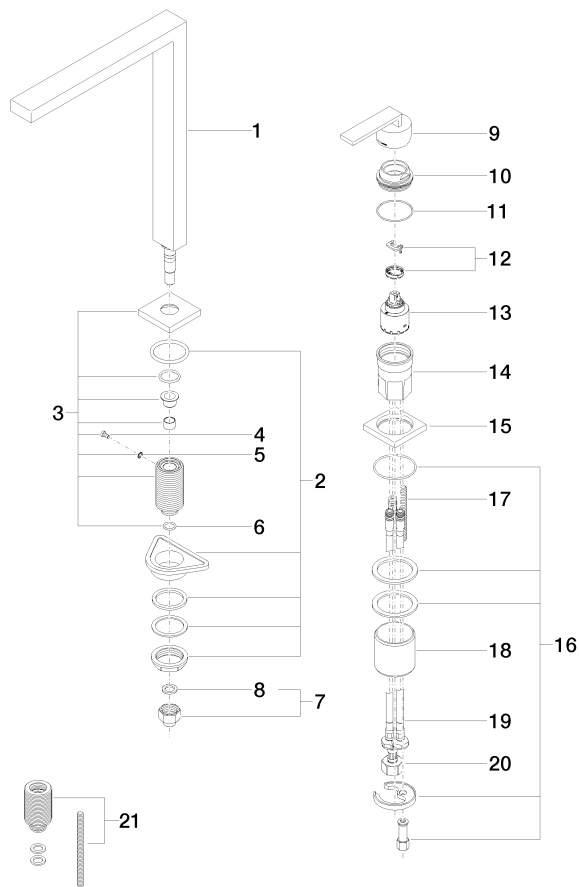
32 800 680

Product version from 5/31/2010 to 3/10/2021

Product version from 3/10/2021 to 5/10/2021

Product version from 5/10/2021

**Product version from 6/1/2022**





## LOT Two-hole mixer with individual rosettes - Chrome

LOT

32 800 680

### Spare parts list

Product version from 5/31/2010 to 3/10/2021

Product version from 3/10/2021 to 5/10/2021

Product version from 5/10/2021

### Product version from 6/1/2022

No.	Item Number	Name	Quantity used	Delivery time
	90 11 06 188 06-00	spout	22	10